

October 2009

Sandan District Data Book 2009

District Code Nr: 606

Kampong Thom Province

Table of Contents

List of Abbreviations	i
Glossary.....	ii
Preface	vi
Introduction	vii
SECTION A: GEOGRAPHY	1
1 Administration and Infrastructure.....	3
2 Land Use and Natural Resources.....	5
3 Geography	7
3.1 Land Area	7
3.2 Distances between Offices	7
SECTION B: DISTRICT PROFILE	9
1 General Information	11
1.1 Population of the District.....	11
1.2 Occupations	12
1.3 Property	14
2 Infrastructure and Economy.....	15
2.1 Roads in meters over 3 years.....	15
2.2 Sewerage Pipes in meters over 3 years.....	16
2.3 Drainage and Bridges	16
2.4 Services in the District	16
2.5 Agriculture.....	17
3 Social Aspects	28
3.1 Education	28
3.2 Health.....	34
3.3 Water and Sanitation	36
3.4 Vulnerable groups.....	40
3.5 Migration	42
4 Natural Resources and Environment (NRE).....	44
4.1 Families involved with NRE issues over 3 years	44
4.2 Percentage of Families involved with Natural Resource issues, by Commune, for 2008	44
4.3 Percentage Houses with access to Garbage collection and Families affected by environmental Pollution, by Commune, for 2008	44
4.4 Percentage Families using chemical Fertilizer and chemical Pesticides, by Commune, for 2008 ..	45
5 Administration and Security	45

5.1	Birth Registration across 3 years.....	45
5.2	Number of unregistered Infants born in 2008, by Commune	45
5.3	Registered criminal Cases over 3 years	45
5.4	Registered criminal Cases per 10,000 people, by Commune, for 2008.....	45
5.5	Number of registered Land Disputes, by Commune, in 2008	46
6	Gender	46
6.1	Registered Domestic Violence over 3 years.....	46
6.2	Percentage of registered cases of Families experiencing domestic Violence, by Commune, in 2008	46
6.3	Women's involvement over 3 years.....	47
6.4	Percentage of Female Participants in Civil Society and of 18-60 year women with uncertain Jobs, by Commune, in 2008	47
6.5	Female-headed Households over 3 years.....	47
6.6	Percentage female-headed Households and with Children of less than 5 years old, by Commune, in 2008	47
7	Indigenous People in the District	48
7.1	Ethnic Minorities in the District over 3 years.....	48
7.2	Other Minorities in the District over 3 years.....	48
	SECTION C: PLANS AND PROJECTS	49
8	Priorities and Plans	51
8.1	Priorities of Commune Councils for 2009 in the District by Sector	51
8.2	Temporary Agreements by Commune, for 2009	56
8.3	Outputs, estimated and actual costs of C/S Fund Projects between 2005 and 2008, by Commune	70
8.4	Total Expenditure on C/S Fund Projects by sector and commune between 2005 and 2008.....	71
8.5	Actual 2009 C/S Fund projects by Commune	72
9	District level Projects from 2006 to 2009	73
9.1	District Initiative Infrastructure Projects from 2006 to 2009	73
9.2	District Initiative Service Projects from 2006 to 2009	73
9.3	Inter Commune Council Projects in 2008 and 2009	74
9.4	Other Projects in 2008 and 2009	74
	SECTION D: SERVICES AND ORGANIZATIONS	77
10	Infrastructure.....	79
10.1	Length of and Expenditure on Roads in 2008, by District	79
10.2	Scale of and Expenditure on Irrigation in 2008, by District.....	79
10.3	Power Supply in 2008, by District	80
11	Health Facilities.....	81

11.1 Health Facilities in the Province, by Operational District.....	81
11.2 Health Facilities and Staff in the province, by Operational District.....	81
11.3 Deliveries in 2007 in the Province, by Operational District.....	83
12 Education	84
12.1 Schools, Classes, Students, Staff, for for all levels, for 2007/2008 by District.....	84
12.2 Characteristics of Schools and School Principals for 2007/2008 by Commune	84
12.3 Enrolment by Level of Education, 2006/2007 by Commune	85
12.4 Enrolment by Level of Education, 2007/2008 by Commune	85
12.5 Aspects of Enrolment for 2007/2008 by Commune.....	86
12.6 School Buildings for all schools in the District for 2007/2008, by Commune	86
12.7 Conditions of Classrooms and Existence of Separate School Office and Library, by Commune	87
12.8 Community Participation and Financing across all schools in the District for 2007/2008 by Commune	87
12.9 Percentage Student Flow Rates and Graduation by level 2006/2007, by Commune	88
13 Staff and Resources at the District	89
13.1 District Councilors elected in 2009	89
13.2 Committees of the Council.....	89
13.3 Board of Governors.....	90
13.4 Offices under Sala Krong, Sala Srok and Sala Khan	90
13.5 Municipality/District/Khan line offices.....	90
13.6 Properties and Equipment of District Administration	91
13.7 Registered Revenue of the District Administration in 2008	92
13.8 Services in the District	92
13.9 Civil Society Organizations active in the District.....	92
13.10 Private Sector Organizations.....	93
SECTION E: POVERTY DATA	95
14 Data on Poverty	97
14.1 Predicted Poverty Rates for 2009, by commune	97
14.2 Poverty data from survey.....	97

List of Abbreviations

#	Number
AGR	Agriculture
BR	Birth Registration
C. Pilot	Piloted Commune
C/S	Commune / Sangkat
CBO	Community-Based Organization
CDB	Commune Database
CDPD	Commune Development and Planning Database
CIP	Commune Investment plan
CLTS	Community Led-Total Sanitation
Comm.	Commune
Com Cov	Commune Covered
CPA	Complementary Package of Activities
CPS	Community Preschool
CCWC	Commune Committees for Women and Children
DANIDA	Danish International Development Agency
DDLG	Democratic Development and Local Governance Project (EC-UNDP)
DFID	Department For International Development (UK)
DIP	District Initiative Project
DIS	District Information System
District PDRD	District Office of Rural Development
District WP	District Work Plan
DIW	District Integration Workshop
DoLA	Department of Local Administration
Dr	Doctor
DWRM	District Office of Water Resource and Meterology
ECD	Early Childhood education (part of PE)
EMIS	Education Management Information System
Event IC	Celebration of International Days
FDH	Former District Hospital
GTZ	German Society for Technical Cooperation (Gesellschaft für Technische Zusammenarbeit GmbH)
Ha	Hectare
HC	Health Center
HC (NB)	Health Center (no building)
HH	Headed Household
HSI	Intervention for Health
HP	Health Post
HW	Hand Washing
ICC	Inter Commune Council
IFAD	International Fund for Agricultural Development
IND	Industry
Inter-commune	Inter-Commune Project Management Committee or Inter-commune project
IO	International Organization
LASED	Land Allocation for Socio-Economic Development
LGCR	Local Governance for Children's Rights
M&E	Monitoring and Evaluation
MA	Medical Assistant
MoEYS	Ministry of Education, Youth and Sports
MoH	Ministry of Health

MoP	Ministry of Planning
MPA	Minimum Package of Activities
MW1	Primary Midwives
MW2	Secondary Midwives
n/a	Not available
NCD	National Contracts Database
NCDD	National Committee for Sub-National Democratic Development
NGO	Non-Governmental Organization
NRML	Natural Resources Management and Livelihood
NU1	Primary Nurse
NU2	Secondary Nurse
OD	Operational District
ODF	Open Defecation Free
Ope. Costs	Operational Costs
Others	Other Staff
PBW	Public Works
PDoEYS	Provincial Department of Education, Youth and Sport
PDRD	Provincial Department of Rural Development
PDWRM	Provincial Department of Water Resource and Meteorology
PE	Parenting Education
PHAST	Participatory Hygiene and Sanitation Transformation
PHD	Provincial Health Department
PID	Project Information Database
PMC	Project Management Committee
Pop 04-05	Population Covered 2004 or 2005
PSDD	Project to Support Democratic Development through Decentralization and Deconcentration
RRD	Rural Road Development
RH	Referral Hospital
RILGP	Rural Investment and Local Governance Project
RPRP	Rural Poverty Reduction Program
RuLIP	Rural Livelihoods Improvement Program
SIDA	Swedish International Development Cooperation Agency
SPPA	Senior Provincial Program Advisor
TBA	Traditional Birth Attendant
UNDP	United Nations Development Project
UNICEF	United Nations Children's Fund
Vil	Village
Vil Cov	Village Covered
VIL-HC	Distance from Village to Health Center
WASH	Water, Sanitation and Hygiene
WRM	Water Resource and Meteorology

Glossary

C/S Fund: The Commune/Sangkat Fund is established and managed by the Government of Cambodia to provide financial support for development projects and administrative costs of Commune/Sangkat Councils. The amount is determined as a percentage of the National Budget (for 2009: 2.8% over the 2008 budget) and is expected to increase gradually over the years. The total 2009 budget under this fund is \$ 27,643,902 (of which \$ 19,272,170 is for Development Projects and \$ 8,371,731 for Administration). Under the Rural Investment and Local Governance Project the World Bank currently reimburses the costs of development projects if these meet the Bank's criteria.

CDB: the Commune Data Base is a national database, compiled by the Ministry of Planning, on the basis of detailed questionnaires, completed at village and commune level, which are then sent to the Departments of Planning for data entry. The most recent round of data collection took place at the end of 2008 (and is reflected in the District Data Books). Commune, District and Provincial Profiles can be generated from this database and should be available from provincial Departments of Planning.

CDPD: the Commune Development and Planning Database is a database maintained by Departments of Planning and Ministry of Planning, recording proposed activities as determined and prioritized by Commune and Sangkat Councils; the Temporary Agreements between these councils and supporting agencies, as decided at District Integration Workshops and details on projects that actually take place at commune, district and provincial levels.

CIP: The Commune Investment Plan is a rolling three-year plan, developed and decided by the Commune or Sangkat Council. It sets priorities and identifies the projects proposed for the years to come.

Commune and Sangkat (C/S): the Communes (in rural areas) and Sangkats (in urban areas) are the lowest and smallest units of local government. Councils are elected directly, once in five years, for the 1417 Communes and 204 Sangkats. In the C/S there are 14,119 villages, which have Village Chiefs, but don't constitute a formal level of local government.

DIP: the District Initiative Project is jointly supported by the MDLF (Multi-Donor Livelihood Facility (supporting the NRM&L Program)) and PSDD. In 2009 it covers 106 districts, 60% of the total in the country, with a budget of \$ 3.2 million. It is focused on capacity development in planning, democratic development, public competitive procurement, financial management and service delivery.

DIS: The District Information System is a national database maintained by NCDD, recording resources, staff, revenue, infrastructure and equipment available in the 193 Districts and Khans throughout the country. The last update took place in July 2009.

District, Municipality and Khan constitutes the third level of Government in Cambodia. There are 159 rural Districts, 26 Municipalities and 8 Khans of Phnom Penh Capital. They all have Councils which were, for the first time, elected in May 2009, by the Commune/Sangkat Councilors. These councils have a mandate for 5 years.

DIW: District Integration Workshops are held between July and October, to bring Commune/Sangkat Councils, looking for support for their projects, together with the governmental and non-governmental agencies that may provide support.

ICC: Inter Communes Council projects are executed in 10 provinces under the Democratic and Decentralized Local Governance Project (DDLG). This five year project (2006-2010) is executed by Ministry of Interior and funded by the European Commission and UNDP. The project focuses on improving dialogue partnership and accountability; create a network of Commune Councils at the provincial and national level and support and contribute to local area development for poverty reduction. The work under the ICC component supports investments and services formulated through inter-commune dialogue and planning.

MEDiCAM: A non-profit and non-partisan membership organization for NGOs active in Cambodia's health sector. It is the primary networking agency for health-related NGOs.

NCDD: the National Committee for sub-National Democratic Development is the inter-ministerial body charged with the implementation of the Organic Law (a key legislative document, adopted in 2008, outlining the envisaged decentralization). NCDD also channels substantial financial assistance by a number of Development Partners, to projects and programs at various levels. This amounted to over \$ 91 million in 2008. More information at: www.ncdd.gov.kh. This website also provides access to reports, manuals, legal documents, details on projects and more.

OD: the Operational Districts are the districts as defined and used by the Ministry of Health. These do not coincide with the 193 (Administrative) Districts and Khans, as used by all other RGC agencies. The Operational Districts are usually larger, and so there are 77 Operational Districts against 193 administrative Districts and Khans. However they do fit within the boundaries of administrative provinces.

PID: The Project Information Database is the database maintained by NCDD at national and sub national level, to follow all aspects of projects by Commune and Sangkat Councils, including the C/S Fund projects

Provincial Investment Fund (PIF)

The Provincial Investment Fund is allocated to all Provinces and Municipalities according to a population based formula. Part of the fund is earmarked for support to planning activities of the Provincial / Municipal Department of Planning; and to gender mainstreaming activities of the Provincial Department of Women's Affairs. The remaining "un-earmarked PIF" is allocated by PRDC to sectoral technical departments against established criteria and in response to proposals with prioritisation taking into account: priorities formulated by the CS Councils and aggregated by District into District Priority Activities Matrices (DPAM); alignment with national planning and poverty alleviation criteria, complementarity with other planned activities; and performance of the Department concerned in implementation of activities in previous years. With this provisional allocation, the Department then programs activities through the District Integration Process. Finally, the agreed activities, plus support costs amounting to no more than 25% of the total, are included in a sub-contract signed between PRDC and the Department, pursuant to the overall PSDD contract signed between NCDD and PRDC. Total budget has been around \$ 2 million per year.

Province: the 23 Provinces and Phnom Penh Capital City represent the 2nd layer of government. They vary in size, from very small, like Kep (approx. 36,000 people) and Pailin (approx. 70,000 people), or large but with small populations, like Mondulkiri (over 60,000 people), and Ratanakiri (over 153,000) to densely populated and large, like Kampong Cham (over 1.7 million people) and Kandal (approx. 1.4 Million people).

PSDD: the Project to Support Democratic Development through Decentralization and Deconcentration is funded by DFID (UK), SIDA (Sweden) and UNDP and runs from 2006 till the end of 2010 (including a one year extension). Annual budgets range from \$ 11 million to over \$ 18 million. The project provides core technical support to NCDD and to the provinces, financial support to the C/S Fund, District Initiative, Provincial Investment Fund and capacity building support through training, studies and advisory services.

RILGP: The Rural Investment and Local Governance Project is a World Bank funded project that provides substantial support to C/S Fund projects and to developing the required infrastructure, policies, systems and skills. It started in 2003 with a Loan for \$ 22 million for 2003-2007 and was then extended with a Grant of \$ 36 million for the period of 2007-2010. Discussions about a possible RILGP 2 are taking place between RGC and the World Bank.

RPRP: the Rural Poverty Reduction Project is a seven year project from 2004 till 2010, funded by IFAD and UNDP and implemented through the Ministry of Agriculture, Forestry and Fishery, supported by the Ministry of Interior and facilitated by NCDD. The project is active in the provinces Prey Veng and Svay Rieng and focuses on 120,600 households below poverty line. The objective is poverty reduction with the active participation of the poor through improved livelihoods, Strengthened capacity, Sustainable farming systems and natural resource management, new and/or rehabilitated infrastructure development, increase accessibly to technology, services and markets for their economic and social development.

RULIP: the Rural Livelihoods Improvement Project is implemented by the Ministry of Agriculture Forestry and Fisheries (MAFF)' Project Support Unit- PSU, with the NCDD playing the role of cooperating agency. Funded by IFAD and UNDP, the project will run till 2014. The target group consists of poor households who have little or even no land, few livestock or other assets and often many dependents. The main goal of the project is to directly or indirectly improve the livelihood systems, food security and incomes of a total of 33,900 rural poor, ethnic minority and female headed households in targeted village of Kratie, Preah Vihear and Ratanakiri provinces in a sustainable manner.

Seth Koma: The UNICEF funded Seth Koma program focuses on measurable action for children and women. During 2006 -2010 it is implemented in six provinces. Government and UNICEF pursue a set of inter-related goals, addressing critical stages of the life cycle of the child: a) Mothers have safe pregnancies and deliveries and healthy newborns; b) best possible start in life of infant; c) Children enter schools at the right age of six years; d) Children are protected from exploitation, abuse, violence, discrimination and other risks; and e) Youth and adolescents acquire life skills, express their views, participate in the decisions.

Preface

The Government of Cambodia attaches great importance to optimal use of scarce resources and to participatory planning and management at all levels. The Organic Law which was adopted in 2008 provides the legal context for further steps towards improving and decentralizing planning, management and monitoring, and towards greater accountability and transparency of institutions at sub-national levels.

The Government has established elected Councils at the sub-national levels, and we will progressively give them the responsibilities, together with the human and financial resources, to deliver a wide range of public services. They will be more democratic, more efficient, more transparent and accountable, better at addressing gender and other inequalities, and at fighting corruption. We recognize that development does not come from government alone; it needs the involvement of citizens, civil society and the private sector, and the new system will facilitate this.

A central element in this process is the availability of information on any aspect of development to all concerned parties. The newly elected Councillors at District and Khan level, line departments operating at these levels, but also NGOs, Development Partners, Commune Councillors and citizens throughout Cambodia need information on problems and requirements, resources and opportunities, services and agencies, plans and projects. They will need such information to better understand the present situation, set targets for the future, monitor progress, know what others are doing and to apply resources wisely and this is the reason the District Data books will be so valuable.

The District Data Books are a major step towards full transparency and towards informed planning and decision-making. They provide all available data at District, Khan, Commune and Sangkat level in easily accessible formats, in Khmer and English, through over 16,000 printed copies, CD-ROMs and the NCDD website.

This is the first time in Cambodia (and possibly in South East Asia) that such detailed information is made so widely available and NCDD should be commended for the hard work that has gone into this. We also thank the Ministry of Planning, which provided the detailed data of the Commune Data Base, the sectoral ministries and provincial authorities who contributed data and the Development Partners who provided financial support.

It is our sincere hope that the publication of the District Data Books will strengthen capacities, especially at district levels, for evidence-based development planning. We also hope that this information will deepen the understanding among Ministries, Provincial Authorities, Development Partners, NGOs and research agencies of the realities at commune and district levels.

We call upon all to use and distribute this information, complement or correct where appropriate and to contribute new data in the years to come.

Sar KHENG

Deputy Prime Minister, Minister of Interior and Chairman of NCDD

Introduction

Purpose

The purpose of the District Data Books is to bring together information on any aspect of life and development of Districts, Khans, Communes and Sangkat, together and make this widely available. The primary targets are the newly elected District Councilors, district level line departments, provincial agencies, Development Partners and NGOs operating at this level. They need detailed knowledge on current living conditions, natural resources, infrastructure, agriculture and other economic activities, current service levels, past and planned projects and available resources.

While much information exists on many of the above aspects, it is often hard to access that information and much is lost to reports, databases and statistics that are not widely shared. Data are often only available in one language and often out-of-date, and many reports cover only one sector or region.

We found that these problems are especially acute at the district level. Now that Districts are becoming a much more significant level of local government and development planning, there is an urgent need for wide-ranging data to be used for setting base-lines, planning and prioritizing, monitoring and learning.

Approach

We have attempted to identify and compile all available statistics, reports, maps and other data at district and/or commune level. From this we have selected information that is available for all or most districts, reasonably reliable and up-to-date, sufficiently detailed and of possible interest to development planners, decision makers, agencies and citizens.

The major sources of the information in these District Data Books are:

- a) The Commune Data Base information over the years 2006 to 2009 (the most recent data were collected late last 2008), as compiled by the Ministry of Planning
- b) Detailed information directly collected from the Ministry of Health, the Ministry of Education, Youth and Sports and (for maps) the Ministry of Land Management, Urban Planning and Construction
- c) The Project Information Database (PID) at NCDD (up-to-date)
- d) The Commune Development and Planning Database (CDPD) (up to date)
- e) The District Information System (DIS) (updated per Mid 2009)
- f) Direct data collection at provincial and district level on private sector, irrigation, roads, and electricity, through provincial agencies
- g) Medical data collected from MEDiCAM
- h) The ID Poor Project – for poverty data on a number of provinces and districts
- i) NCDD's work on predictive poverty rates
- j) Specific projects for outputs, plans and budgets (Seth Koma, RILGP, RPRP and ICC)

Limitations of the data

We are fully aware that the data we collected are not always complete, consistent or correct. While we have rejected information that was wrong or very incomplete, we decided not to aim for statistical and scientific perfection, but to include information that is useful, relevant

and comprehensive. We also accepted different sources for the same data as this may encourage discussion on the quality of the respective data.

We strongly encourage anyone who notes errors or incompleteness in these data to contact us and to share their data. We hope that the next round of producing such District Data Books can draw on wider sources and more complete data.

We encourage the District Administrations, who receive these data also in digital format, not only to use these for their planning and monitoring, but also to start correcting and updating these data and to share new data with NCDD for future use.

Contents

The information in the following pages is organized in five sections:

- a) **Geographical data:** this section provides maps on infrastructure and administration and on land use and natural resources management. These maps are also provided in large format to all Districts and Khans.
- b) **District Profile:** this presents wide ranging data, covering 2006 – 2009, at district and commune level, extracted from the Commune Data Base, but edited for better understanding.
- c) **Plans and Projects:** this section presents development priorities determined by Commune and Sangkat Councils, Temporary Agreements, outputs and expenditure of major projects at Commune and District level over 2006 – 2008 and plans and budgets for 2009.
- d) **Services and Organizations:** this section provides details on key infrastructure (roads, electricity, irrigation systems) and services in health and education at district and commune level. It also provides an inventory of resources at the District Administration, NGOs operating in the district and private sector agencies active in the district.
- e) **Poverty Data:** this section provides predicted poverty rates for 2009 for all districts and communes and detailed poverty data compiled and processed by the ID Poor project for those that have been covered by this project.

The future

It is our hope that this is the start of a longer-term process. We hope that a next edition of these District Data Books will offer more comprehensive, correct and up-to-date information. We hope that the District Administrations will not only start using this information, but also improve and update it. For this they are all provided with the full data set in digital format.

We invite agencies, projects and experts to send reports, statistics and maps that could be used for a next version to us and we invite all users of the District Data Books to inform us about errors, updates and inconsistencies. Please contact us through info@ncdd.gov.kh

We now invite you to browse through this data book. You may open this randomly or use the table of contents and go to the aspects that have your special interest.

We hope that you will be informed, surprised and assisted. We hope, above all, that this information will lead to a deeper understanding of causes and effects of poverty, to purposeful decisions on how to tackle those causes and to greater transparency in using scarce resources for the benefit of all.

Martin de Graaf
Program Advisor, PSDD/NCD

SECTION A: GEOGRAPHY

1 Administration and Infrastructure

Please see separate folder containing A3 maps.

2 Land Use and Natural Resources

Please see separate folder containing A3 maps.

3 Geography

3.1 Land Area

Total Land Area (ha)	Forest Land Area (ha)		Cultivation Land Area (ha)	Construction Land Area (ha)	Other Land Area (ha)
	Total	Flooded Forest Area			
312400	280192	0	9230	1232	21746

3.2 Distances between Offices

Location	Distance (Km)
From District Office to C/S Office of Chheu Teal	0
From District Office to C/S Office of Dang Kambet	0
From District Office to C/S Office of Klaeng	0
From District Office to C/S Office of Mean Rith	0
From District Office to C/S Office of Mean Chey	0
From District Office to C/S Office of Ngan	0
From District Office to C/S Office of Sandan	0
From District Office to C/S Office of Sochet	0
From District Office to C/S Office of Tum Ring	0

SECTION B: DISTRICT PROFILE¹

¹ All data in this section come from the Commune Database (CDB) unless otherwise specified. These include primarily new CDB data, collected late 2008, and some data from earlier years. Please note that percentages are rounded to the nearest whole number.

1 General Information

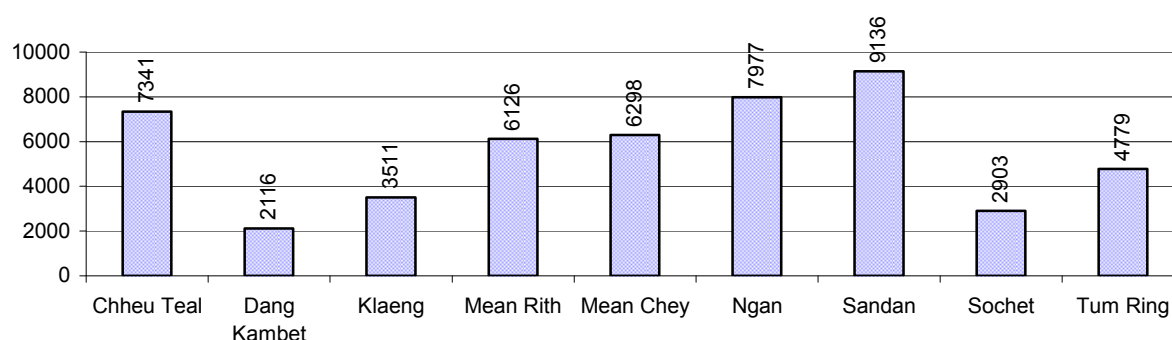
1.1 Population of the District

1.1.1 Total Population

Number of families	2005	2006	2007	2008
Total number of families	9,055 families	9,203 families	9,809 families	10,395 families
Increase (+)/Decrease (-) in nr of families		2%	7%	6%
Total population	43,458 pers	43,742 pers	47,112 pers	50,187 pers
Increase (+)/Decrease (-) in nr of people		1%	8%	7%
Number of female Headed Households (HH)	1,103 families	1,044 families	1,337 families	1,191 families

Note: Percentages of population and increase/decrease are calculated on basis of the previous year. A negative sign in front of the percentage indicates a decrease in population.

1.1.2 Population, by Commune, in 2008



1.1.3 Population, by Age Group, over 3 years

Population by age group	2006	2007	2008	
	%	%	%	Number
Age 0-5 years (as percentage of the population)	15%	15%	15%	7,625 persons
Male 0-5 yrs	49%	48%	49%	3,749 persons
Female 0-5 yrs	51%	52%	51%	3,876 persons
Age 6-17 (as percentage of the population)	29%	30%	30%	15,093 persons
Male 6-17 yrs	51%	50%	50%	7,566 persons
Female 6-17 yrs	49%	50%	50%	7,527 persons
Age 18-60 (as percentage of the population)	50%	50%	49%	24,791 persons
Male 18-60 yrs	47%	48%	48%	11,917 persons
Female 18-60 yrs	53%	52%	52%	12,874 persons
Age 61 above (as percentage of the population)	5%	5%	5%	2,678 persons
Male 61	46%	46%	45%	1,197 persons
Female 61	54%	54%	55%	1,481 persons

Note: The overall percentage for each age group is calculated on the basis of the total population. The gender distribution of each group is calculated on the basis of the population within that particular age group.

1.2 Occupations

1.2.1 Percentage of families with a particular Occupation over 3 years

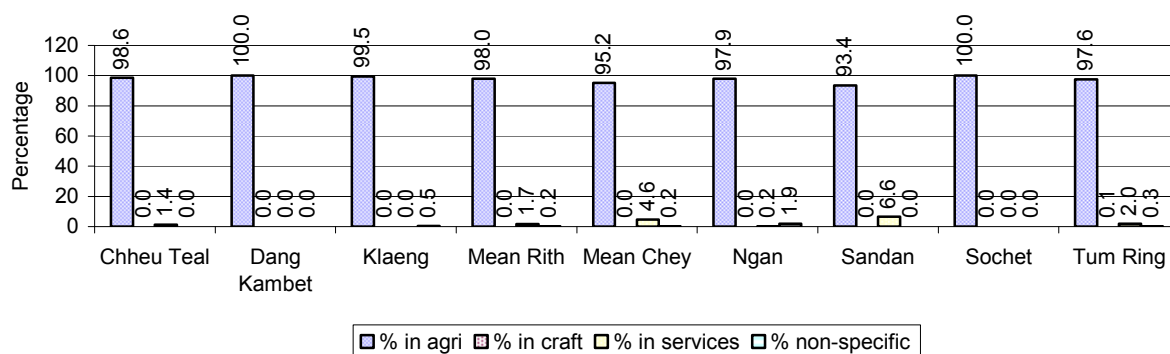
This table shows the percentage of the population who have a particular occupation (job), for example the percentage of the population in the district who are rice farmers, furniture crafter, trader, etc.

Description	2006	2007	2008	
	%	%	%	Number
Families whose main occupation is agriculture	98%	96%	97%	10,098 Families
Families whose primary occupation is rice farming	97%	93%	91%	9,504 Families
Families whose primary occupation is cultivating long-term crops	0%	1%	1%	52 Families
Families whose primary occupation is cultivating short-term crops	1%	2%	5%	504 Families
Families whose primary occupation is cultivating vegetable	0%	0%	0%	3 Families
Families whose primary occupation is fisherman	0%	0%	0%	3 Families
Families whose primary occupation is livestock farmer	0%	0%	0%	0 Families
Families whose primary occupation is NTFP collection	0%	0%	0%	32 Families
Families whose main occupation is craft work	0%	0%	0%	1 Families
Families, whose main occupation is in furniture craft, wooden, rattan, vine, bamboo	0%	0%	0%	1 Families
Families whose main occupation is in metal, aluminum, glass goods production	0%	0%	0%	0 Families
Families whose main occupation is food production	0%	0%	0%	0 Families
Families whose main occupation is tire, plastics and rubber goods production	0%	0%	0%	0 Families
Families whose main occupation is textile, clothing goods production	0%	0%	0%	0 Families
Families whose main occupation is in other production, not listed above	0%	0%	0%	0 Families
Families whose main occupation is services	1%	3%	2%	252 Families
Families whose main occupation is trade	1%	2%	2%	165 Families
Families whose main occupation is repair	0%	0%	0%	32 Families
Families whose main occupation is providing transport services	0%	0%	0%	20 Families
Families whose main occupation is providing other services	0%	1%	0%	35 Families
Families whose main occupation is not clear (or multi)	0%	0%	0%	44 Families

Note: The occupation percentages are calculated on the basis of the total number of families.

1.2.2 Percentage Families that work in one of four occupational sectors, by Commune in 2008

This table indicates the percentage of families involved in one of four occupation types: agriculture, craft, services or non-specific (other). Please note agriculture includes forestry activities such as cutting down trees and gathering gum from the trees.



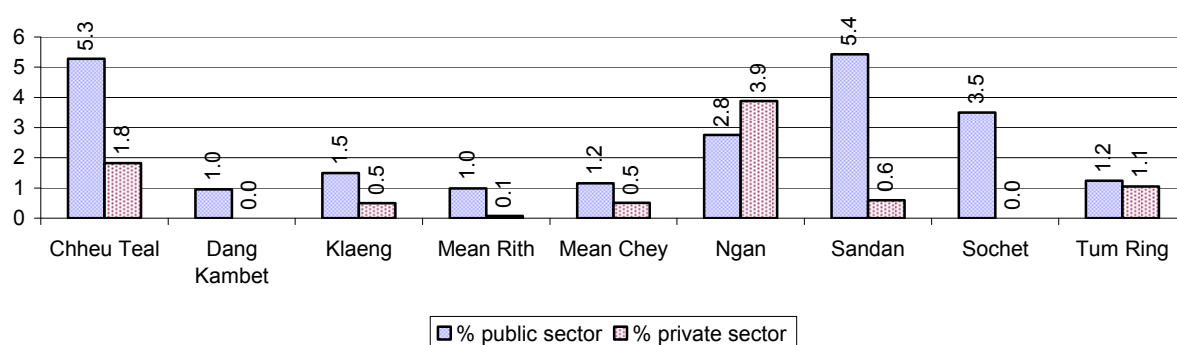
Note: Calculated on the basis of the total number of families within a commune.

1.2.3 Percentage of Families with public Sector, private Sector or uncertain Jobs, over 3 years

Description	2006	2007	2008	
	%	%	%	Number
Families that have a family member who is a government official, staff or worker	4%	4%	3%	298 families
Families that have a family member who is a private sector staff or worker	3%	2%	1%	123 families
Number of people aged 18-60 with uncertain/irregular jobs	4%	2%	3%	825 persons

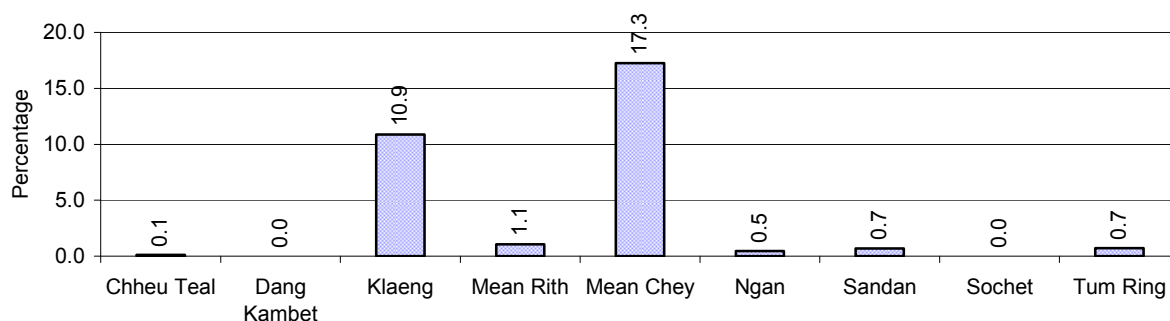
Note: In the first two rows percentages are calculated on the basis of the total number of families. In the third row the percentage is calculated on the basis of the total number of people aged 18-60 years.

1.2.4 Percentage of Families with public or private Sector Jobs, by Commune in 2008



Note: Calculated on the basis of the total number of families in the commune

1.2.5 Percentage of People aged 18-60 years with uncertain/irregular Jobs, by Commune, in 2008.



1.3 Property

1.3.1 Housing types and facilities over 3 years

This table shows the percentage of people living in a certain type of house. It also indicates how many houses have electricity or battery powered lights and how many have TV.

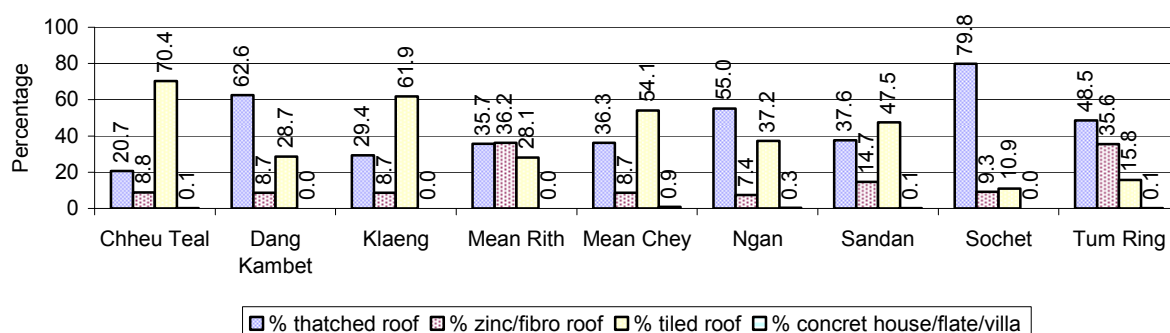
House Type	2006	2007	2008	
	%	%	%	Number
House with thatched roof	46 %	44 %	41 %	3,855 houses
House with zinc/fibro roof	9 %	11 %	16 %	1,475 houses
House with tiled roof	44 %	44 %	43 %	4,042 houses
Flats/apartments (with many families living)	0 %	0 %	0 %	5 houses
Concrete house or flat (with one family living)	0 %	0 %	0 %	17 houses
Villa house	0 %	0 %	0 %	0 houses
Houses with electricity	3 %	5 %	5 %	509 houses
Houses with battery light	30 %	35 %	39 %	3,654 houses
Houses with TV	16 %	20 %	21 %	1,979 houses

Note: Calculated against the total number of houses

1.3.2 Families living on public Land or without a permanent House

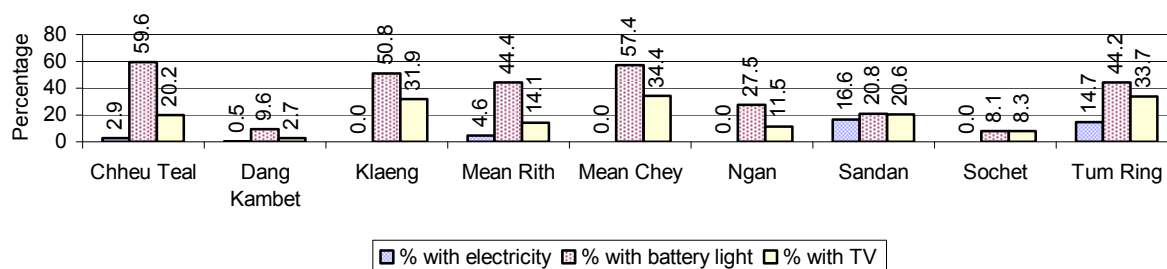
Living situation	2006	2007	2008
Families living in a house on public land	177 families	40 families	3 families
People, without permanent housing	31 person(s)	14 person(s)	11 person(s)

1.3.3 Percentage of Population living in a particular type of House, by Commune, in 2008



Note: Calculated against the total number of houses in each commune

1.3.4 Percentage of Houses with Electricity, Battery Lights and/or TVs, by Commune, in 2008



Note: Calculated against the total number of houses in each commune

1.3.5 Types of Vehicles and their ratio to Families across 3 years

This table shows the number of families per vehicle in the district. The last column shows the total number of each type of vehicle in the district for 2008.

Description	2006 ratio	2007 ratio	2008	
			Ratio	Number
Bicycle and bicycle with trailer	2	2	2	5,744
Ox-carts and horse-carts	2	3	3	3,830
Motorbike/with trailer	5	4	3	3,219
Motor tri-cycle	9,203	N/A	10,395	1
Large Transportation				
Total number of cars/trucks	137	104	95	109
Locally made vehicles	657	409	347	30
Trucks for goods transport	236	272	254	41
Buses/mini buses for passengers	1,150	545	611	17
Family cars	1,534	613	495	21
Agriculture machinery				
Tractors used for plowing	837	817	495	21
Power-tillage used for plowing	142	108	70	148
Other type of machinery				
Other type of machinery	N/A	N/A	2,599	4
Water transportation				
Row boats	9	10	10	1,055
Total number of motor boats	263	363	335	31
Motor boats used for fishing	4,602	2,452	2,599	4
Motor boats used for passengers	3,068	N/A	2,599	4
Motor boats used for goods transporting	307	426	452	23

Note: Ratio of families to a particular type of vehicle is the result of the total number of families divided by total number of that type of vehicle. Other types of vehicles, such as bulldozer, excavator, rollers etc. are not listed.

2 Infrastructure and Economy

2.1 Roads in meters over 3 years

Description	2006	2007	2008
Bituminous road	0 m	0 m	0 m
DBST, Macadam road	0 m	0 m	0 m
Concrete road	0 m	0 m	0 m
Laterite road	85,773 m	76,479 m	275,702 m
Constructed earth road	31,813 m	30,219 m	31,626 m
Un-constructed earth road	43,660 m	42,040 m	34,350 m

2.2 Sewerage Pipes in meters over 3 years

Description	Sewerage pipe length		
	2006	2007	2008
Total length of sewerage pipe, diameter 30-50 cm	96 m	72 m	72 m
Length of newly constructed sewerage pipe, diameter 30-50 cm	0 m	0 m	1 m
Length of sewerage pipe, diameter 30-50 cm needs repair/rehabilitation	24 m	24 m	0 m
Total length of sewerage pipe, diameter of pipe 60-100 cm	16 m	10 m	80 m
Length of newly constructed sewerage pipe, diameter 60-100 cm	0 m	190 m	12 m
Length of sewerage pipe, diameter 60-100 cm needs repair/rehabilitation	0 m	0 m	10 m
Sewerage pipe, diameter of pipe over 100 cm	45 m	14 m	12 m
Length of newly constructed sewerage pipe, diameter over 100 cm	45 m	11 m	8 m
Length of sewerage pipe, diameter over 100 cm needs repair/rehabilitation	0 m	0 m	11 m

2.3 Drainage and Bridges

Construction Type	2006		2007		2008	
	place(s)	Length	place(s)	Length	place(s)	Length
Single pipe culvert	51	276m	71	415 m	66	383 m
Double-pipe culvert	5	18m	6	35 m	9	49 m
Box pipe culvert	3	8m	16	120m	16	120 m
Wooden bridge	29	255m	12	142m	7	59 m
Concrete bridge	7	60m	2	48m	2	48 m
Bale bridge	0	0m	0	0m	0	0 m
Spillway construction	4	28m	0	0m	3	2,100 m

2.4 Services in the District

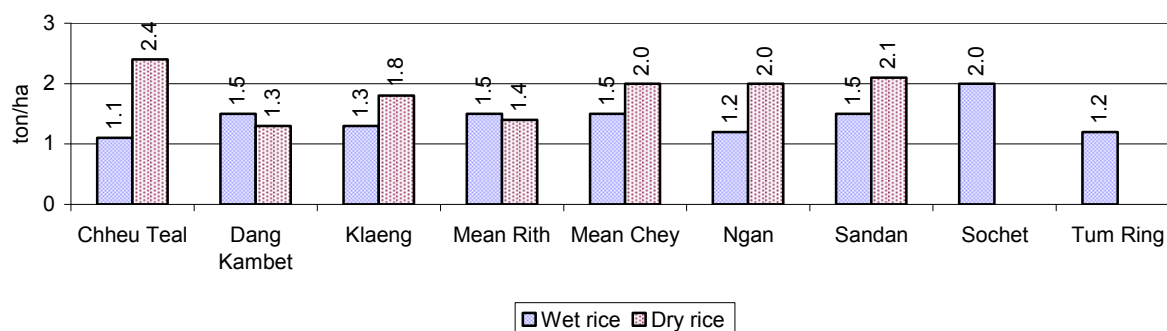
Descriptions	Number of places by year		
	2006	2007	2008
Public			
Electricity generating stations	12	6	3
Health clinics	0	0	0
Private			
Bicycle and motorcycle repair places	45	58	57
Agricultural machinery, tools and equipment repair places	1	2	3
Electronic tool repair places	4	5	9
Battery-charging services	45	32	33
Handicraft places, wooden furniture and forest by-products	7	9	10
Other handicraft places (excluding furniture)	3	4	0
Small-scale services (hairstylist, phone service, massage, Karaoke, etc)	31	25	32
Small-scale food shop businesses (Food, groceries, drink shop, etc)	6	8	12
Small-scale rice mills	485	585	590
Medium or large-scale rice mills	100	1	1
Small-scale markets	1	2	3
Large-scale market	1	0	0
Alcohol refinery places	36	7	41
Pharmacies and small drug stores	4	0	0
Hotels	0	0	0
Guest houses	0	0	1
Restaurants	0	0	0
Gasoline stations	0	0	0

2.5 Agriculture

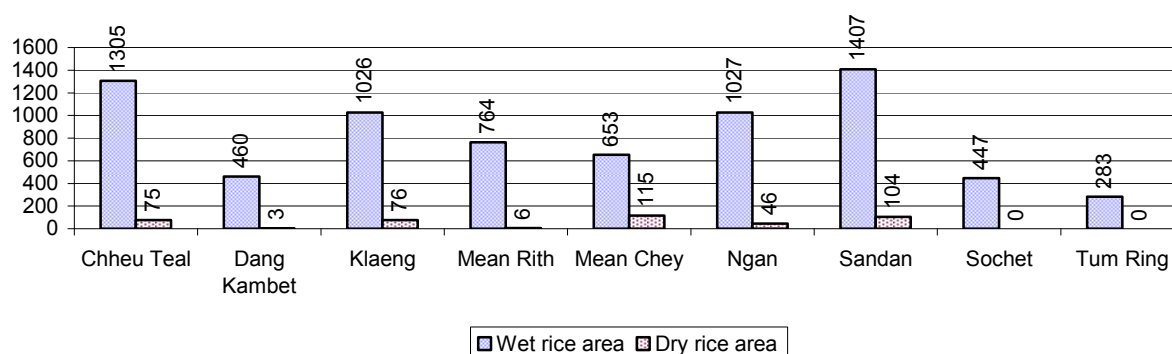
2.5.1 Rice cultivation in the District over 3 years

Description	2006	2007	2008
Total dry rice land area	353 ha	578 ha	496 ha
Actual dry rice cultivation area	290 ha	375 ha	425 ha
% actual cultivation to total land	82%	65%	86%
Total dry rice production	497 tonne(s)	705 tonne(s)	789 tonne(s)
Average dry rice yield	1.7 tonne(s)/ha	1.9 tonne(s)/ha	1.9 tonne(s)/ha
Total wet rice land area	7,291 ha	7,207 ha	7,966 ha
Actual wet rice cultivation area	7,208 ha	5,932 ha	7,371 ha
% actual cultivation to total land	99 %	82%	93%
Total wet rice production	12,914.39 tonne(s)	8,816.24 tonne(s)	10,483.70 tonne(s)
Average wet rice yield	1.8 tonne(s)/ha	1.5 tonne(s)/ha	1.4 tonne(s)/ha
Total intensive rice land area	236 ha	32 ha	53 ha
Actual intensive rice cultivation area	- ha	47 ha	95 ha
Average intensive rice yield	- tonne(s)/ha	1.3 tonne(s)/ha	2.1 tonne(s)/ha
Actual upland rice cultivation area	1,921 ha	2,263 ha	2,039 ha
Total upland rice production	3,511 tonne(s)	3,103 tonne(s)	2,383 tonne(s)
Average upland rice yield	1.8 tonne(s)/ha	1.4 tonne(s)/ha	1.2 tonne(s)/ha

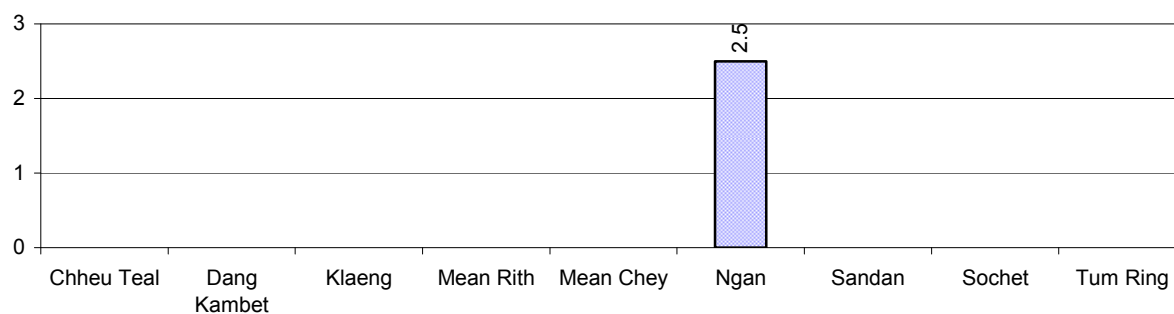
2.5.2 Estimated wet and dry Season Rice Yield in tonne(s)/Ha, by Commune, in 2008



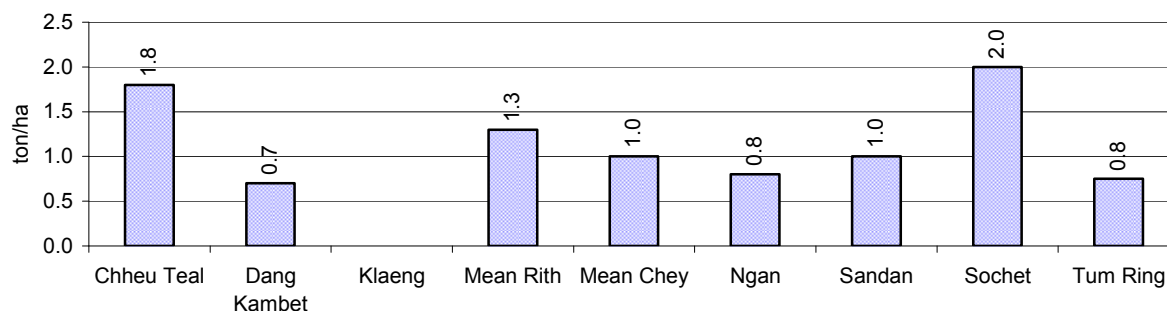
2.5.3 Cultivated wet and dry Season Rice areas in Ha, by Commune, in 2008



2.5.4 Estimated intensive Rice Yields in tonnes/Ha, by Commune, for 2008



2.5.5 Estimated upland Rice Yield in tonnes/Ha, by Commune, for 2008

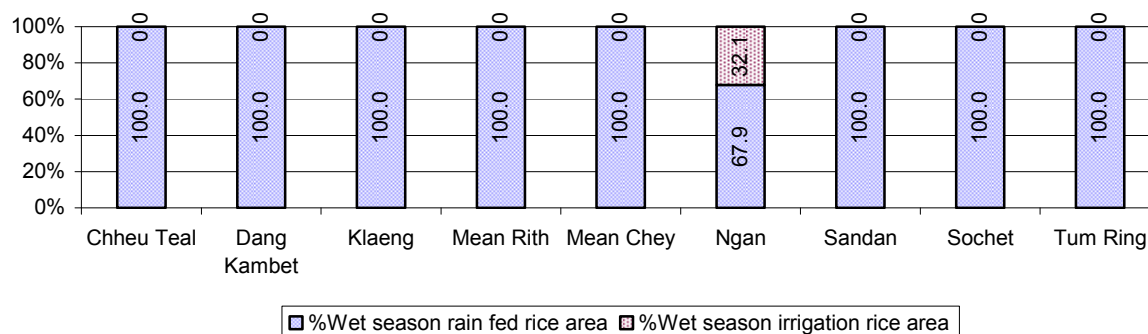


2.5.6 Wet season Rice irrigation across 3 years

Description		2006 %	2007 %	2008	
				%	Number
Total area of wet season rain fed rice land		90%	93%	96 %	7,041 ha
Percentage of wet season rice land that is irrigated; and for 2008 area in Ha		10 %	7 %	4 %	330 ha
Where	Area irrigated from canal/dam	100 %	98 %	100 %	330 ha
	Area irrigated from river, stream, lake, natural pond	0 %	2 %	0 %	0 ha
	Area irrigated from drilled well	0 %	0 %	0 %	0 ha
	Area irrigated from dug pond	0 %	0 %	0 %	0 ha

2.5.7 Water sources for wet Season Rice Cultivation, by Commune, in 2008

This chart shows the percentage of wet season rice cultivation receiving water from rain (natural) and from irrigation.



2.5.8 Access to Irrigation

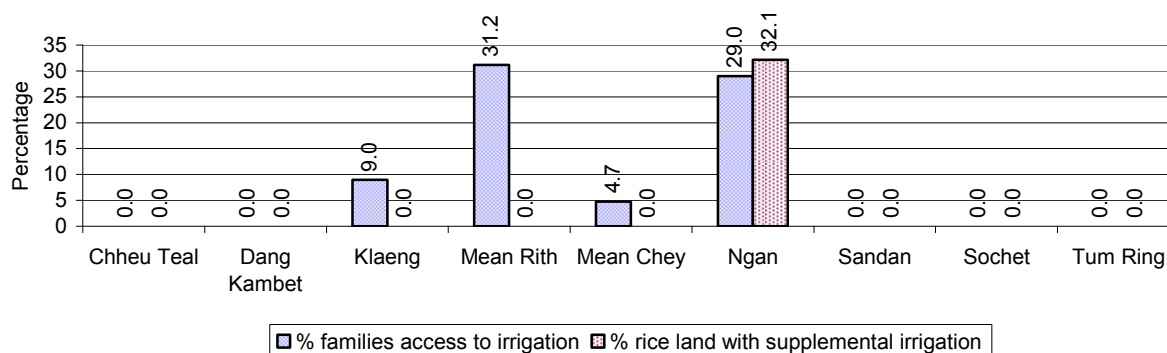
Description	2006 %	2007 %	2008	
			%	Number
Families who have access to irrigation water	10%	11%	9%	846 families
Families who have irrigation wells	0%	0%	0%	12 families

Note: Calculated against the total number of families are rice farmers

2.5.9 Number of Irrigation Wells over 3 years

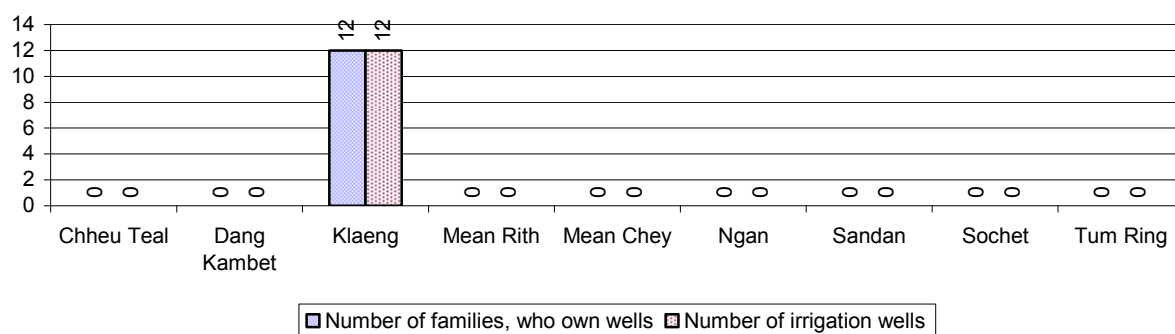
Description	2006	2007	2008
Number of irrigation wells	18 wells	17 wells	12 wells

2.5.10 Percentage of Families with access to (supplemental) Irrigation for wet Season Rice cultivation, by Commune, in 2008



Note: % of families, with access to irrigation is calculated against the total number of families, whose main occupation is rice farming. Irrigated wet rice land area is calculated against the total actual wet rice land cultivated areas

2.5.11 Irrigation Wells, by Commune, in 2008

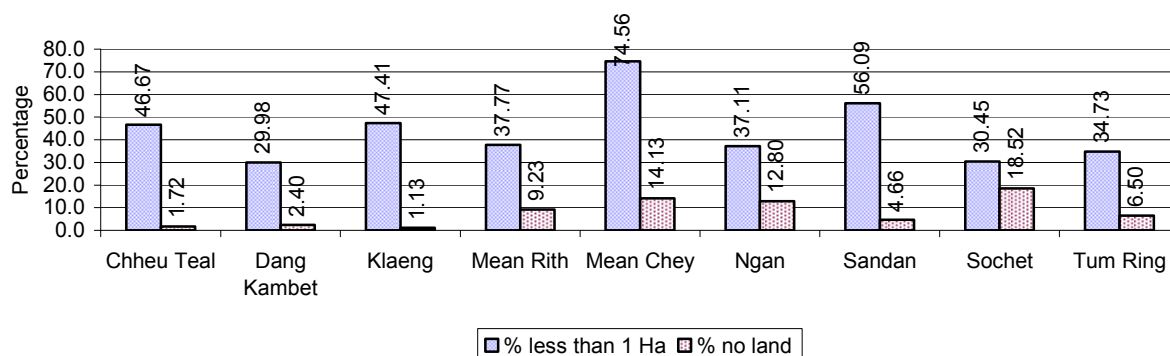


2.5.12 Farmers owning less than one hectare of Rice Land

Description	2006	2007	2008	
	%	%	%	Number
Families who have less than one hectare of rice land	38%	44%	47%	4,490 families
Families who do not own any rice land	12%	8%	8%	736 families

Note: Calculated on basis of total number of families who are rice farming

2.5.13 Percentage of Farmers with less than one Hectare or no Rice Land, by Commune, in 2008

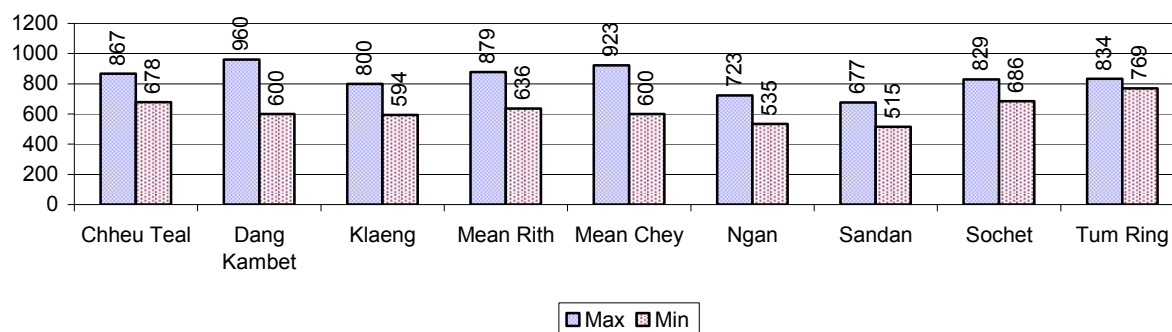


Note: Calculated on basis of total number of families who are rice farming

2.5.14 Average farm-gate Prices of Rice, over 3 years

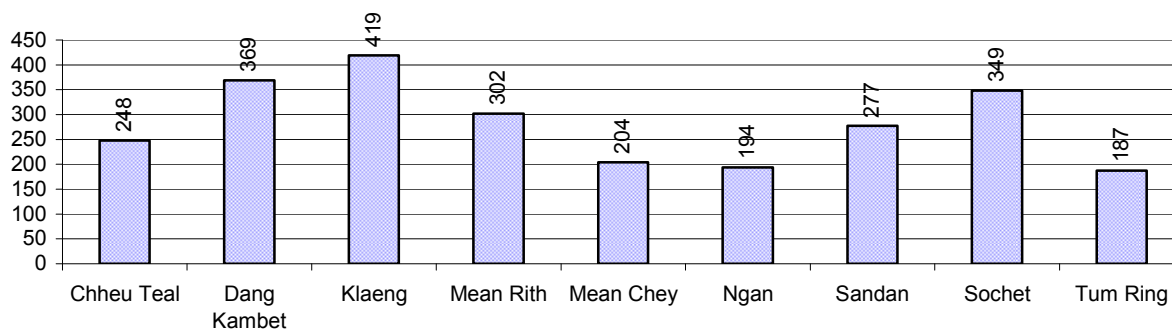
Description	2006	2007	2008
Maximum average farm gate price	527 Riels/Kg	781 Riels/Kg	832 Riels/Kg
Minimum average farm gate price	399 Riels/Kg	620 Riels/Kg	624 Riels/Kg
Average farm gate price	463 Riels/Kg	700 Riels/Kg	728 Riels/Kg
Average rice production per person	396 Kg/person	269 Kg/person	274 Kg/person

2.5.15 Minimum and maximum farm-gate Prices of Rice in Riel/kg, by Commune, in 2008



2.5.16 Production of Paddy in Kgs/Person, by Commune, in 2008

This table shows how much paddy (harvested rice) is produced in a year in a commune, in kgs per person.

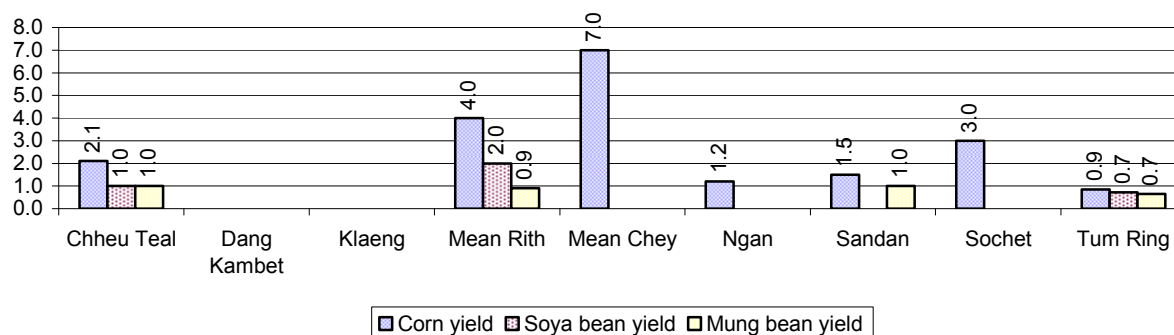


2.5.17 Production of other Crops, over 3 years

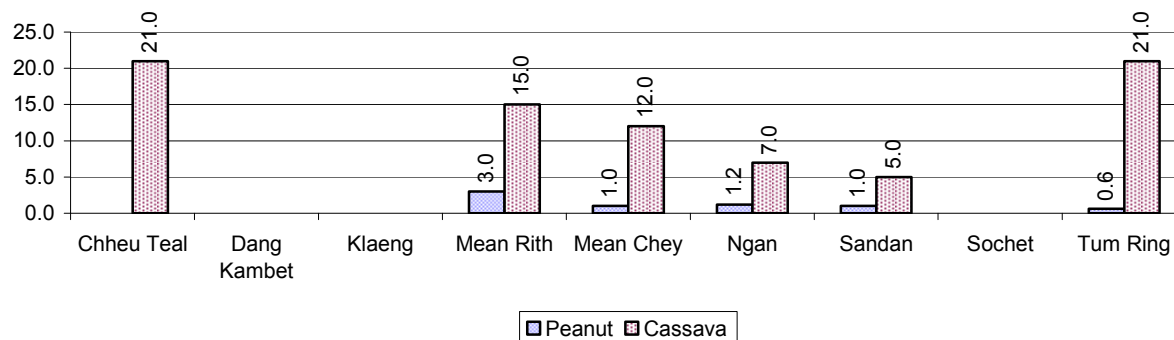
Crops	2006	2007	2008
Corn cultivation area	157 ha	192 ha	123 ha
Estimated corn yield	3.3 tonne(s)/ha	2.1 tonne(s)/ha	2.8 tonne(s)/ha
Estimated corn production	514 tonne(s)	413 tonne(s)	345 tonne(s)
Soya bean cultivation area	1,058 ha	1,043 ha	2,356 ha
Estimated Soya bean yield	1.6 tonne(s)/ha	1.6 tonne(s)/ha	1.2 tonne(s)/ha
Estimated Soya bean production	1,706 tonne(s)	1,630 tonne(s)	2,921 tonne(s)
Mungbean cultivation area	150 ha	117 ha	148 ha
Estimated Mungbean yield	2.0 tonne(s)/ha	0.9 tonne(s)/ha	0.9 tonne(s)/ha
Estimated Mungbean production	304 tonne(s)	104 tonne(s)	131 tonne(s)
Peanut cultivation area	176 ha	127 ha	27 ha
Estimated Peanut yield	2.1 tonne(s)/ha	0.7 tonne(s)/ha	1.4 tonne(s)/ha
Estimated Peanut production	375 tonne(s)	92 tonne(s)	37 tonne(s)
Cassava cultivation area	126 ha	486 ha	3,487 ha
Estimated Cassava yield	10.3 tonne(s)/ha	9.9 tonne(s)/ha	13.5 tonne(s)/ha
Estimated Cassava production	1,299 tonne(s)	4,791 tonne(s)	47,068 tonne(s)
Sweet potatoes cultivation area	48 ha	33 ha	21 ha

Crops	2006	2007	2008
Estimated Sweet potatoes yield	4.0 tonne(s)/ha	3.9 tonne(s)/ha	2.7 tonne(s)/ha
Estimated Sweet potatoes production	193 tonne(s)	128 tonne(s)	57 tonne(s)
Sesame cultivation area	436 ha	56 ha	34 ha
Estimated Sesame yield	1.7 tonne(s)/ha	0.8 tonne(s)/ha	0.7 tonne(s)/ha
Estimated Sesame production	758 tonne(s)	45 tonne(s)	23 tonne(s)

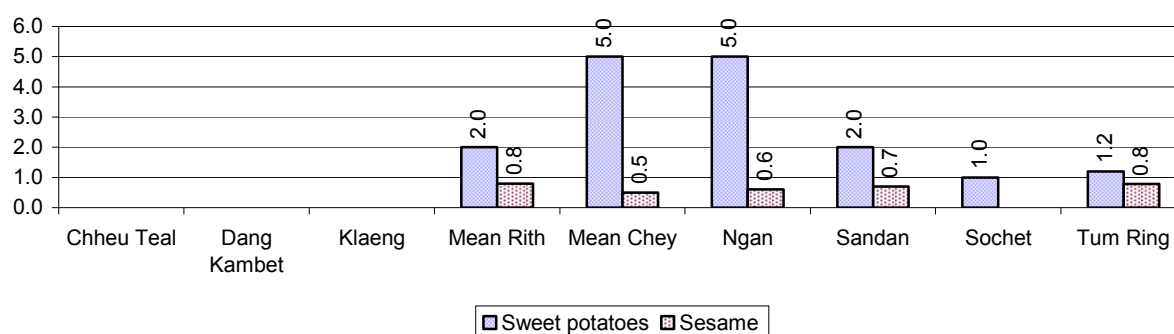
2.5.18 Yields of Corn, Soya beans and Mungbeans in tonne(s)/ha, by Commune, in 2008



2.5.19 Yields of Peanuts and Cassava in tonne(s)/ha by Commune, in 2008



2.5.20 Yields of Sweet Potatoes and Sesame in tonne(s)/ha, by Commune, in 2008



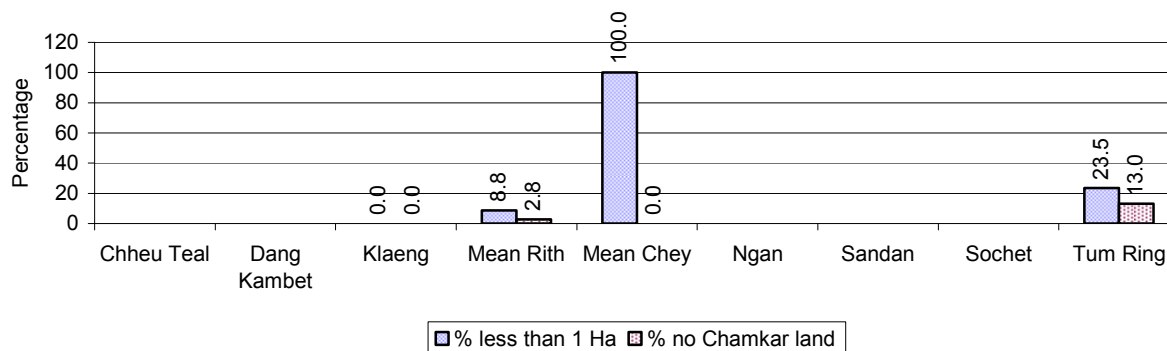
2.5.21 Percentage Farmers who own less than 1 Ha or no Chamkar land

Description	2006 %	2007 %	2008	
			%	Number
Families, who own less than 1ha of Chamkar land	37%	8%	13%	70 families
Families, with no Chamkar land	20%	2%	5%	27 families

Note 1: Calculated as a percentage of the total number of families whose main occupation is Chamkar (not rice) farming

Note 2: Chamkar land is no-rice land, i.e. other crops

2.5.22 Percentage Farmers owning less than 1 ha or no Chamkar land, by Commune, in 2008



Note: Percentage is calculated among families, who Chamkar farm as a main occupation, not the total population of the commune.

2.5.23 Percentage of Families raising Cattle/Buffalo, over 3 years

Description	2006 %	2007 %	2008	
			%	Number
Families raising cattle/buffalo	81%	81%	78%	8,145 families
Families raising cattle/buffalo as labor forces	72%	74%	71%	7,345 families

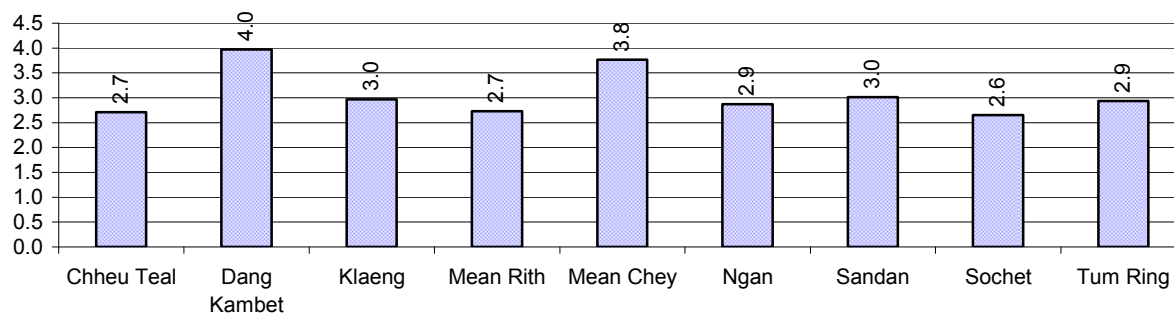
Note: Calculated against the total number of families.

2.5.24 Number of Cattle/buffalo being raised, over 3 years

Description	2006	2007	2008
Total number of cattle/buffalo	24,161 head(s)	24,152 head(s)	24,678 head(s)
Average cattle/buffalo per families	3.2 head(s)/families	3.0 head(s)/families	3 head(s)/families

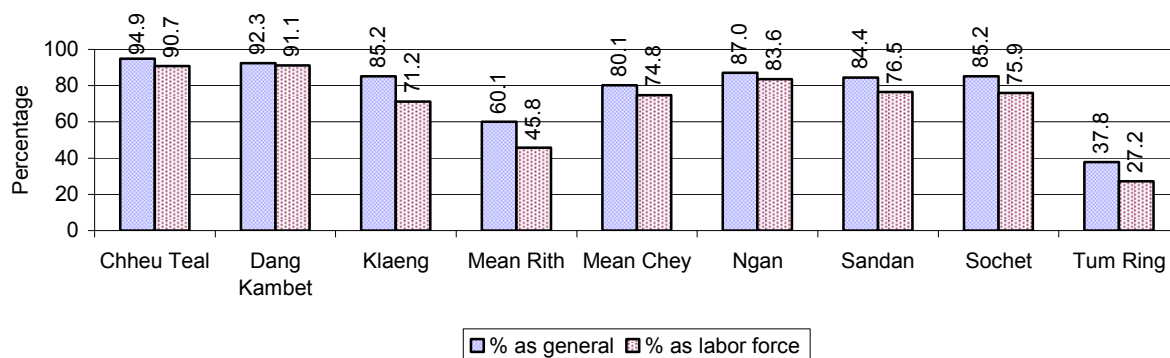
Note: Calculated by dividing total number of cattle/buffalo by total number of cattle/buffalo raising families

2.5.25 Average number of Cattle/Buffalo per Family, by Commune, in 2008



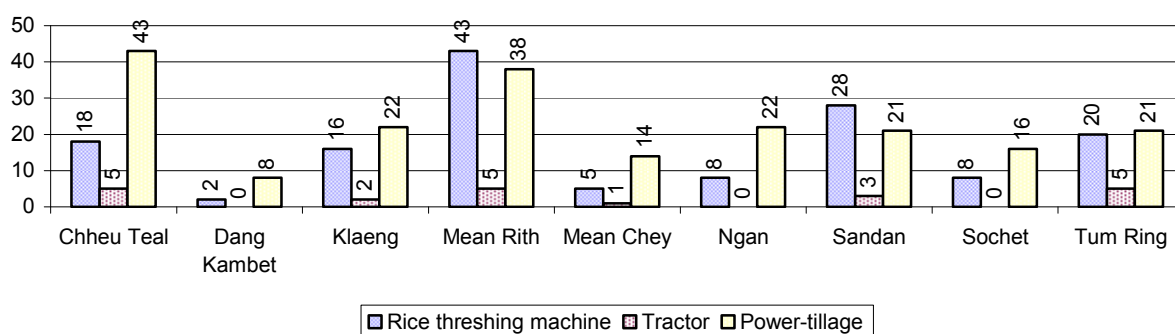
Note: Calculated by dividing total number of cattle/buffalo by total number of cattle/buffalo raising families

2.5.26 Percentage Families raising Cattle/Buffalo, for general and labor purposes in 2008, by Commune



Note: Calculated using the total number of families raising cattle/buffalo against the total number of families.

2.5.27 Type and number of agricultural Machines, by Commune, in 2008

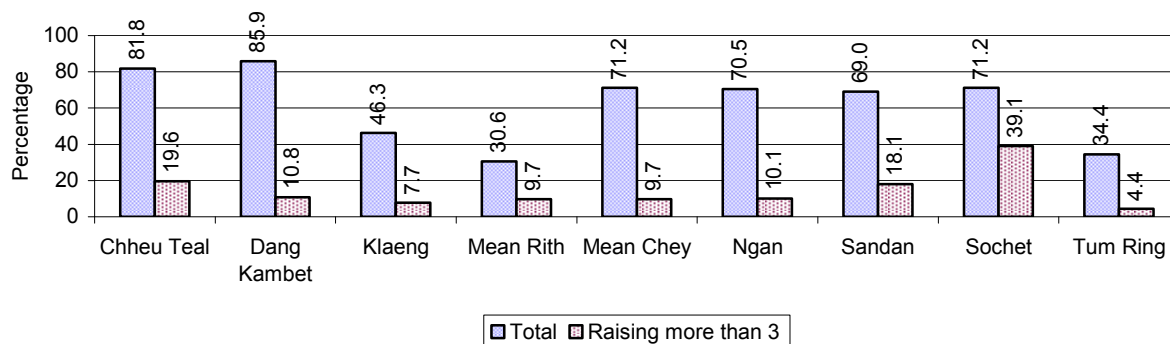


2.5.28 Livestock-producing Households over 3 years

Description	2006 %	2007 %	2008	
			%	Number
Total number of families raising pigs	68%	63%	62%	6,443 families
number of families raising more than 3 pigs	12%	13%	13%	1,392 families
Total number of families raising chickens	90%	90%	90%	9,338 families
number of families raising more than 3 chickens	72%	75%	75%	7,786 families
Total number of families raising ducks	4%	4%	5%	558 families
number of families raising more than 5 ducks	3%	3%	3%	341 families
Total number of families raising goats or sheep	0%	0%	0%	1 families
Total number of families raising horses	0%	0%	0%	1 families

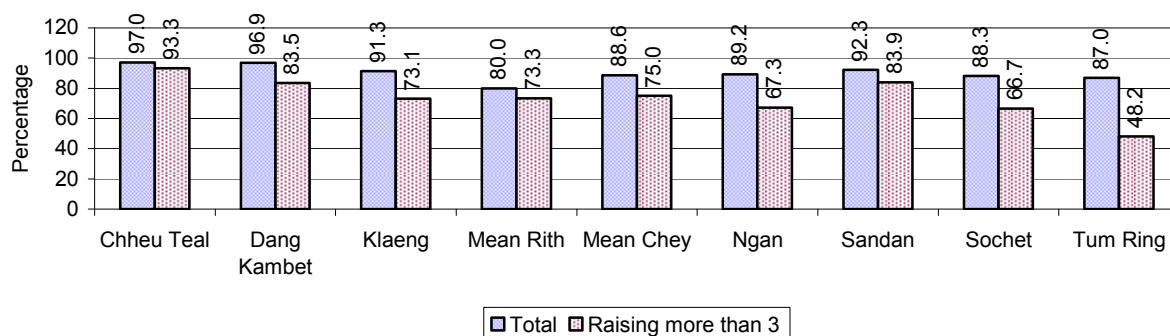
Note: Calculated against the total number of families

2.5.29 Percentage Families raising Pigs, by Commune, in 2008



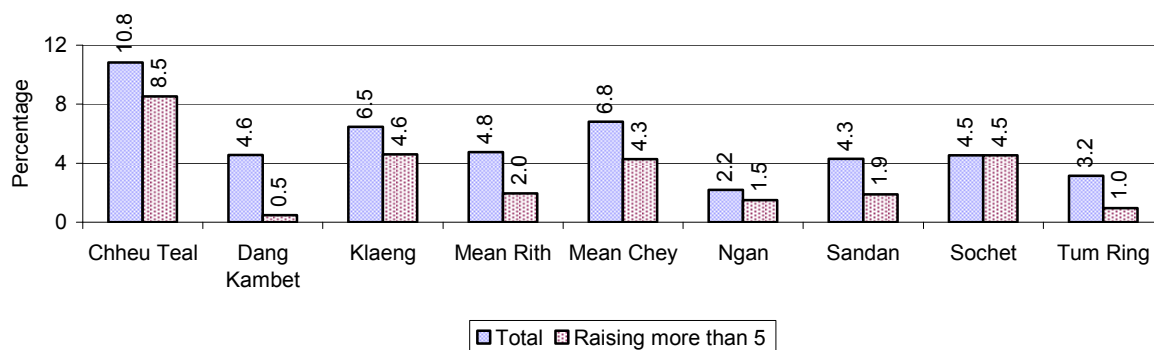
Note: Calculated against the total number of families in the commune

2.5.30 Percentage Families raising Chickens, by Commune, in 2008



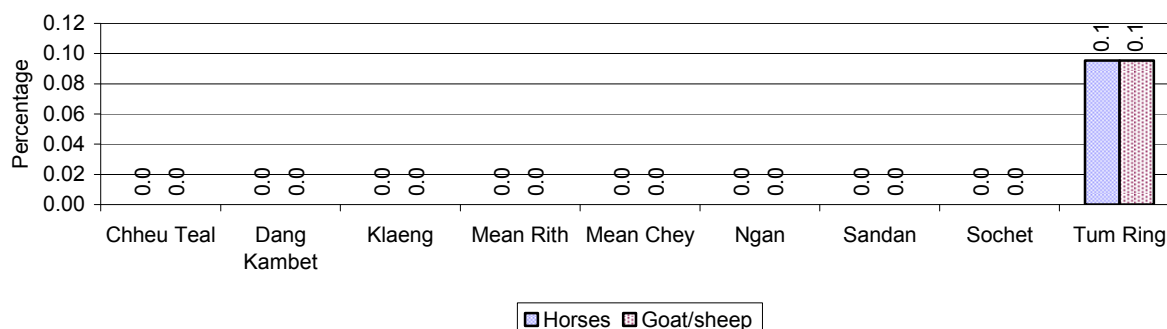
Note: Calculated against the total number of families in the commune

2.5.31 Percentage Families raising Ducks, by Commune, in 2008



Note: Calculated against the total number of families in the commune

2.5.32 Percentage Families raising Horses, Goats or Sheep, by Commune, in 2008



Note: Calculated against the total number of families in the commune

2.5.33 Livestock Farms over 3 years

Description	2006	2007	2008
Number of cattle/buffalo farms	0 farm(s)	0 farm(s)	0 farm(s)
Number of pig farms	6 farm(s)	0 farm(s)	0 farm(s)
Number of goat/sheep farms	0 farm(s)	0 farm(s)	0 farm(s)
Number of chicken farms	0 farm(s)	0 farm(s)	0 farm(s)
Number of duck farms	0 farm(s)	0 farm(s)	0 farm(s)

2.5.34 Number Livestock Farms, by Commune in 2008

There were no farms of this type in this District in 2008

Note: Number of farms are recorded by the village chief, not by counting number of livestock in each farm

2.5.35 Number Chicken and Duck Farms, by Commune, for 2008

There were no farms of this type in this District in 2008

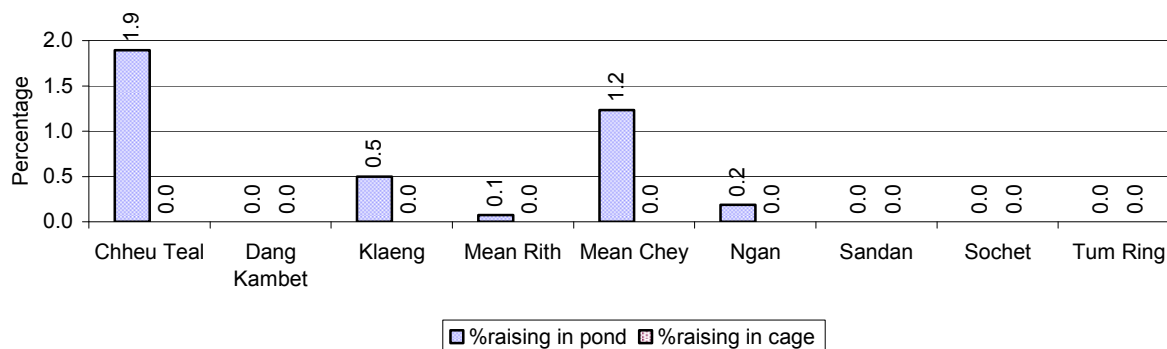
Note: Number of farm places recorded by village chief, not by counting number of livestock in each farm

2.5.36 Families raising Fish over 3 years

Description	2006	2007	2008
Total number of families raising fish	82 families	60 families	53 families
% families raising fish	1%	1%	1%
Number families raising fish in pond	82 families	60 families	53 families
% families raising fish in pond	1%	1 %	1%
Number fish pond	79 pond(s)	56 pond(s)	52 pond(s)
No. of ponds per family	1.0 pond/families	0.9 pond/families	1.0 pond/families
Number of families raising fish in cage	0 families	0 families	0 families
%families raising fish in cage	0 %	0 %	0%
Number of fish cage	0 cage(s)	0 cage(s)	0 cage(s)
No. of fish cage per family	- cage /families	- cage /families	- cage /families

Note: % of families raising fish or fish in ponds or cages is calculated a percentage of the total number of families.

2.5.37 Percentage of Families raising Fish, by Commune, in 2008



Note: Calculated as a percentage of the total number of families in the commune.

2.5.38 Shrimp and Prawn Farming over 3 years

Description	2006	2007	2008
Number of families raising shrimps	0 families	0 families	0 families
% Families raising shrimps	0%	0%	0%
Number of shrimp ponds	0 pond	0 pond	0 pond
Total area raising shrimps	0 ha	0 ha	0 ha
Area per family	-ha/families	-ha/families	-ha/families
Number of families raising prawns	0 families	0 families	0 families
% families raising prawns	0%	0%	0%
Number prawn ponds	0 pond	0 pond	0 pond
Ponds per families	- pond/families	-pond/families	-pond/families
Number of prawn cages	0 cage	0 cage	0 cage
Cages per families	0 cage /families	0 cage /families	0 cage /families

Note: Percentage of families raising either prawns or shrimp is calculated against the number of families, who do aquaculture farming, NOT the total population.

2.5.39 Numbers of Families raising Shrimps and number of Shrimp Ponds, by Commune, in 2008

There were none of these in this District in 2008

2.5.40 Number of Families raising Prawn and Number of Prawn Ponds/Cages, by Commune, in 2008

There were none of these in this District in 2008

3 Social Aspects

3.1 Education

3.1.1 Kindergarten in the District over 3 years

Description	2006	2007	2008
Number of community kindergarten schools	0 school(s)	12 school(s)	9 school(s)
Number of community kindergarten class rooms	0 room(s)	9 room(s)	6 room(s)
Number of community kindergarten classes	0 class(es)	12 class(es)	9 class(es)
Number of community kindergarten teachers	0 person(s)	12 person(s)	9 person(s)
Number of women community kindergarten teachers	0 women	12 women	8 women
Number of state and private kindergarten schools	5 school(s)	5 school(s)	6 school(s)
Number of state and private kindergarten class rooms	7 room(s)	7 room(s)	14 room(s)
Number of state and private kindergarten classes	8 class(es)	8 class(es)	9 class(es)
Number of state and private kindergarten teachers	8 person(s)	9 person(s)	9 person(s)
Number of women state and private kindergarten teachers	7 women	8 women	8 women

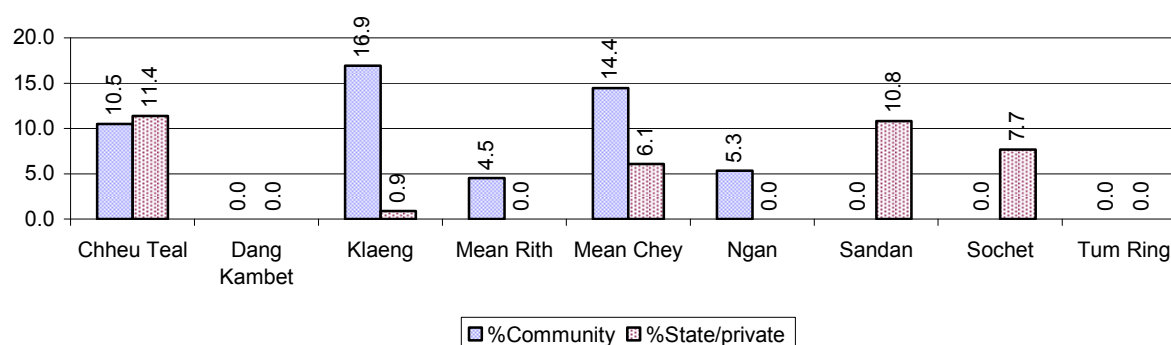
3.1.2 Percentage enrolment at Kindergarten level over 3 years

This table shows the percentage of the total 3-5 year old population attending kindergarten.

Description	2006 %	2007 %	2008	
			%	Number
Total percentage of children, 3-5 yrs, go to kindergarten	8%	16%	11%	501 person(s)
Percentage of children, 3-5 yrs, go community kindergarten	3%	10%	6%	270 person(s)
Percentage children, 3-5 yrs, go state/private kindergarten	5%	5%	5%	231 person(s)

Note: Calculated against the total for that age group

3.1.3 Percentage of Children 3-5 yrs attending Kindergarten, by Commune, in 2008



3.1.4 Basic Education over 3 years

Primary School

Description	2006	2007	2008
Number of primary schools	47 school(s)	49 school(s)	48 school(s)
Number of primary school rooms	174 room(s)	197 room(s)	177 room(s)
Number of primary classes	247 class(es)	248 class(es)	264 class(es)

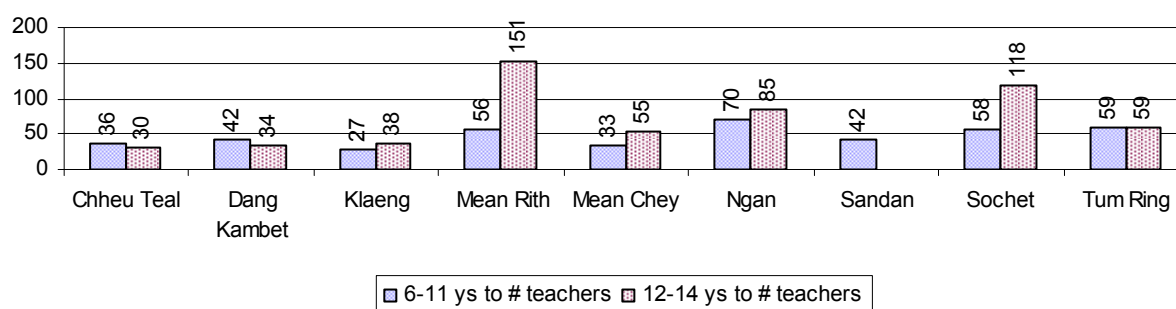
Description	2006	2007	2008
Number of primary teachers	179 person(s)	167 person(s)	167 person(s)
Ratio of children 6-11 yrs to school	139	141	156
Ratio of children 6-11 yrs to school room	38	35	42
Ratio of children 6-11 yrs to class	26	28	28
Ratio of children 6-11 yrs to teacher	36	42	45

Note: According to education norm, children 6-11 yrs should attend primary school, while 12-14 yrs should be in lower secondary school, but in reality this varies.

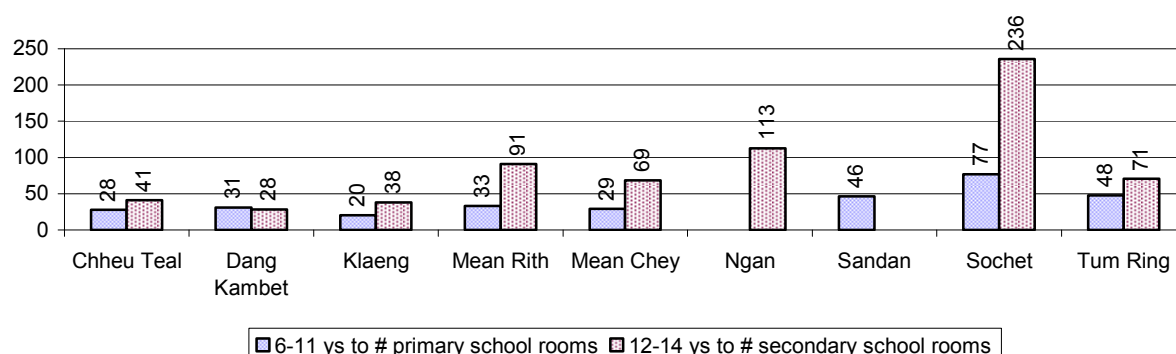
Lower Secondary School

Description	2006	2007	2008
Number of lower secondary schools	6 school(s)	6 school(s)	8 school(s)
Number of lower secondary school rooms	27 room(s)	44 room(s)	48 room(s)
Number of lower secondary classes	25 class(es)	28 class(es)	32 class(es)
Number of lower secondary teachers	30 person(s)	40 person(s)	55 person(s)
Ratio children 12-14 yrs to school	545	608	468
Ratio of children 12-14 yrs to school room	121	83	78
Ratio of children 12-14 yrs to class	131	130	117
Ratio of children 12-14 yrs to teacher	109	91	68

3.1.5 Ratio of 6-11 year old and 12-14 year old Children to number of Teachers, by Commune, in 2008



3.1.6 Ratio of 6-11 year old and 12-14 year old Children to number of School Rooms, by Commune, in 2008



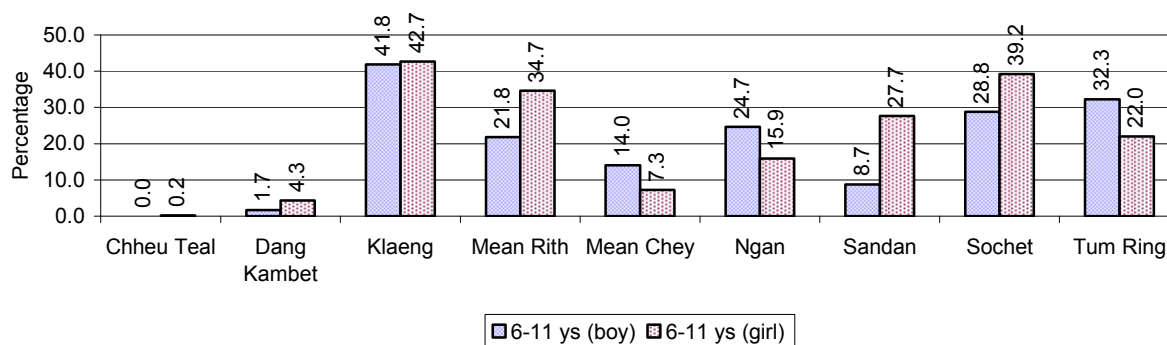
3.1.7 Enrolment status at Primary Level over 3 years

Description	2006 %	2007 %	2008	
			%	Number
Total children aged 6-11 years old	15%	15%	15%	7,479 person(s)
Total children aged 6-11 who are in school	84%	83%	81%	6,067 person(s)
Total children aged 6-11 who are not in school	16%	17%	19%	1,412 person(s)
Total girls aged 6-11 years old	14%	14%	14%	3,723 person(s)
Total girls aged 6-11 who are in school	83%	84%	80%	2,971 person(s)
Total girls aged 6-11 who are not in school	17%	16%	20%	752 person(s)
Total boys aged 6-11 years old	16%	15%	15%	3,756 person(s)
Total boys aged 6-11 who are in school	86%	82%	82%	3,096 person(s)
Total boys aged 6-11 who are not in school	14%	18%	18%	660 person(s)

Note 1: Percentage is calculated on the basis of the total number of children within 6-11 year age group for the first 3 rows and for the total girls and the total boys aged 6-11 yrs.

Note 2: Number of girls aged 6-11 who are in & not in school is calculated against the total number of girls aged 6-11 yrs. Number boys, 6-11 yrs who are in & not in school are calculated against the total number of boys aged 6-11 yrs.

3.1.8 Percentage of 6-11 year old Children not in School, by Commune, in 2008



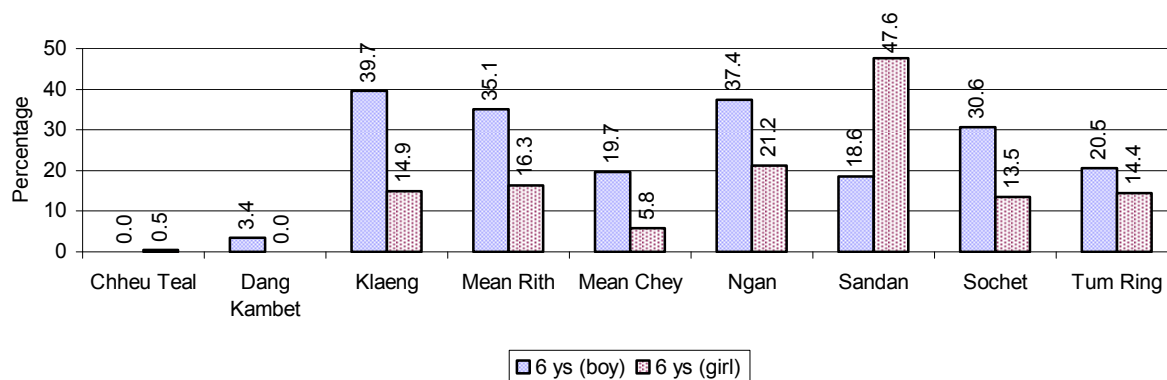
Note: calculated on the basis of the total number of children within 6-11 year age group in the commune.

3.1.9 Enrolment of 6 year old Children over 3 years

Description	2006 %	2007 %	2008	
			%	Number
Total % and number of children aged 6 years old	4%	4%	4%	2,064 person(s)
Total % of children aged 6 years old in school	82%	82%	76%	1,559 person(s)
Total % of children aged 6 years old not in school	18%	18%	24%	505 person(s)

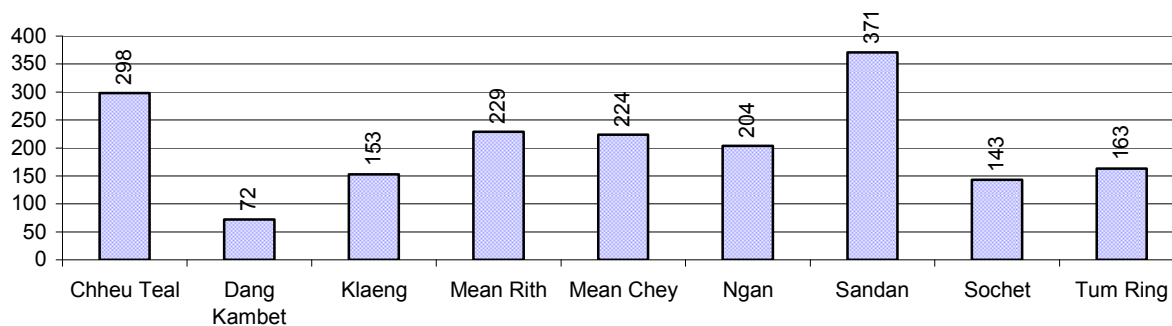
Note: First row calculated as a percentage of total population. Second and third row calculated as a percentage of the total number of 6 year olds.

3.1.10 Percentage of 6 year old Children not in School, by Commune, in 2008



Note: Calculated as a percentage of total 6 year old population

3.1.11 Number of 5 year old Children in each Commune in 2008

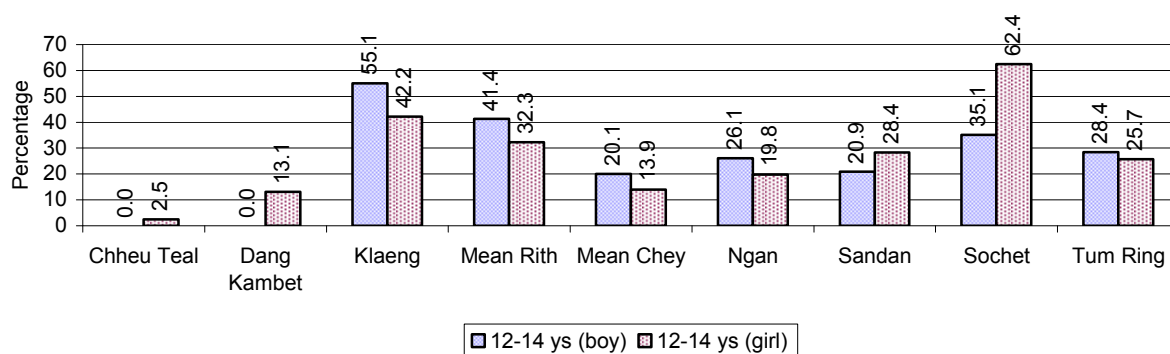


3.1.12 Enrolment at Lower Secondary Level over 3 years

Description	2006 %	2007 %	2008	
			%	Number
Total children aged 12-14 years old	7%	8%	7%	3,747 person(s)
Children aged 12-14 years old in school	83%	80%	76%	2,836 person(s)
Children aged 12-14 years old not in school	17%	20%	24%	911 person(s)
Total girls aged 12-14 years old	7%	7%	7%	1,867 person(s)
Girls aged 12-14 years old in school	84%	79%	76%	1,421 person(s)
Girls aged 12-14 years old not in school	16%	21%	24%	446 person(s)
Total boys aged 12-14 years old	8%	8%	8%	1,880 person(s)
Boys aged 12-14 years old in school	82%	81%	75%	1,415 person(s)
Boys aged 12-14 years old not in school	18%	19%	25%	465 person(s)

Note: Percentage is calculated on the basis of number of the total number of children within 12-14 yrs group, except for the first row of each section which is calculated on the basis of the total population.

3.1.13 Percentage of 12-14 year olds not in School, by Commune, in 2008



Note: Calculated as a percentage of the total 12-14 year old population in each commune

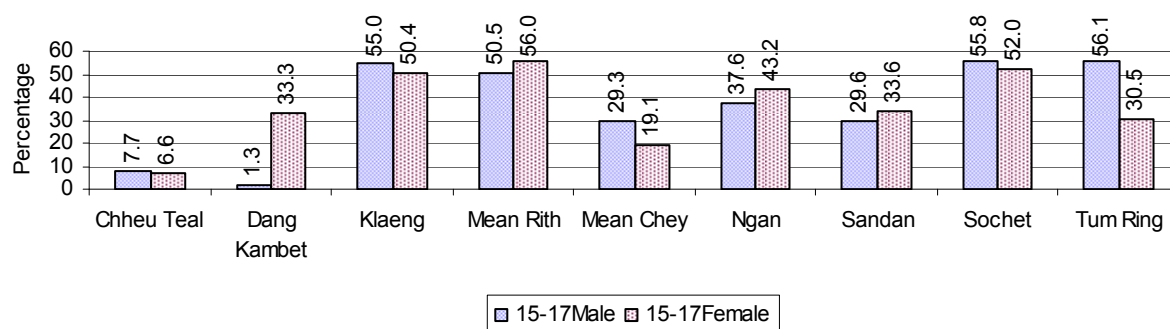
3.1.14 Upper Secondary Schools over 3 years

Description	2006	2007	2008
Number of upper secondary schools	1 school(s)	1 school(s)	1 school(s)
Number of upper secondary school rooms	16 room(s)	34 room(s)	34 room(s)
Number of upper secondary classes	16 class(es)	15 class(es)	17 class(es)
Number of upper secondary teachers	24 person(s)	17 person(s)	35 person(s)
Ratio of 15-17 yr olds to number of school	3,101	3,553	3,867
Ratio of 15-17 yr olds to number of school room	194	105	114
Ratio of 15-17 yr olds to number of classes	194	237	227
Ratio of 15-17 yr olds to number of teacher	129	209	110

3.1.15 Enrolment of 15-17 year old teenagers over 3 years

Description	2006	2007	2008
Number of teenage, 15-17 years old	3,101 person(s)	3,553 person(s)	3,867 person(s)
Number of teenage, 15-17 years old, who are not studying	923 person(s)	1,213 person(s)	1,325 person(s)
Percentage of teenage, 15-17 years old not studying	30%	34%	34%

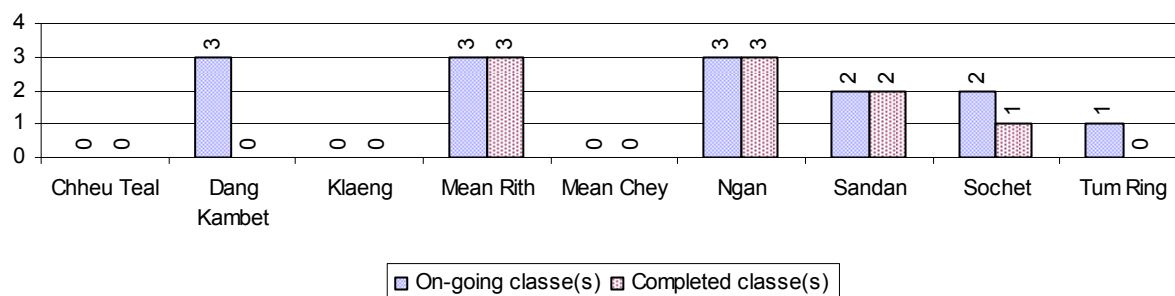
3.1.16 Percentage of 15-17 year old Teenagers not at School, by Commune, in 2008



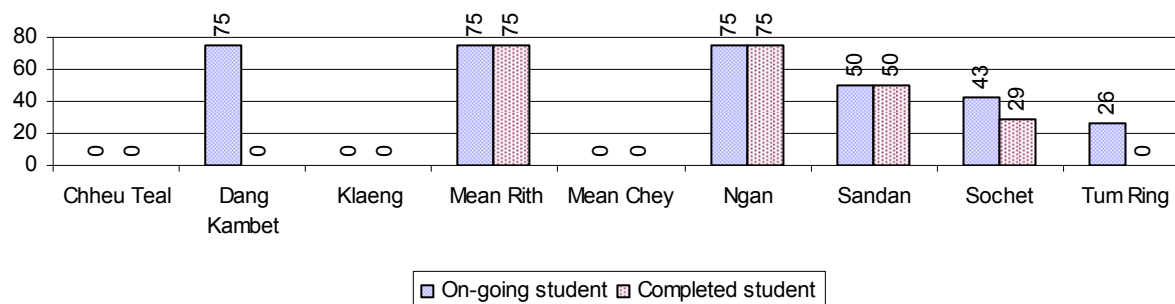
3.1.17 Literacy Classes as of 2008

Literacy classes	Organized by:		Other Program(s)	Total
	PDoEYS	NGOs		
Number of On-going literacy classes	14 class(es)	0 class(es)	0 class(es)	14 class(e(s)
Number of literacy students in on-going classes	344 person(s)	0 person(s)	0 person(s)	344 person(s)
Completed literacy class(es)	9 classes	0 classes	0 classes	9 classes
Number of literacy students that have completed literacy classes	229 person(s)	0 person(s)	0 person(s)	229 person(s)
Number of students that passed	189 person(s)	0 person(s)	0 person(s)	189 person(s)

3.1.18 Number of on-going and completed Literacy Classes, by Commune, in 2008



3.1.19 Students of on-going & completed Literacy Classes, by Commune, in 2008

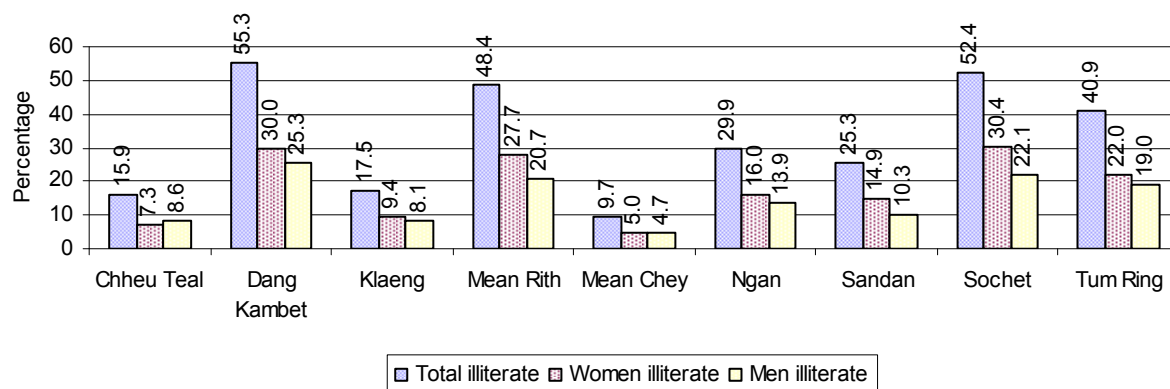


3.1.20 Percentage of illiterate People between 15-60, over 3 years

Illiteracy Status	2006 %	2007 %	2008	
			%	Number
Illiterate people, 15-60 years old	32%	33%	29%	8,352 person(s)
Illiterate females, 15-60 years old	17%	18%	16%	4,594 person(s)
Illiterate people, 15-17 years old	18%	20%	15%	565 person(s)
Illiterate females, 15-17 years old	9%	10%	8%	295 person(s)
Illiterate people, 18-24 years old	30%	28%	26%	1,645 person(s)
Illiterate females, 18-24 years old	15%	13%	13%	845 person(s)
Illiterate people, 25-60 years old	36%	38%	33%	6,142 person(s)
Illiterate females, 25-60 years old	19%	21%	19%	3,454 person(s)

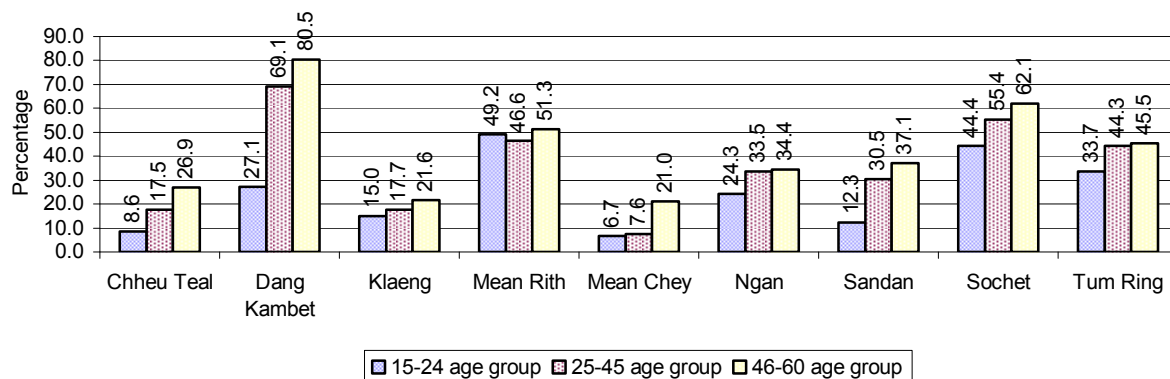
Note: Percentage is calculated on the basis of number of people in age each group.

3.1.21 Percentage illiterate People among 15-60 yrs old, by Commune, in 2008



Note: Percentages are calculated on the basis of number of people in that age group.

3.1.22 Percentage illiterate People for 15-24 yrs, 25-45 yrs and 46-60 yrs, by Commune, in 2008



Note: Percentage of illiterate people in each age group is calculated on the basis of number of people in that age group.

3.2 Health

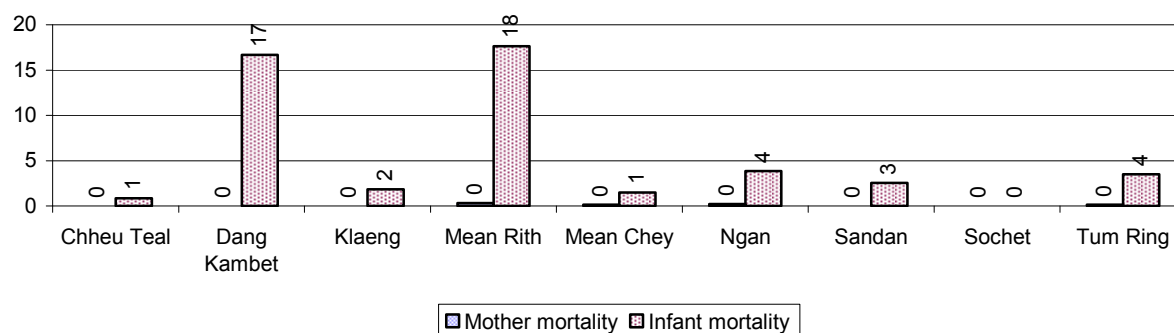
3.2.1 Health Situation of Women and Children, over 3 years

Description	2006	2007	2008
Number families with a birth during the year	1,060 families	839 families	867 families
Number of women who had their baby delivered by a TBA	950 person(s)	699 person(s)	699 person(s)
Percentage of women who had their baby delivered by a TBA	90 %	83 %	81 %
Number of women who had their baby delivered by a midwife	110 person(s)	140 person(s)	168 person(s)
Percentage of women had their baby delivered by a midwife	10 %	17 %	19 %
Number of mothers who died within 1 month of giving birth	4 person(s)	8 person(s)	6 person(s)
Mothers who died within 1 month of giving birth	377	954	692

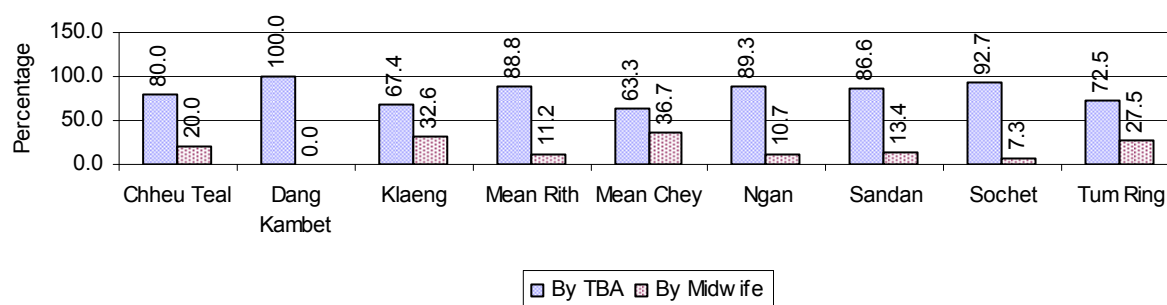
Description	2006	2007	2008
per 100,000 families having a delivery			
Number of infants born during the year	1,060 person(s)	839 person(s)	876 person(s)
Number of Infants who died within 1 month	40 person(s)	41 person(s)	19 person(s)
Infants mortality within 1 month per 1,000 births	38	49	22
Number of children who died below the age of 5.	49 person(s)	23 person(s)	26 person(s)
Number of infants, aged 9-12 months, born during the year	633 person(s)	465 person(s)	512 person(s)
Nr. infants, aged 9-12 months, not receiving full immunization	83 person(s)	34 person(s)	23 person(s)
% of 9-12 months infants, not receiving full immunization	13 %	7 %	4 %

Note: TBA = Traditional Birth Attendant

3.2.2 Mothers dying within 0 days to 1 month of giving Birth and Infants dying within 1 month in 2008, by Commune

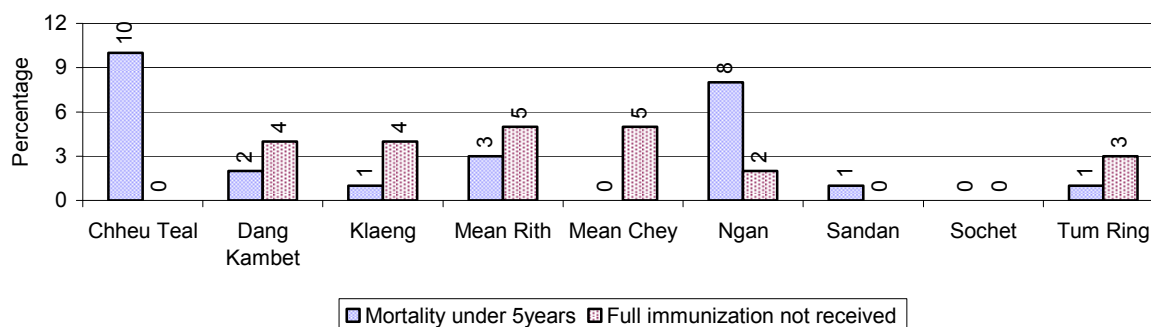


3.2.3 Percentage of Women delivering with a TBA or Midwife, by Commune



Note: Calculated as a percentage of total deliveries

3.2.4 Percentage of Children dying below 5 & of 9-12 months not receiving full Immunization, by Commune, in 2008



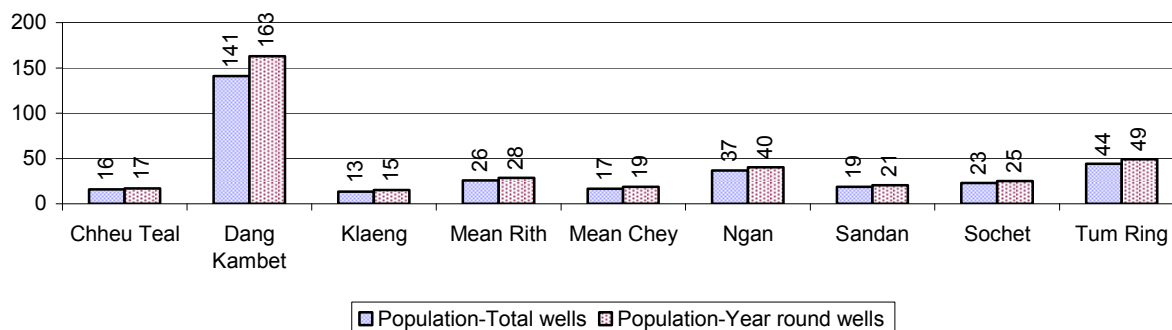
Note: Mortality rate calculated as a percentage of the total 5 year old population. Lack of immunization received calculated as a percentage of the total number 9-12 months olds there are

3.3 Water and Sanitation

3.3.1 Number of different types of Wells over 3 years

Type of wells	Number of wells by year		
	2006	2007	2008
<i>Total number of pumped or mixed wells</i>	791	913	1,124
Year-round usable pumped or mixed wells	728	851	1,056
Dry season unusable pump or mixed wells	63	62	68
Pump or mixed wells needing repair/rehabilitation	92	105	130
<i>Total number of ring wells</i>	1,011	998	1,165
Year-round usable ring wells	897	872	1,024
Dry season unusable ring wells	114	126	141
Ring wells needing repair/rehabilitation	169	132	140
<i>Total number of unprotected dug wells</i>	631	524	779
Year-round usable unprotected dug wells	444	400	630
Dry season unusable unprotected dug wells	187	124	149

3.3.2 Ratio of People to Wells, by Commune, in 2008

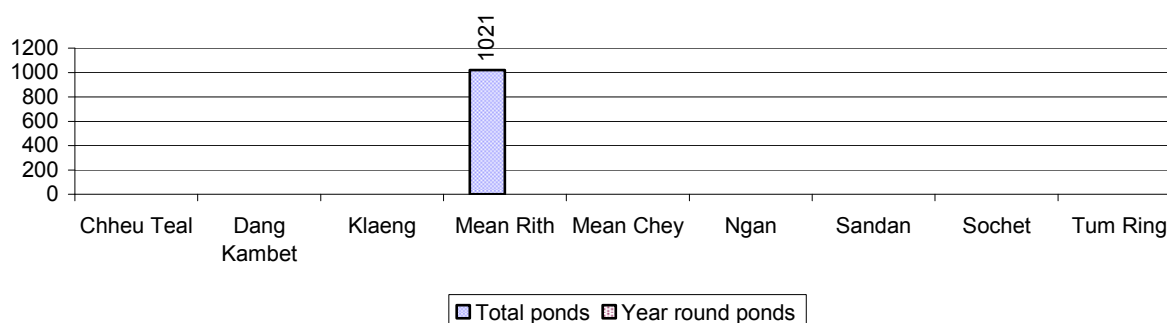


Note: Year-round wells excluding unprotected wells

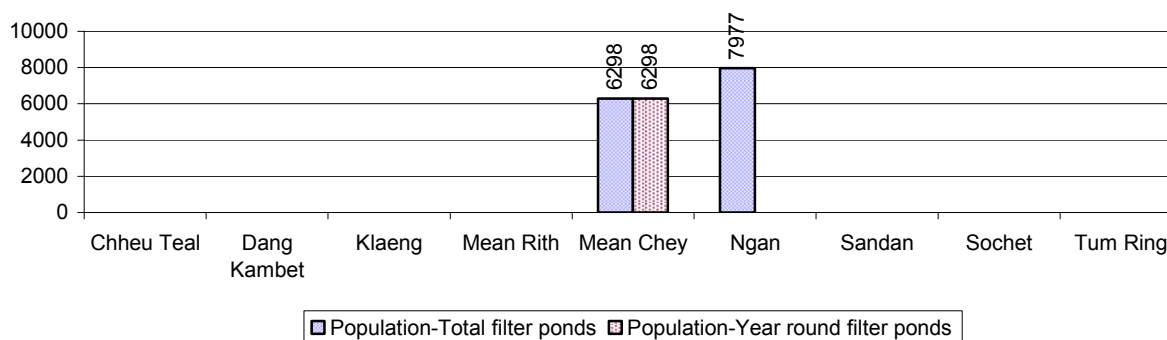
3.3.3 Potable Ponds over 3 years

Type of Pond	2006	2007	2008
<i>Total number of normal-type ponds</i>	7 pond	3 pond	6 pond
Year-round usable normal-type ponds	2 pond	2 pond	0 pond
Dry season unusable normal-type ponds	5 pond	1 pond	6 pond
Normal-type ponds needing repair/rehabilitation	4 pond	0 pond	0 pond
<i>Total number of filter ponds</i>	0 pond	0 pond	2 pond
Year-round usable filter ponds	0 pond	0 pond	1 pond
Filter ponds, dry season unusable	0 pond	0 pond	1 pond
Filter ponds needing repair/rehabilitate	0 pond	0 pond	0 pond

3.3.4 Ratio of People to normal Ponds, by Commune in 2008



3.3.5 Ratio of People to Filter Ponds, by Commune, in 2008

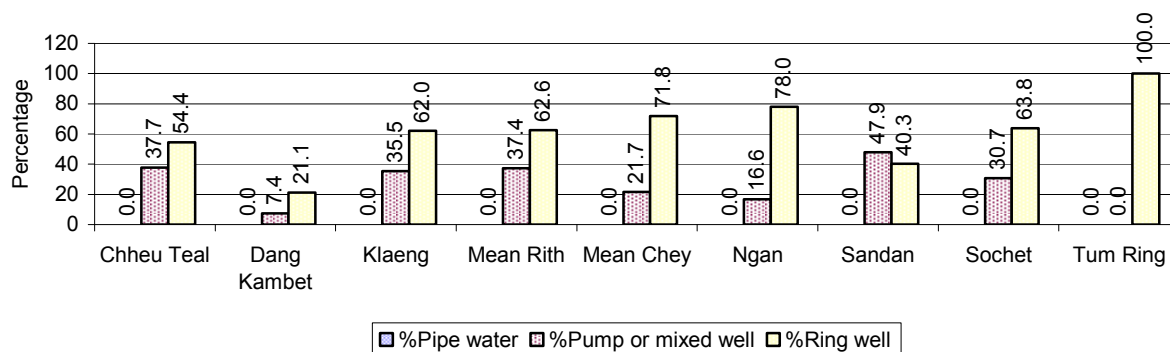


3.3.6 Source of potable Water for Households, over 3 years

Water sources	2006 %	2007 %	2008	
			%	Number
Families using water from purification system	1%	0 %	0 %	0 families
Families using water from pump, mixed wells	23%	24 %	29 %	2,974 families
Families using water from ring wells and open dug wells	64%	64 %	63 %	6,565 families
Families using water from pond	1%	0 %	0 %	34 families
Families using water from rain water storage	0%	0 %	0 %	0 families
Families using water from rivers, lakes, natural ponds and reservoirs	11%	12 %	8 %	822 families

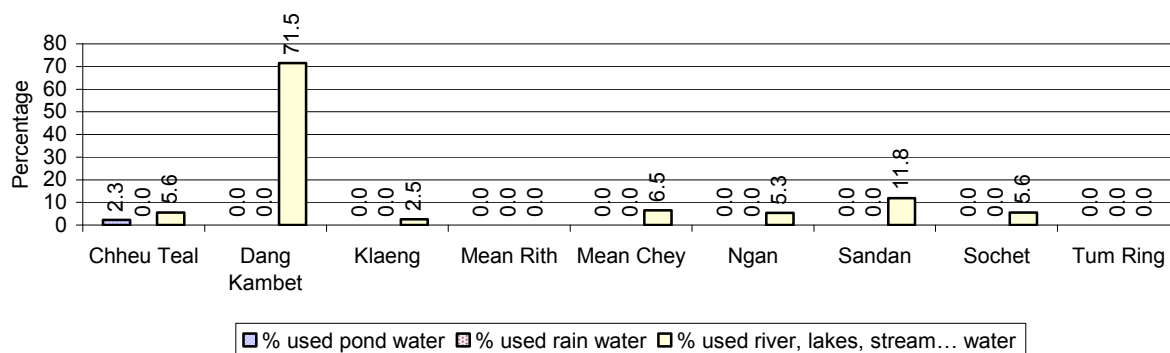
Note: Calculated as a percentage of the total number of families.

3.3.7 Percentage Families using different Water Sources, by Commune, in 2008



Note: Calculated as a percentage of the total number of families in each commune

3.3.8 Percentage Families using Water from Rain Water Storage, Ponds and natural Sources (rivers/lakes/natural ponds/reservoirs), by Commune, 2008



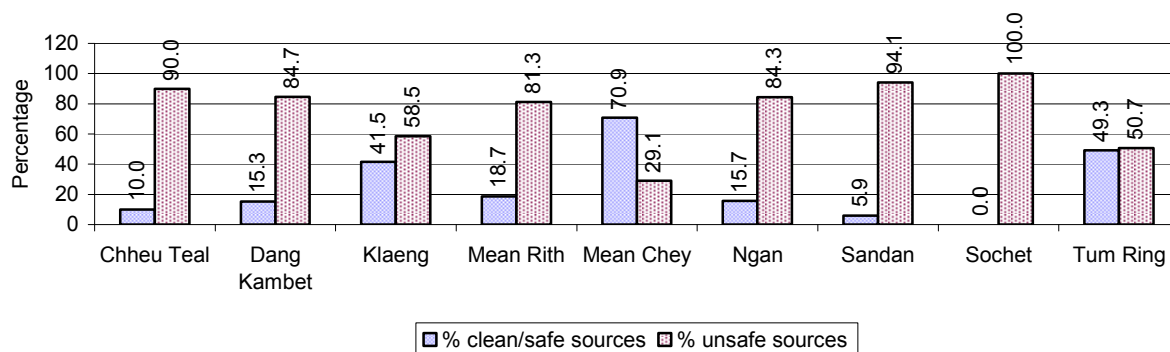
Note: Calculated as a percentage of the total number of families in each commune

3.3.9 Drinking Water Sources in the dry Season over 3 years

Percentage Families that get drinking water from:	2006 %	2007 %	2008	
			%	Number
from clean/safe sources	32 %	22 %	25 %	2,647 families
from unsafe sources	68 %	78 %	75 %	7,748 families

Note: Calculated as a percentage of the total number of families.

3.3.10 Percentage Families using safe and unsafe Water Sources in the dry Season, by Commune, in 2008



Note: Calculated as a percentage of the total number of families in each commune.

3.3.11 Drinking Water Purification by Households, over 3 years

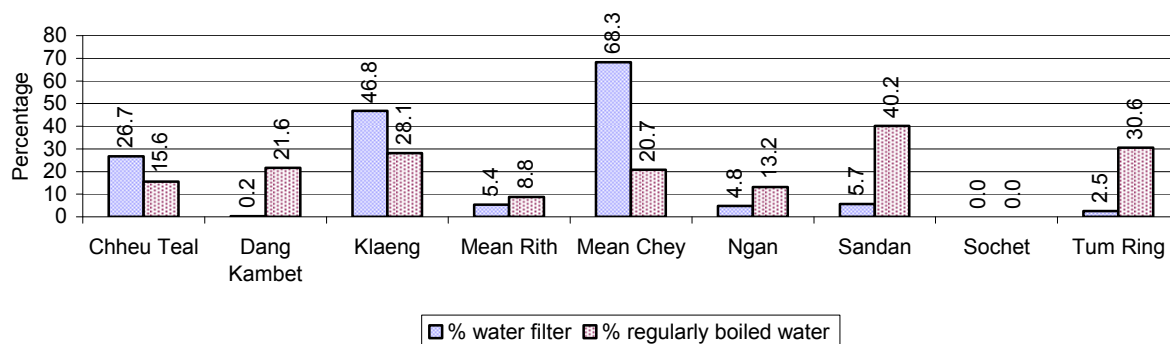
This table shows the different ways families make water safe for drinking.

Families, who:	2006	2007	2008	
	%	%	%	Number
Filter water for drinking	9%	15%	19 %	1,994 families
Boil water for drinking	30%	28%	21 %	2,227 families

Note: Calculated as a percentage of the total number of families

3.3.12 Percentage Families filtering Water or regularly boiling Water, by Commune, in 2008

This graph shows the different ways families make drinking water safe.



Note: Calculated on as a percentage of the total number of families in each commune.

3.3.13 Families' access to Water, over 3 years

Families access to water	2006	2007	2008	
	%	%	%	Number
Families with water at home or in less than 150m	41%	42%	89 %	9,276 families
Families with water 150m or more away from home	13%	17%	10 %	1,065 families

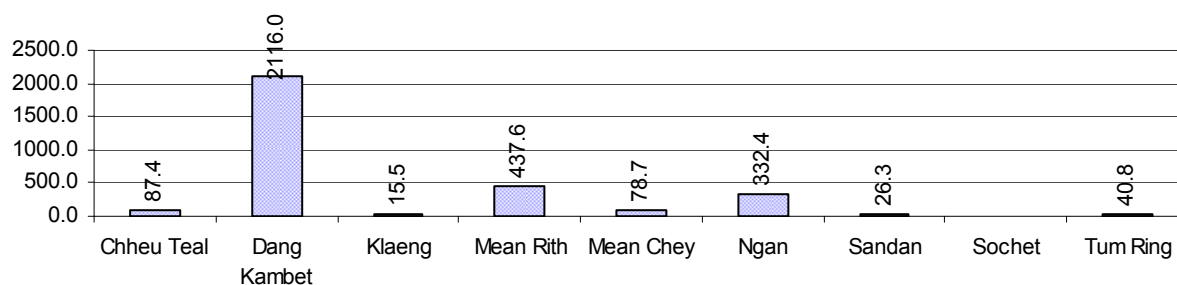
Note: Calculated as a percentage of the total number of families

3.3.14 Ratio of people to Latrines over 3 years

Description	2006 Ratio	2007 Ratio	2008	
			Ratio	Number
Ratio of people to latrines	76.9	81.4	56.1	895.0

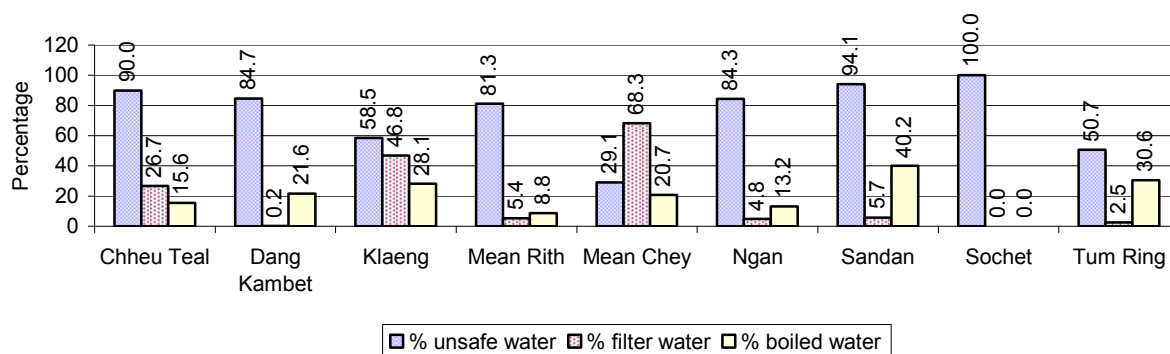
Note: Ratio calculated by dividing the number of houses with latrines by the total population

3.3.15 Ratio of People to Latrines, by Commune, in 2008



Note: Ratio calculated by dividing the number of houses with latrines by the total population in a Commune.

3.3.16 Percentage of Families drinking boiled, filtered or unsafe Water, by Commune, in 2008



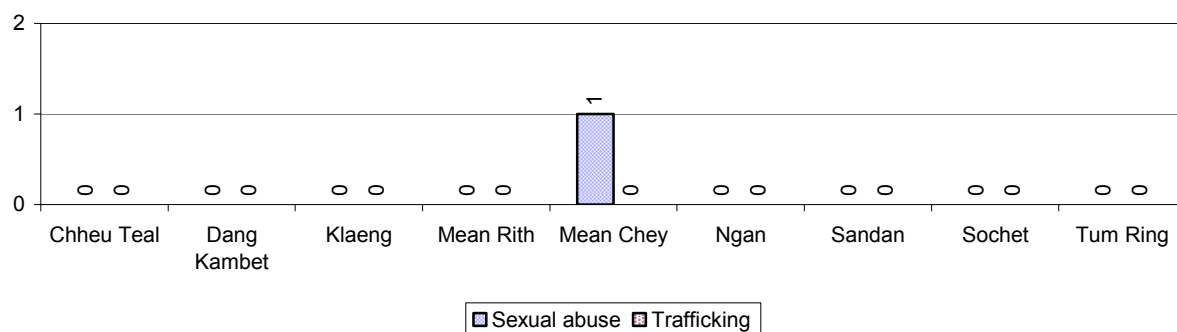
Note: Calculated as a percentage of the total number of families in each commune.

3.4 Vulnerable groups

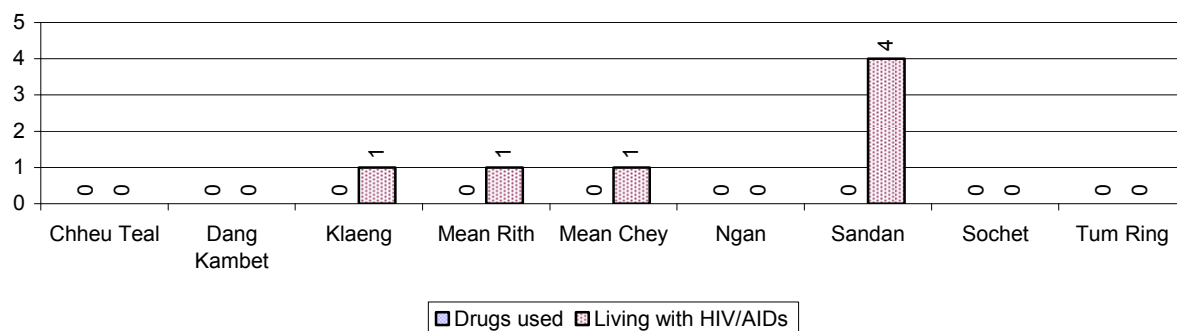
3.4.1 Vulnerable Groups in need of special Protection over 3 years

Vulnerable groups	2006	2007	2008
Victims of sexual abuse	2 person(s)	4 person(s)	1 person(s)
Victims of human trafficking	0 person(s)	0 person(s)	0 person(s)
Families with family member(s) using drugs	0 families	0 families	0 families
Families with family member(s) living with HIV/AIDS	3 families	3 families	7 families
Children under 18 yrs old whose parent died of AIDS	12 person(s)	11 person(s)	5 person(s)
Orphaned/abandoned children under 18 yrs old (all cases)	221 person(s)	196 person(s)	172 person(s)
Elderly persons without guardian	66 person(s)	62 person(s)	45 person(s)
Disabled people able to earn an income	29 person(s)	27 person(s)	41 person(s)
Disabled people unable to earn an income	45 person(s)	34 person(s)	45 person(s)
Disabled people under 18 yrs old	21 person(s)	14 person(s)	23 person(s)
Victims of natural disasters	131 families	191 families	163 families
Victims of land mines and unexploded weapons	22 person(s)	2 person(s)	2 person(s)

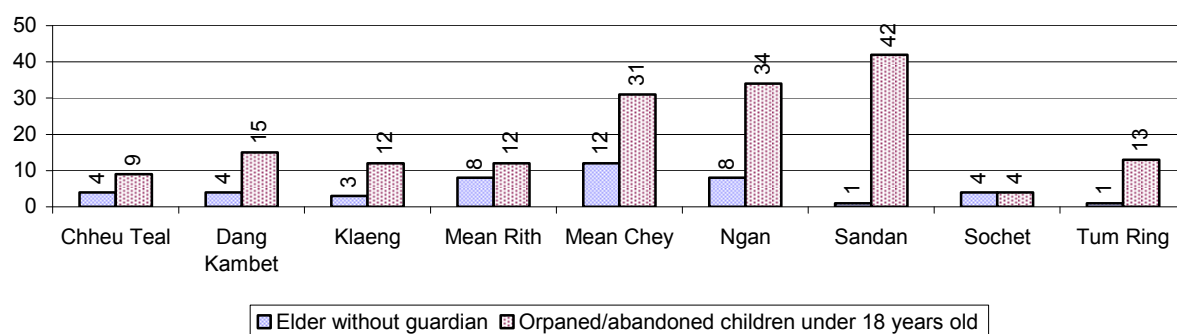
3.4.2 Registered Victims of sexual Abuse or Trafficking, by Commune, for 2008



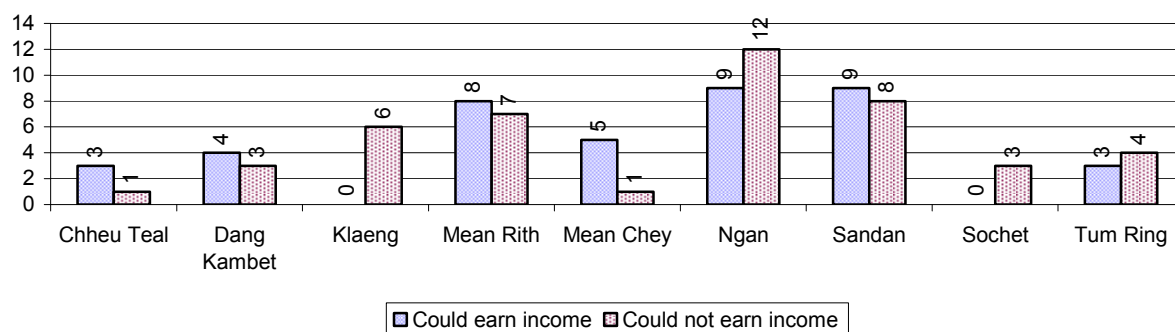
3.4.3 Registered Families with Member(s) using Drugs or living with HIV/AIDS, by Commune, for 2008



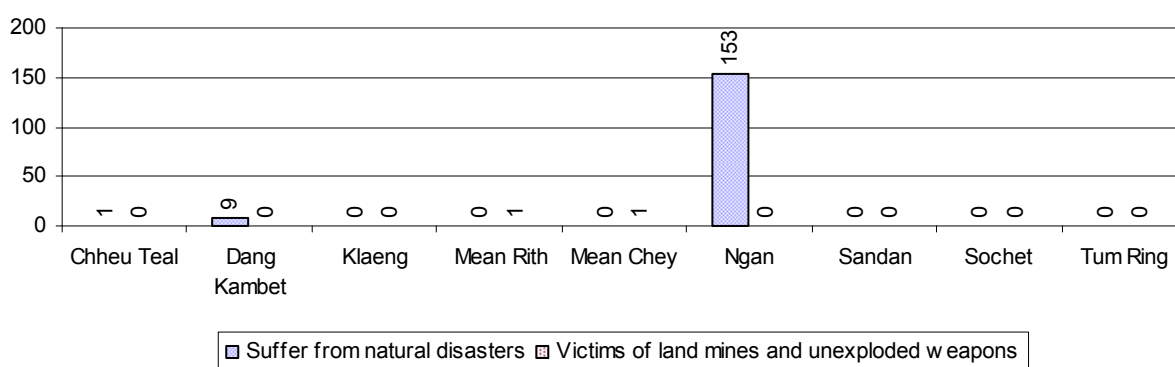
3.4.4 Elderly Persons without a Guardian and orphaned/abandoned Children under 18 years old, by Commune, for 2008



3.4.5 Number of disabled People who could or could not earn an Income, by Commune, for 2008



3.4.6 Number of Families who suffered from natural Disasters, and number of Victims of Land Mines and unexploded Weapons, by Commune, in 2008



3.5 Migration

3.5.1 Migration over 3 years

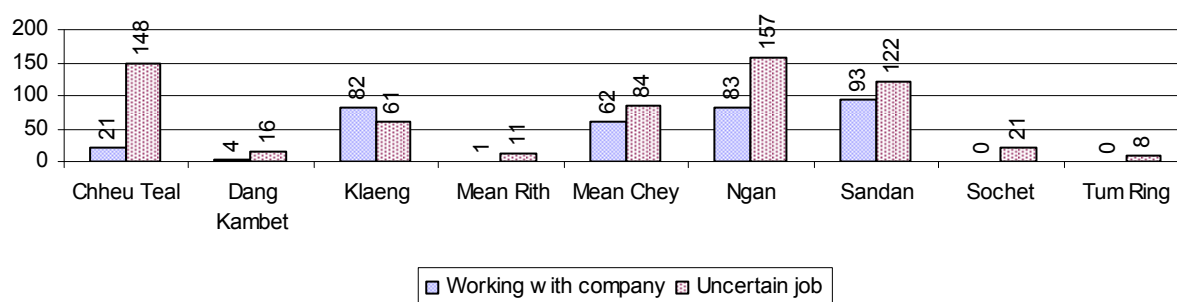
Description	2006	2007	2008
Number of families permanently in-migrated	132families	118 families	164 families
Total number of people	684 person(s)	493 person(s)	685 person(s)
Total number of female	339 person(s)	246 person(s)	351 person(s)
Number of families permanently out-migrated	55 families	45 families	67 families
Total number of people	237 person(s)	150 person(s)	264 person(s)
Total number of female	119 person(s)	87 person(s)	133 person(s)
Number of families staying temporarily	86 families	97 families	113 families
Total number of people	320 person(s)	331 person(s)	495 person(s)
Total number of female	159 person(s)	137 person(s)	213 person(s)

3.5.2 Job Migration

Description	2006	2007	2008	
Number of people migrated to work with company/factory	2%	2%	1%	346 persons
Number of people migrated to work, but have uncertain jobs	4%	4%	3%	628 persons

Note: Calculated as a percentage of the total population of 18-60 year olds

3.5.3 Number of People working outside their home Villages in a Company/Factory or with an uncertain Job in 2008

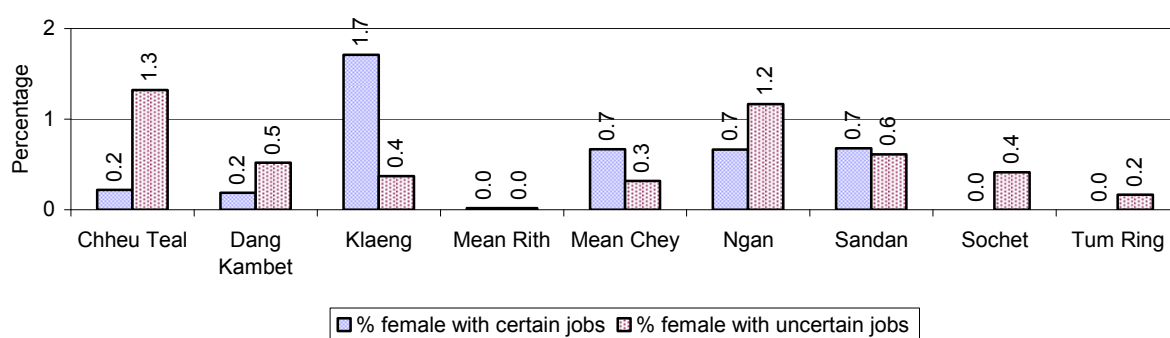


3.5.4 Female migration over 3 years

Description	2006 %	2007 %	2008	
			%	Number
Total number of migrants	3.1%	2.8%	1.9%	974 person(s)
Number of female migrants	1.5%	1.5%	1.1%	549 person(s)
Total number of migrants, who go to work with company/factory (with certain jobs)	1.0%	0.9%	0.7%	346 person(s)
Number of female migrants with certain jobs	0.7%	0.6%	0.5%	238 person(s)
Total number of migrants with uncertain jobs	2.0%	1.8%	1.3%	628 person(s)
Number of female migrants with uncertain jobs	0.9%	0.8%	0.6%	311 person(s)

Note: Calculated as a percentage of the total population

3.5.5 Percentage female Migrants with certain and uncertain Jobs, by Commune, in 2008



Note: Calculated as a percentage of the total population of the commune

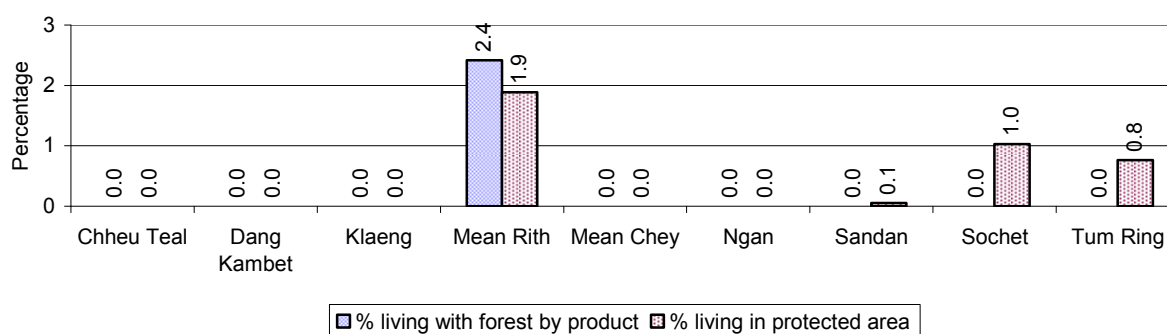
4 Natural Resources and Environment (NRE)

4.1 Families involved with NRE issues over 3 years

Description	2006 %	2007 %	2008	
			%	Number
Families living with forest by products	0 %	0 %	0 %	32 families
Families living in a protected area	3 %	1 %	0 %	39 families
Houses with access to garbage collection service	0 %	0 %	1 %	72 families
Families affected by environmental pollution	2 %	0 %	0 %	3 families
Families using chemical fertilizer	21 %	21 %	14 %	1,505 families
Families using chemical pesticide	8 %	7 %	4 %	401 families

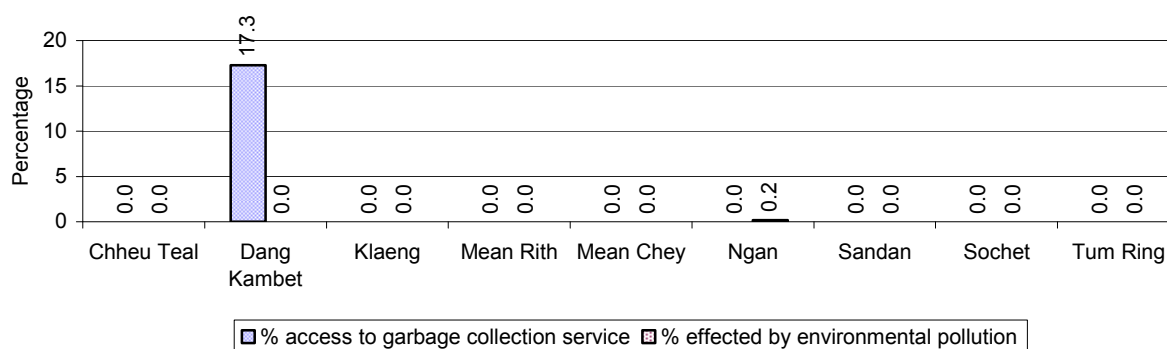
Note: Calculated as a percentage of the total number of families

4.2 Percentage of Families involved with Natural Resource issues, by Commune, for 2008



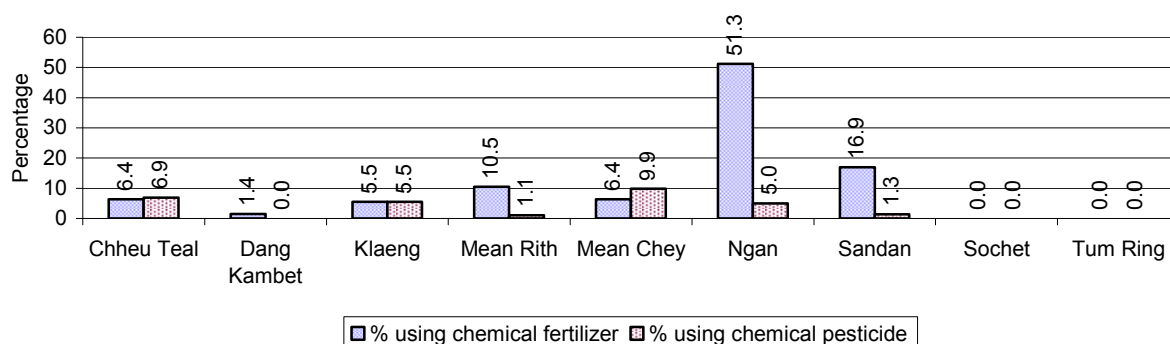
Note: Calculated as a percentage of the number of families in each commune

4.3 Percentage Houses with access to Garbage collection and Families affected by environmental Pollution, by Commune, for 2008



Note: Garbage collection is calculated as a percentage of the total number of houses in each commune and families affected by environmental pollution is calculated as a percentage of the total number of families in each commune.

4.4 Percentage Families using chemical Fertilizer and chemical Pesticides, by Commune, for 2008



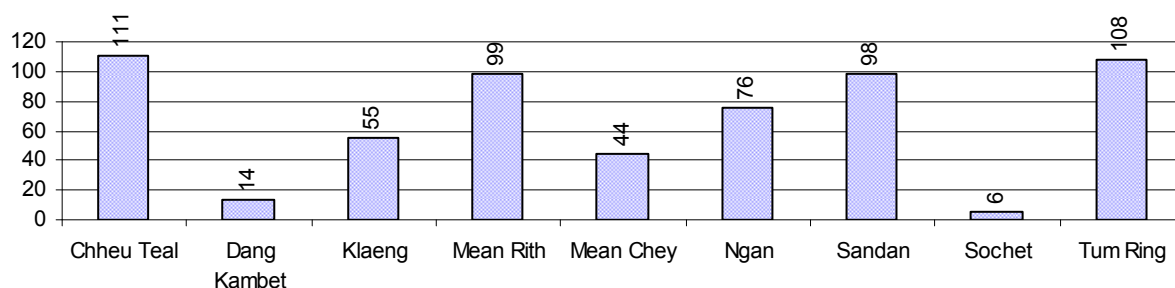
Note: Calculated as a percentage of the total number of families in each commune

5 Administration and Security

5.1 Birth Registration across 3 years

Description	2006	2007	2008
Number of infants to be registered	1,020 person(s)	798 person(s)	857 person(s)
Number of unregistered infants the year	623 person(s)	607 person(s)	611 person(s)
Percentage of infants unregistered	61 %	76 %	71 %

5.2 Number of unregistered Infants born in 2008, by Commune

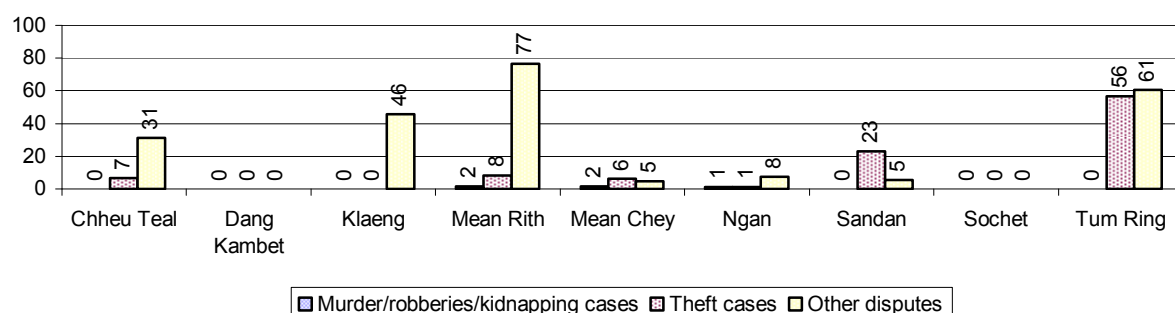


5.3 Registered criminal Cases over 3 years

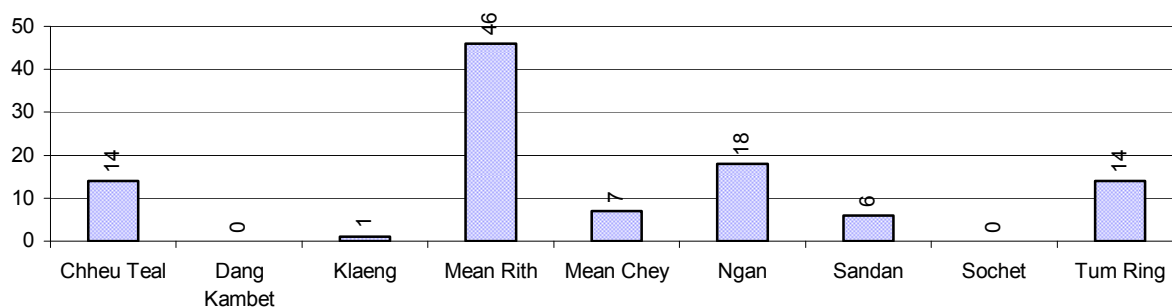
Description	2006	2007	2008
Murders, robberies and kidnapping cases	3 case(s)	2 case(s)	3 case(s)
Theft cases	81 case(s)	48 case(s)	63 case(s)
land dispute cases	194 case(s)	97 case(s)	106 case(s)
Other disputes cases	229 case(s)	136 case(s)	129 case(s)

Note: this reflects only registered criminal cases

5.4 Registered criminal Cases per 10,000 people, by Commune, for 2008



5.5 Number of registered Land Disputes, by Commune, in 2008

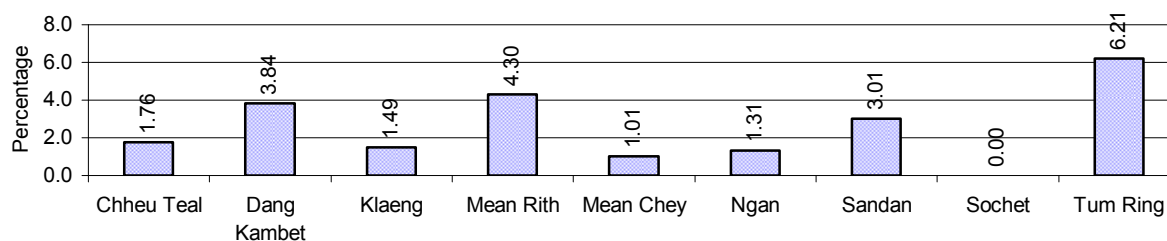


6 Gender

6.1 Registered Domestic Violence over 3 years

Description		2006	2007	2008
Families experiencing domestic violence		269 families	278 families	267 families(s)
% families experiencing domestic violence		3 %	3 %	3 %
Domestic violence cases reported by village chiefs		132 case(s)	250 case(s)	259 case(s)
Type	Physical violence	79 case(s)	99 case(s)	139 case(s)
	Sexual violence	6 case(s)	8 case(s)	9 case(s)
	Mental violence	29 case(s)	88 case(s)	74 case(s)
	Household economic violence	18 case(s)	55 case(s)	37 case(s)
Number of administrative decisions on domestic violence		49 case(s)	38 case(s)	118 case(s)
% of administrative decisions on domestic violence		37 %	15 %	46 %

6.2 Percentage of registered cases of Families experiencing domestic Violence, by Commune, in 2008



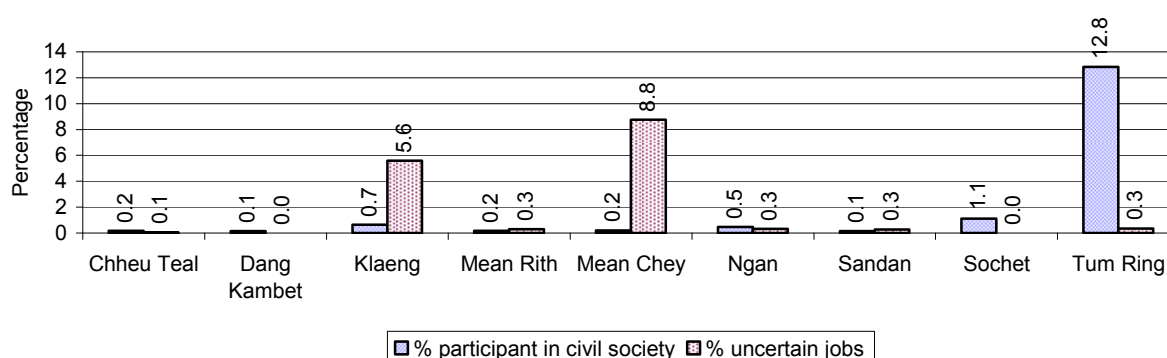
Note: Calculated as a percentage of the total number of families in each commune

6.3 Women's involvement over 3 years

Description	2006 %	2007 %	2008	
			%	Number
People participating in civil society	5%	3%	3%	1,372 person(s)
Women participating in civil society	3%	2%	2%	755 person(s)
People, 18-60 yrs, with uncertain/irregular jobs	4%	2%	3%	825 person(s)
Women, 18-60 yrs, with uncertain/irregular jobs	2%	1%	2%	411 person(s)

Note: Participation can be in NGOs, CBOs, credit groups, women's unions, parties and other civil society organizations. The first section is calculated as a percentage of the total population. The second section is calculated as a percentage of the total 18-60 year old population.

6.4 Percentage of Female Participants in Civil Society and of 18-60 year women with uncertain Jobs, by Commune, in 2008



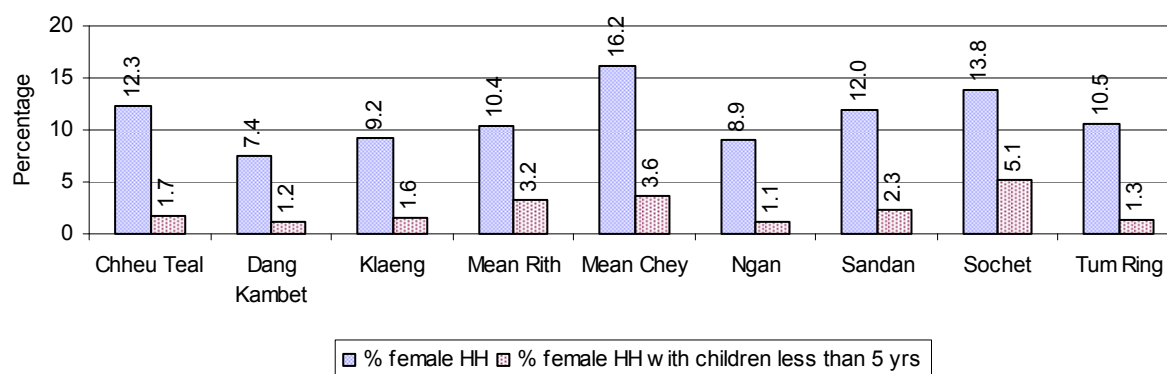
Note: Percentage of female participants in civil society is calculated as a percentage of the total population per commune. The percentage of 18-60 years old women with uncertain jobs is calculated as a percentage of the total 18-60 year old population per commune.

6.5 Female-headed Households over 3 years

Families with:	2006 %	2007 %	2008	
			%	Number
Households in which a woman is the family head	11%	14%	11%	1,191 families
Households in which a woman is the family head with children of less than 5 yrs	1%	2%	2%	235 families

Note: Calculated as a percentage of the total number of families

6.6 Percentage female-headed Households and with Children of less than 5 years old, by Commune, in 2008



Note: Calculated as a percentage of the total number of families in each commune
HH: Headed Household

7 Indigenous People in the District

7.1 Ethnic Minorities in the District over 3 years

Race of indigenous	2006		2007		2008	
	# families	# population	# families	# population	# families	# population
Phnong	0 families	0 person(s)	0 families	0 person(s)	0 families	0 person(s)
Kouy	265 families	1,359 person(s)	330 families	1,644 person(s)	269 families	1,347 person(s)
Stieng	0 families	0 person(s)	0 families	0 person(s)	0 families	0 person(s)
Mil	0 families	0 person(s)	0 families	0 person(s)	0 families	0 person(s)
Kroal	0 families	0 person(s)	0 families	0 person(s)	0 families	0 person(s)
Thmorn	0 families	0 person(s)	0 families	0 person(s)	0 families	0 person(s)
Khaonh	0 families	0 person(s)	0 families	0 person(s)	0 families	0 person(s)
Tompuonn	0 families	0 person(s)	0 families	0 person(s)	0 families	0 person(s)
Charay	0 families	0 person(s)	0 families	0 person(s)	0 families	0 person(s)
Kroeung	0 families	0 person(s)	0 families	0 person(s)	0 families	0 person(s)
Kavet	0 families	0 person(s)	0 families	0 person(s)	0 families	0 person(s)
Saouch	0 families	0 person(s)	0 families	0 person(s)	0 families	0 person(s)
Lun	0 families	0 person(s)	0 families	0 person(s)	0 families	0 person(s)
Kachak	0 families	0 person(s)	0 families	0 person(s)	0 families	0 person(s)
Praov	0 families	0 person(s)	0 families	0 person(s)	0 families	0 person(s)
Others	0 families	0 person(s)	0 families	0 person(s)	0 families	0 person(s)
Total	265 families	1,359 person(s)	330 families	1,644 person(s)	269 families	1,347 person(s)

Note: "Others" refer to other ethnic groups which are not listed.

7.2 Other Minorities in the District over 3 years

Minority	2006		2007		2008	
	# families	# population	# families	# population	# families	# population
Khmer Islamic	3 families	21 person(s)	2 families	15 person(s)	5 families	27 person(s)
Vietnamese	0 families	0 person(s)	0 families	0 person(s)	0 families	0 person(s)
Laos	0 families	0 person(s)	0 families	0 person(s)	0 families	0 person(s)

Note: Number of indigenous and minority population are additional data, so some village may not recorded.

SECTION C: PLANS AND PROJECTS

8 Priorities and Plans

8.1 Priorities of Commune Councils for 2009 in the District by Sector

The District Priority Activity Matrix (DPAM) data are taken from the CDPD. The DPAM is used for the District Integration Workshop (DIW), to show what kind of projects the commune has proposed in their Commune Investment Plan (CIP) for 2009. Donors, departments and other agencies then consider which projects they want to support and which projects they are not interested in. This results in Temporary Agreements between the Commune Council and the Supporter (NGO, Department, private donor, etc), as shown in table 8.2

No.	Project Name	Chheu Teal	Dang Kambet	Klaeng	Mean Rith	Mean Chey	Ngan	Sandan	Sochet	Tum Ring	Req.Project
		60601	60602	60603	60604	60605	60606	60607	60608	60609	Total
Economic											
1	Compost fertilizer training				6 training		13 training	1 training	2 training		4
2	Vegetable growing training			1 training		2 training					2
3	Mixed farming system training	3 training	5 training			2 training				2 training	4
4	Rice field demonstration			7 training	3 training	7 training					3
5	Rice cultivation technique training						6 training				1
6	Animal vaccination request	3745 Head	1631 Head	1973 Head	2089 Head	3573 Head		550 Head	1108 Head	1028 Head	8
7	Village veterinary training	20 person									1
8	Animal raising training	3 training									1
9	Chicken raising training			1 training							1
10	Rice seed request	2100 Kg	1628 Kg		950 Kg		1560 Kg	2000 Kg	2348 Kg		6
11	Fruit trees seedling request					700 Tree			1300 Tree		2
12	Vegetable seeds request									30 Kg	1
13	Livestock raising request	1250 Head									1
14	Vegetable seed and farming tools request	270 Kg									1

District Data Book 2009: Development Plans and Projects

No.	Project Name	Chheu Teal	Dang Kambet	Klaeng	Mean Rith	Mean Chey	Ngan	Sandan	Sochet	Tum Ring	Req.Project
		60601	60602	60603	60604	60605	60606	60607	60608	60609	Total
15	Rubber seed request									2 Time	1
16	Family fish pond construction	12 Pond		31 Pond		6 Pond					3
17	Fish fingerling request	14500 Head		46500 Head							2
18			1300 m	1700 m	6300 m	820 m	2500 m	1200 m	2470 m	2650 m	8
19		8 place		12 place						16 place	3
20		1500 m									1
21						2460 m					1
22		5000 m			625 m		11400 m	2400 m			4
23		590 m		520 m							2
24				2 place			1 place				2
25						480 m					1
26	Cash credit	210 person									1
27	Rice bank establish		3 grange								1
Social											
1	Family planning					2 training					1
2	Antenatal care							2 training			1
3	Health/hygiene education for local people		5 training			4 training					2
4	Children immunization provision	9 village		7 village		11 village	13 village				4
5	Children and women vaccination		6 training					1 training	3 time		3
6	VHV training	25 person								2 Time	2
7	TBA training	18 person						26 person	7 person	9 person	4
8	Mosquito nets distribution/treatment	1318 mosqui- net						1700 mosqui- net		715 mosqui- net	3
9	Malaria awareness education			7 training							1
10	Nutrition support	1598		187			203				3

District Data Book 2009: Development Plans and Projects

No.	Project Name	Chheu Teal	Dang Kambet	Klaeng	Mean Rith	Mean Chey	Ngan	Sandan	Sochet	Tum Ring	Req.Project
		60601	60602	60603	60604	60605	60606	60607	60608	60609	Total
		person		person			person				
11	Latrine construction				20 toilet	60 toilet			340 toilet		3
12	Sanitation day campaign organizing			7 Time							1
13	Sanitation education	3 training			2 training						2
14	KMeragppl;meFüa)aycMeraH Twks¥at	350 tank	50 tank		25 tank		60 tank			58 tank	5
15							60 well				1
16		60 well	10 well		35 well				45 well	11 well	5
17						10 well					1
18						40 well					1
19	Literacy class						6 class				1
20	School building	3 building									1
21								1 building		2 building	2
22	Kindergarten school construction/repair			1 class		5 class	6 class				3
23	Kindergarten equipment provision			1 class							1
24	Motivating pupil's parents for school enrollment		1 training	1 training		1 training	2 training		4 training		5
25	School enrollment encouragement project	3 training									1
26	School materials support to poor pupils	150 person									1
27	Pupils contest promotion	210 person									1
28	Teacher/volunteer teacher training			1 training							1
29	Teacher/volunteer teacher encouragement needs	10 person									1
30	Orphan children assistance/support				191 person						1

District Data Book 2009: Development Plans and Projects

No.	Project Name	Chheu Teal 60601	Dang Kambet 60602	Klaeng 60603	Mean Rith 60604	Mean Chey 60605	Ngan 60606	Sandan 60607	Sochet 60608	Tum Ring 60609	Req.Project Total
NREM											
1	Environmental awareness and law education	1 training	2 training	2 training			13 training	2 training		2 training	6
2	Fishery law education				2 training				2 training		2
3	Forestry law education	2 training		2 training	2 training	1 training		2 training	4 training		6
4	Wildlife protection law education	1 training									1
5	NREM strengthening								2 training		1
6	Tree plantation project					350 Tree					1
7	Strengthening fishery community		3 Fishing Community								1
8	Community forestry activities support		2 Forestry Community								1
9	Forest protection strengthening				2 training					2 training	2
10	Environmental pollution reduction									2 Time	1
Administration and Security											
1	Civil registration encouragement	2 training		1 training	1 training	1 training	2 training		5 training		6
2	Commune study tour								2 training		1
3	Village level capacity building		1 training	1 training	2 training				4 training		4
4	Human rights committee meeting			12 training							1
5	Local planning system strengthening		1 training	1 training							2
6	Commune office construction/renovation								1 building		1
7	Land law dissemination	2 training						2 training		2 training	3
8	Local security									2 training	1

District Data Book 2009: Development Plans and Projects

No.	Project Name	Chheu Teal	Dang Kambet	Klaeng	Mean Rith	Mean Chey	Ngan	Sandan	Sochet	Tum Ring	Req.Project
		60601	60602	60603	60604	60605	60606	60607	60608	60609	Total
	regulation/order dissemination										
9	Identification card issued	1 training									1
10	Traffic accident prevention					1 training				2 training	2
11	Law/regulation dissemination							2 training			1
12	Penal and civil law dissemination	2 training	5 training			1 training				2 training	4
13	Traffic law and public order dissemination	2 training	5 training	7 training			13 training				4
14	Decentralization policy dissemination				2 training						1
Gender											
1	Gender mainstreaming in CIP				2 training	1 training			2 training		3
2	Gender mainstreaming among local people			7 training							1
3	Women & Children FP strengthening				2 training						1
4	CCWCs strengthening/activation		5 training							2 training	2
5	Women vocational training	2 training									1
6	Weaving skill training/weaving craft creation					1 training					1
7	Law against domestic violence dissemination	2 training	2 training	7 training	3 training	1 training	13 training	2 training	6 training	2 training	9
8	Rescue children & women from violence	1 training					2 training				2
9	Law against trafficking dissemination			7 training	3 training	1 training		2 training	2 training	2 training	6

Source: CDPD – District Priority Matrix

8.2 Temporary Agreements by Commune, for 2009²

At the District Integration Workshop (DIW) the Supporters (donors, agencies, private donors, NGOs, etc.) identify which projects/activities they would like to support or they put forward their own projects to be implemented in a particular commune. Once there is agreement between Commune Councils and Supporters on specific projects a **Temporary Agreement** is signed by the commune and the Supporter to show their mutual commitment to the identified projects/activities.

It is important to keep in mind that such Temporary Agreements do not necessarily result in implementation.

8.2.1 Temporary Agreements for 2009 as per DIW 2008 for Commune: Chheu Teal

Commune GIS	Commune	Temporary Agreements				Supporter	Funding Source	Listed in CIP befor DIW
		Project Name	Quantity	Unit	Est.Cost (K.Riels)			
Economic								
60601	Chheu Teal	Mixed farming system training	0	training	0	World Vision International - Cambodia		<input type="checkbox"/>
60601	Chheu Teal	Pipes supply	0	place	0	World Vision International - Cambodia		<input type="checkbox"/>
60601	Chheu Teal	Fish fingerlings supply	0	family	0	World Vision International - Cambodia		<input type="checkbox"/>
60601	Chheu Teal	Livestock vaccinating support	0	Head	0	World Vision International - Cambodia		<input type="checkbox"/>
60601	Chheu Teal	Pig supply for raising	0	Head	0	World Vision International - Cambodia		<input type="checkbox"/>
60601	Chheu Teal	Vegetable seed supply	0	family	0	World Vision International - Cambodia		<input type="checkbox"/>
60601	Chheu Teal	Livestock raising technique training and village vet selection	0	training	0	World Vision International - Cambodia		<input type="checkbox"/>
60601	Chheu Teal	Village vet training	0	training	0	World Vision International - Cambodia		<input type="checkbox"/>
60601	Chheu Teal	Livelihood improvement group study tour support	0	time	0	World Vision International - Cambodia		<input type="checkbox"/>
60601	Chheu Teal	Materials support for livelihood improvement group and development community	0	Team	0	World Vision International - Cambodia		<input type="checkbox"/>

² Not all the data from the CDPD has been translated to English, this has resulted in some cells in the TA tables being blank.

District Data Book 2009: Development Plans and Projects

Commune GIS	Commune	Temporary Agreements				Supporter	Funding Source	Listed in CIP before DIW
		Project Name	Quantity	Unit	Est.Cost (K.Riels)			
60601	Chheu Teal	Livelihood improvement reflection workshop	0	time	0	World Vision International - Cambodia		<input type="checkbox"/>
60601	Chheu Teal	Livelihood group management training	0	Team	0	World Vision International - Cambodia		<input type="checkbox"/>
60601	Chheu Teal	Chicken raising supply	0	Head	0	World Vision International - Cambodia		<input type="checkbox"/>
Social								
60601	Chheu Teal	Diarrhea awareness education to community	0	training	0	World Vision International - Cambodia		<input type="checkbox"/>
60601	Chheu Teal	Children immunization provision	9	village	0	Department of Health		✓
60601	Chheu Teal	VHV training	0	person	0	Department of Health		✓
60601	Chheu Teal	Livelihood improvement group study tour support	0	time	0	World Vision International - Cambodia		<input type="checkbox"/>
60601	Chheu Teal	Sanitation education	9	training	0	Department of Health		✓
60601	Chheu Teal	Birth delivery awareness training to TBA	0	person	0	World Vision International - Cambodia		<input type="checkbox"/>
60601	Chheu Teal	Ferrous food supply	0	time	0	World Vision International - Cambodia		<input type="checkbox"/>
60601	Chheu Teal	New teaching methodology support to teachers	0	training	0	World Vision International - Cambodia		<input type="checkbox"/>
60601	Chheu Teal	Children club materials support	0	set	0	World Vision International - Cambodia		<input type="checkbox"/>
60601	Chheu Teal	Pupils sport activities support	0	time	0	World Vision International - Cambodia		<input type="checkbox"/>
60601	Chheu Teal	Youth and children study tour support	0	time	0	World Vision International - Cambodia		<input type="checkbox"/>
60601	Chheu Teal	School pay yard improvement	0	schools	0	World Vision International - Cambodia		<input type="checkbox"/>
60601	Chheu Teal	Incentive materials support to community kindergarten teachers	0	person	0	World Vision International - Cambodia		<input type="checkbox"/>
60601	Chheu	Malaria and dengue fever prevention	0	training	0	World Vision International -		<input type="checkbox"/>

District Data Book 2009: Development Plans and Projects

Commune GIS	Commune	Temporary Agreements				Supporter	Funding Source	Listed in CIP before DIW
		Project Name	Quantity	Unit	Est.Cost (K.Riels)			
	Teal	training				Cambodia		
60601	Chheu Teal	Reflection workshop training	0	time	0	World Vision International - Cambodia		<input type="checkbox"/>
60601	Chheu Teal	Malaria and dengue fever combated campaign	0	training	0	World Vision International - Cambodia		<input type="checkbox"/>
60601	Chheu Teal	Latrine construction for school	0	toilet	0	World Vision International - Cambodia		<input type="checkbox"/>
60601	Chheu Teal	Village sanitation day support	0	time	0	World Vision International - Cambodia		<input type="checkbox"/>
60601	Chheu Teal	Safe water use awareness training	0	training	0	World Vision International - Cambodia		<input type="checkbox"/>
60601	Chheu Teal	Water filter equipment support	0	tank	0	World Vision International - Cambodia		<input type="checkbox"/>
60601	Chheu Teal	Ring wells construction	0	well	0	World Vision International - Cambodia		<input type="checkbox"/>
60601	Chheu Teal	Wells construction for poor families and school	0	well	0	World Vision International - Cambodia		<input type="checkbox"/>
60601	Chheu Teal	Patient building construction	0	building	0	World Vision International - Cambodia		<input type="checkbox"/>
60601	Chheu Teal	Teachers' study tour support	0	time	0	World Vision International - Cambodia		<input type="checkbox"/>
NREM								
60601	Chheu Teal	Wildlife protection law education	3	Forestry Community	6150	Forest administration	PIF	✓
Administration and Security								
60601	Chheu Teal	Disaster management training	3	Forestry Community	6150	World Vision International - Cambodia	PIF	<input type="checkbox"/>
Gender								
60601	Chheu Teal	Child advocacy training on child rights	0	training	0	World Vision International - Cambodia		<input type="checkbox"/>
60601	Chheu Teal	International children's day celebration	0	time	0	World Vision International - Cambodia		<input type="checkbox"/>

8.2.2 Temporary Agreements for 2009 as per DIW 2008 for Commune: Dang Kambet

Commune GIS	Commune	Temporary Agreements				Supporter	Funding Source	Listed in CIP before DIW
		Project Name	Quantity	Unit	Est.Cost (K.Riels)			
Economic								
60602	Dang Kambet	Rice warehouse support, rice bank creation	1	place	0	Minority Organisation for Development Economic		<input type="checkbox"/>
60602	Dang Kambet	Rice bank member strengthening	2	village	0	Minority Organisation for Development Economic		<input type="checkbox"/>
60602	Dang Kambet	Rice seed for rice field demonstration	50	Kg	0	Minority Organisation for Development Economic		<input type="checkbox"/>
60602	Dang Kambet	Compost making materials support	6	hoc	0	Minority Organisation for Development Economic		<input type="checkbox"/>
60602	Dang Kambet	Mixed farming system training	5	person	0	Minority Organisation for Development Economic		✓
60602	Dang Kambet	Rice seed request	120	package	0	Minority Organisation for Development Economic		✓
Social								
60602	Dang Kambet	Village volunteer training	1	training	0	Minority Organisation for Development Economic		<input type="checkbox"/>
60602	Dang Kambet	TBA training	1	training	0	Minority Organisation for Development Economic		<input type="checkbox"/>
60602	Dang Kambet	Health/hygiene education for local people	0	training	0	Minority Organisation for Development Economic		✓
60602	Dang Kambet	Ring wells construction	0	well	0			✓
NREM								
60602	Dang Kambet	Community forestry activities support	2	Forestry Community	4100	Forest administration	PIF	✓

8.2.3 Temporary Agreements for 2009 as per DIW 2008 for Commune: Klaeng

Commune GIS	Commune	Temporary Agreements				Supporter	Funding Source	Listed in CIP before DIW
		Project Name	Quantity	Unit	Est.Cost (K.Riels)			
Economic								
60603	Klaeng		0	place	0	World Vision International - Cambodia		<input type="checkbox"/>
60603	Klaeng	Rice store	0	grange	0			<input type="checkbox"/>
60603	Klaeng		0	training	0	World Vision International - Cambodia		<input type="checkbox"/>
60603	Klaeng		0	training	0	World Vision International - Cambodia		<input type="checkbox"/>
60603	Klaeng		0	Team	0	World Vision International - Cambodia		<input type="checkbox"/>
60603	Klaeng		0	person	0	World Vision International - Cambodia		<input type="checkbox"/>
60603	Klaeng		0	person	0	World Vision International - Cambodia		<input type="checkbox"/>
60603	Klaeng		0	person	0	World Vision International - Cambodia		<input type="checkbox"/>
60603	Klaeng		0	family	0	World Vision International - Cambodia		<input type="checkbox"/>
60603	Klaeng		0	Head	0	World Vision International - Cambodia		<input type="checkbox"/>
60603	Klaeng		0	Head	0	World Vision International - Cambodia		<input type="checkbox"/>
60603	Klaeng		0	person	0	World Vision International - Cambodia		<input type="checkbox"/>
60603	Klaeng		0	Head	0	World Vision International - Cambodia		<input type="checkbox"/>
Social								
60603	Klaeng		0	training	0	World Vision International - Cambodia		<input type="checkbox"/>
60603	Klaeng	Children immunization provision	0	village	0	Department of Health		✓
60603	Klaeng	Malaria awareness education	0	training	0	Department of Health		✓

District Data Book 2009: Development Plans and Projects

Commune GIS	Commune	Temporary Agreements				Supporter	Funding Source	Listed in CIP before DIW
		Project Name	Quantity	Unit	Est.Cost (K.Riels)			
60603	Klaeng		0	place	0	World Vision International - Cambodia		<input type="checkbox"/>
60603	Klaeng	Youth group training	0	training	0			<input type="checkbox"/>
60603	Klaeng	Women group training	0	training	0			<input type="checkbox"/>
60603	Klaeng	Scholarship for poor pupils	0	person	0			<input type="checkbox"/>
60603	Klaeng	Children school enrolment engagement	0	time	0			<input type="checkbox"/>
60603	Klaeng		0	class	0	World Vision International - Cambodia		<input type="checkbox"/>
60603	Klaeng		0	schools	0	World Vision International - Cambodia		<input type="checkbox"/>
60603	Klaeng		0	time	0	World Vision International - Cambodia		<input type="checkbox"/>
60603	Klaeng		0	time	0	World Vision International - Cambodia		<input type="checkbox"/>
60603	Klaeng		0	well	0	World Vision International - Cambodia		<input type="checkbox"/>
60603	Klaeng		0	set	0	World Vision International - Cambodia		<input type="checkbox"/>
60603	Klaeng		0	training	0	World Vision International - Cambodia		<input type="checkbox"/>
60603	Klaeng		0	toilet	0	World Vision International - Cambodia		<input type="checkbox"/>
60603	Klaeng		0	pipe	0	World Vision International - Cambodia		<input type="checkbox"/>
60603	Klaeng		0	training	0	World Vision International - Cambodia		<input type="checkbox"/>
60603	Klaeng		0	time	0	World Vision International - Cambodia		<input type="checkbox"/>
60603	Klaeng		0	time	0	World Vision International - Cambodia		<input type="checkbox"/>
NREM								
60603	Klaeng	Forestry law education	0	training	0	Forest administration	PIF	✓
60603	Klaeng	Fishery community formulation	4	village	0	Cambodian Women Support Organization		<input type="checkbox"/>

Commune GIS	Commune	Temporary Agreements				Supporter	Funding Source	Listed in CIP befor DIW
		Project Name	Quantity	Unit	Est.Cost (K.Riels)			
Administration and Security								
60603	Klaeng		0	time	0	World Vision International - Cambodia		<input type="checkbox"/>
60603	Klaeng		0	person	0	World Vision International - Cambodia		<input type="checkbox"/>
60603	Klaeng		0	training	0	World Vision International - Cambodia		<input type="checkbox"/>
Gender								
60603	Klaeng	Law against trafficking dissemination	5	training	1599	Department of Social and Veteran Affairs and Youth Rehabilitation	PIF	✓
60603	Klaeng		0	training	0	World Vision International - Cambodia		<input type="checkbox"/>
60603	Klaeng		0	time	0	World Vision International - Cambodia		<input type="checkbox"/>
60603	Klaeng	Law against domestic violence dissemination	6	training	0	Cambodian Women Support Organization		✓

8.2.4 Temporary Agreements for 2009 as per DIW 2008 for Commune: Mean Rith

Commune GIS	Commune	Temporary Agreements				Supporter	Funding Source	Listed in CIP befor DIW
		Project Name	Quantity	Unit	Est.Cost (K.Riels)			
Economic								
60604	Mean Rith	Funding support to saving group	0	Team	0			<input type="checkbox"/>
60604	Mean Rith	Vegetable seed provision for household	60	package	0	Minority Organisation for Development Economic		<input type="checkbox"/>
60604	Mean Rith	Agriculture technique training	5	person	0	Minority Organisation for Development Economic		<input type="checkbox"/>
60604	Mean Rith	Credit committee training	4	training	0	Minority Organisation for Development Economic		<input type="checkbox"/>
60604	Mean Rith	Credit project	1	village	0	Minority Organisation for Development Economic		<input type="checkbox"/>

District Data Book 2009: Development Plans and Projects

Commune GIS	Commune	Temporary Agreements				Supporter	Funding Source	Listed in CIP befor DIW
		Project Name	Quantity	Unit	Est.Cost (K.Riels)			
60604	Mean Rith	Rice field demonstration	10	Kg	0	Minority Organisation for Development Economic		✓
60604	Mean Rith	Rice bank old member strengthening	0	Team	0	Minority Organisation for Development Economic		□
60604	Mean Rith	Rice field demonstration	0	family	0			✓
60604	Mean Rith	Compost fertilizer training	2	hoc	0	Minority Organisation for Development Economic		✓
Social								
60604	Mean Rith	Sanitation education	7	village	0	Department of Health		✓
60604	Mean Rith	TBA training	1	training	0	Minority Organisation for Development Economic		□
60604	Mean Rith	HIV/AIDS awareness training	1	training	0	Minority Organisation for Development Economic		□
60604	Mean Rith	Primary health care education	400	person	0	Minority Organisation for Development Economic		□
60604	Mean Rith	Wells construction	0	well	0			✓
NREM								
60604	Mean Rith	Fishery law education	2	village	0	Cambodian Women Support Organization		✓
Gender								
60604	Mean Rith	Law against domestic violence dissemination	0	training	0	Cambodian Women Support Organization		✓

8.2.5 Temporary Agreements for 2009 as per DIW 2008 for Commune: Mean Chey

Commune GIS	Commune	Temporary Agreements				Supporter	Funding Source	Listed in CIP befor DIW
		Project Name	Quantity	Unit	Est.Cost (K.Riels)			
Economic								
60605	Mean Chey		0	training	0	World Vision International - Cambodia		☐
60605	Mean Chey	Animal vaccination request	0	Head	0	World Vision International - Cambodia		✓

District Data Book 2009: Development Plans and Projects

Commune GIS	Commune	Temporary Agreements				Supporter	Funding Source	Listed in CIP befor DIW
		Project Name	Quantity	Unit	Est.Cost (K.Riels)			
60605	Mean Chey	Livelihood improvement group study tour	0	Team	0	World Vision International - Cambodia		<input type="checkbox"/>
60605	Mean Chey	Fish fingerlings supply	0	Head	0	World Vision International - Cambodia		<input type="checkbox"/>
60605	Mean Chey	Pig supply for raising	0	Head	0	World Vision International - Cambodia		<input type="checkbox"/>
60605	Mean Chey	Chicken raising supply	0	Head	0	World Vision International - Cambodia		<input type="checkbox"/>
60605	Mean Chey		0	family	0	World Vision International - Cambodia		<input type="checkbox"/>
60605	Mean Chey	Livestock supply for raising to village vet	0	Head	0	World Vision International - Cambodia		<input type="checkbox"/>
60605	Mean Chey	Village vet training	0	training	0	World Vision International - Cambodia		<input type="checkbox"/>
60605	Mean Chey		0	time	0	World Vision International - Cambodia		<input type="checkbox"/>
60605	Mean Chey	Materials support to community development center	0	Team	0	World Vision International - Cambodia		<input type="checkbox"/>
60605	Mean Chey		0	place	0	World Vision International - Cambodia		<input type="checkbox"/>
60605	Mean Chey	Livelihood improvement reflection workshop	0	time	0	World Vision International - Cambodia		<input type="checkbox"/>
60605	Mean Chey	Mixed farming system training	0	training	0	World Vision International - Cambodia		✓
60605	Mean Chey	Vegetable growing training	0	training	0	World Vision International - Cambodia		✓
60605	Mean Chey		0	training	0	World Vision International - Cambodia		<input type="checkbox"/>
60605	Mean Chey		0	time	0	World Vision International - Cambodia		<input type="checkbox"/>
60605	Mean Chey		0	family	0	World Vision International - Cambodia		<input type="checkbox"/>
60605	Mean Chey		0	place	0	World Vision International - Cambodia		<input type="checkbox"/>

District Data Book 2009: Development Plans and Projects

Commune GIS	Commune	Temporary Agreements				Supporter	Funding Source	Listed in CIP befor DIW
		Project Name	Quantity	Unit	Est.Cost (K.Riels)			
60605	Mean Chey	Earth road construction	4900	m	0	Department of Rural Development		✓
Social								
60605	Mean Chey		0	training	0	World Vision International - Cambodia		<input type="checkbox"/>
60605	Mean Chey		0	schools	0	World Vision International - Cambodia		✓
60605	Mean Chey		0	well	0	World Vision International - Cambodia		✓
60605	Mean Chey	Family planning	11	training	0	Department of Health		✓
60605	Mean Chey	Children immunization provision	11	village	0	Department of Health		✓
60605	Mean Chey		0	class	0	World Vision International - Cambodia		✓
60605	Mean Chey		0	time	0	World Vision International - Cambodia		<input type="checkbox"/>
60605	Mean Chey		0	time	0	World Vision International - Cambodia		<input type="checkbox"/>
60605	Mean Chey		0	set	0	World Vision International - Cambodia		<input type="checkbox"/>
60605	Mean Chey		0	time	0	World Vision International - Cambodia		<input type="checkbox"/>
60605	Mean Chey		0	person	0	World Vision International - Cambodia		<input type="checkbox"/>
60605	Mean Chey	Safe birth delivery training	0	place	0	World Vision International - Cambodia		<input type="checkbox"/>
60605	Mean Chey		0	time	0	World Vision International - Cambodia		<input type="checkbox"/>
60605	Mean Chey		0	time	0	World Vision International - Cambodia		<input type="checkbox"/>
60605	Mean Chey		0	training	0	World Vision International - Cambodia		<input type="checkbox"/>
60605	Mean		0	toilet	0	World Vision International -		<input type="checkbox"/>

District Data Book 2009: Development Plans and Projects

Commune GIS	Commune	Temporary Agreements				Supporter	Funding Source	Listed in CIP before DIW
		Project Name	Quantity	Unit	Est.Cost (K.Riels)			
	Chey					Cambodia		
60605	Mean Chey		0	time	0	World Vision International - Cambodia		<input type="checkbox"/>
60605	Mean Chey		0	training	0	World Vision International - Cambodia		<input type="checkbox"/>
60605	Mean Chey		0	building	0	World Vision International - Cambodia		<input type="checkbox"/>
60605	Mean Chey		0	time	0	World Vision International - Cambodia		<input type="checkbox"/>
60605	Mean Chey		0	time	0	World Vision International - Cambodia		<input type="checkbox"/>
60605	Mean Chey		0	place	0	World Vision International - Cambodia		<input type="checkbox"/>
Administration and Security								
60605	Mean Chey		0	well	0	World Vision International - Cambodia		✓
60605	Mean Chey		0	training	0	World Vision International - Cambodia		<input type="checkbox"/>
Gender								
60605	Mean Chey		0	training	0	World Vision International - Cambodia		<input type="checkbox"/>
60605	Mean Chey		0	time	0	World Vision International - Cambodia		<input type="checkbox"/>
60605	Mean Chey	Law against domestic violence dissemination	0	training	0	Department of Culture and Fine Arts	PIF	✓

8.2.6 Temporary Agreements for 2009 as per DIW 2008 for Commune: Ngan

Commune GIS	Commune	Temporary Agreements				Supporter	Funding Source	Listed in CIP befor DIW
		Project Name	Quantity	Unit	Est.Cost (K.Riels)			
Economic								
60606	Ngan	Compost fertilizer training	8	hoc	0	Minority Organisation for		✓

District Data Book 2009: Development Plans and Projects

Commune GIS	Commune	Temporary Agreements				Supporter	Funding Source	Listed in CIP before DIW
		Project Name	Quantity	Unit	Est.Cost (K.Riels)			
						Development Economic		
60606	Ngan	Rice bank member strengthening	6	village	0	Minority Organisation for Development Economic		<input type="checkbox"/>
60606	Ngan	Agriculture technique training	1	training	0	Minority Organisation for Development Economic		<input type="checkbox"/>
60606	Ngan	Credit committee training	4	training	0	Minority Organisation for Development Economic		<input type="checkbox"/>
60606	Ngan	Credit and saving project	5	village	0	Minority Organisation for Development Economic		<input type="checkbox"/>
60606	Ngan	Poverty reduction project	28	person	0	Minority Organisation for Development Economic		<input type="checkbox"/>
60606	Ngan	Rice cultivation technique training	90	package	0	Minority Organisation for Development Economic		✓
60606	Ngan	Earth road construction	1	Line	0	World Food Programme		✓
60606	Ngan	Rice seed request	10	Kg	0	Minority Organisation for Development Economic		✓
Social								
60606	Ngan	Primary health care education	7	village	0	Minority Organisation for Development Economic		<input type="checkbox"/>
60606	Ngan	Children immunization provision	13	village	0	Department of Health		✓
60606	Ngan	HIV/AIDS awareness training	1	training	0	Minority Organisation for Development Economic		<input type="checkbox"/>
60606	Ngan	TBA training	1	training	0	Minority Organisation for Development Economic		<input type="checkbox"/>
NREM								
60606	Ngan	Environmental awareness and law education	1	day	754.4	Department of Environment	PIF	✓
Administration and Security								
60606	Ngan	Decentralization education program	2	training	0	Minority Organisation for Development Economic		<input type="checkbox"/>
Gender								
60606	Ngan	Law against domestic violence dissemination	9	training	3013.5	Department of Social and Veteran Affairs and Youth Rehabilitation	PIF	✓

Commune GIS	Commune	Temporary Agreements				Supporter	Funding Source	Listed in CIP before DIW
		Project Name	Quantity	Unit	Est.Cost (K.Riels)			
60606	Ngan	Rescue children & women from violence	9	training	3013.5	Department of Social and Veteran Affairs and Youth Rehabilitation	PIF	✓

8.2.7 Temporary Agreements for 2009 as per DIW 2008 for Commune: Sandan

Commune GIS	Commune	Temporary Agreements				Supporter	Funding Source	Listed in CIP before DIW
		Project Name	Quantity	Unit	Est.Cost (K.Riels)			
Economic								
60607	Sandan	Poverty reduction project for disabled people and widows	20	person	4920	Minority Organisation for Development Economic		<input type="checkbox"/>
60607	Sandan	Rice bank old member strengthening	8	village	0	Minority Organisation for Development Economic		<input type="checkbox"/>
60607	Sandan	Compost making materials support	4	hoc	0	Minority Organisation for Development Economic		<input type="checkbox"/>
60607	Sandan	Vegetable seed supply	65	package	0	Minority Organisation for Development Economic		<input type="checkbox"/>
60607	Sandan	Agriculture technique training	5	person	0	Minority Organisation for Development Economic		<input type="checkbox"/>
60607	Sandan	Credit committee training	1	training	0	Minority Organisation for Development Economic		<input type="checkbox"/>
60607	Sandan	Rice seed request	50	Kg	0	Adventis Development and Relief Agency		✓
Social								
60607	Sandan	Mosquito nets distribution/treatment	0	mosqui-net	0	Department of Health		✓
60607	Sandan	Children and women vaccination	13	village	0	Department of Health		✓
60607	Sandan	Antenatal care	13	training	0	Department of Health		✓
60607	Sandan	Wells construction	2	well	1640			<input type="checkbox"/>
60607	Sandan	TBA training	1	training	0	Minority Organisation for Development Economic		<input type="checkbox"/>
60607	Sandan	Primary health care education	13	village	0	Minority Organisation for Development Economic		<input type="checkbox"/>

Commune GIS	Commune	Temporary Agreements				Supporter	Funding Source	Listed in CIP before DIW
		Project Name	Quantity	Unit	Est.Cost (K.Riels)			
60607	Sandan	Antenatal care	1	day	1254.6	Department of Health	PIF	✓
60607	Sandan	HIV/AIDS awareness training	1	training	0	Minority Organisation for Development Economic		□
NREM								
60607	Sandan	Forestry law education	0	training	0			✓
60607	Sandan	Forestry law education	3	Forestry Community	6150	Forest administration	PIF	✓
Administration and Security								
60607	Sandan	Decentralization education program	2	training	0	Minority Organisation for Development Economic		□

8.2.8 Temporary Agreements for 2009 as per DIW 2008 for Commune: Sochet

Commune GIS	Commune	Temporary Agreements				Supporter	Funding Source	Listed in CIP befor DIW
		Project Name	Quantity	Unit	Est.Cost (K.Riels)			
Social								
60608	Sochet	Children and women vaccination	7	village	0	Department of Health		✓

8.2.9 Temporary Agreements for 2009 as per DIW 2008 for Commune: Tum Ring

Commune GIS	Commune	Temporary Agreements				Supporter	Funding Source	Listed in CIP befor DIW
		Project Name	Quantity	Unit	Est.Cost (K.Riels)			
Social								
60609	Tum Ring	Mosquito nets distribution/treatment	0	mosqui- net	0	Department of Health		✓

Source: CDPD, District Level Detail TA resulting from DIW

8.3 Outputs, estimated and actual costs of C/S Fund Projects between 2005 and 2008, by Commune

Commune	Project Type	Budget Year	Output		Quantity	Unit	Unit Cost MR	
			Description	Type			Estimate	Actual
Chheu Teal	Rural Transport	2005	Laterite road	Upgrade	0.865	Km	19.16	24.19
Chheu Teal	Rural Transport	2005	Double pipe culvert	New	1	Place	5.76	24.19
Chheu Teal	Rural Transport	2006	Laterite road	Repair	1.798	Km	34.89	34.52
Chheu Teal	Rural Transport	2007	Laterite road	Upgrade	1.276	Km	24.97	37.51
Chheu Teal	Rural Transport	2007	Single pipe culvert	New	2	Place	6.80	37.51
Chheu Teal	Rural Transport	2008	Laterite road	Repair	0.54	Km	34.05	33.93
Dang Kambet	Rural Transport	2005	Single pipe culvert	New	2	Place	3.79	17.96
Dang Kambet	Rural Transport	2005	Laterite road	Upgrade	0.69	Km	17.75	17.96
Dang Kambet	Rural Transport	2006	Laterite road	Repair	1.47	Km	25.70	25.42
Dang Kambet	Rural Transport	2007		Repair	0		0	30.0146
Dang Kambet	Rural Transport	2008	Single pipe culvert	New	1	Place	4.27	56.02
Dang Kambet	Rural Transport	2008	Laterite road	Upgrade	0.961	Km	51.63	56.02
Klaeng	Rural Transport	2005	Laterite road	Upgrade	0.7	Km	23.71	23.15
Klaeng	Rural Transport	2006	Laterite road	Upgrade	0.55	Km	26.20	25.90
Klaeng	Rural Transport	2007	Laterite road	Upgrade	0.815	Km	25.41	26.88
Klaeng	Rural Transport	2008	Laterite road	Upgrade	0.759	Km	29.71	29.76
Mean Rith	Rural Transport	2005	Laterite road	Upgrade	0.79	Km	24.73	24.43
Mean Rith	Rural Transport	2006	Laterite road	Upgrade	0.915	Km	29.54	29.36
Mean Rith	Rural Transport	2007	Single pipe culvert	New	1	Place	3.11	32.04
Mean Rith	Rural Transport	2007	Laterite road	Upgrade	0.881	Km	22.75	32.04
Mean Rith	Rural Transport	2008	Laterite road	Upgrade	0.552	Km	27.22	29.36
Mean Rith	Rural Transport	2008	Single pipe culvert	New	1	Place	2.17	29.36
Mean Chey	Irrigation	2005	Earth dam	New	0.15	Km	25.73	26.89
Mean Chey	Irrigation	2005	Canal	New	0.36	Km	2.21	26.89
Mean Chey	Rural Transport	2006	Earth road	Repair	2.58	Km	28.74	28.49
Mean Chey	Rural Transport	2007		Repair	0		0	29.8671
Mean Chey	Rural Transport	2008	Laterite road	Upgrade	0.976	Km	62.51	60.64
Ngan	Rural Transport	2005	Earth road	Repair	0.8	Km	23.80	31.59
Ngan	Rural Transport	2005	Single pipe culvert	New	2	Place	8.64	31.59
Ngan	Irrigation	2006	Single cell box culvert with gate	Repair	1	Place	6.32	32.71
Ngan	Irrigation	2006	Single pipe Culvert with gate	New	1	Place	9.68	32.71
Ngan	Irrigation	2006	Earth dam	New	0.75	Km	17.93	32.71
Ngan	Rural Transport	2007	Laterite road	Upgrade	0.55	Km	27.62	32.00

Commune	Project Type	Budget Year	Output		Quantity	Unit	Unit Cost MR	
			Description	Type			Estimate	Actual
Ngan	Rural Transport	2007	Single pipe culvert	New	1	Place	2.86	32.00
Ngan	Rural Transport	2008	Single pipe culvert	New	1	Place	3.09	33.92
Ngan	Rural Transport	2008	Laterite road	Upgrade	0.56	Km	30.83	33.92
Sandan	Rural Transport	2005	Laterite road	Upgrade	0.65	Km	23.77	29.85
Sandan	Rural Transport	2005	Double pipe culvert	New	1	Place	6.67	29.85
Sandan	Rural Transport	2006	Laterite road	Repair	1.23	Km	34.32	31.90
Sandan	Rural Transport	2007	Laterite road	Upgrade	0.197	Km	19.44	34.40
Sandan	Rural Transport	2007	Single pipe culvert	New	1	Place	13.69	34.40
Sandan	Rural Transport	2008	Laterite road	New	0.649	Km	29.94	34.27
Sandan	Rural Transport	2008	Single pipe culvert	New	1	Place	4.25	34.27
Sochet	Rural Transport	2005	Earth road	Repair	0.716	Km	22.20	23.01
Sochet	Rural Transport	2006	Single pipe culvert	New	1	Place	4.18	25.89
Sochet	Rural Transport	2006	Laterite road	Repair	0.63	Km	22.30	25.89
Sochet	Rural Transport	2007		Repair	0		0	26.794
Sochet	Rural Transport	2008	Laterite road	Upgrade	1.078	Km	53.28	53.14
Tum Ring	Rural Domestic Water Supplies	2005	Ring well	New	13	Place	22.28	22.44
Tum Ring	Rural Domestic Water Supplies	2006	Ring well	New	16	Place	26.19	25.60
Tum Ring	Rural Domestic Water Supplies	2007	Ring well	New	15	Place	29.61	29.66
Tum Ring	Rural Domestic Water Supplies	2008	Ring well	New	11	Place	29.38	29.21

Source: PID

8.4 Total Expenditure on C/S Fund Projects by sector and commune between 2005 and 2008

Sector	Total Cost in Million Riels								
	Chheu Teal	Dang Kambet	Klaeng	Mean Rith	Mean Chey	Ngan	Sandan	Sochet	Tum Ring
Irrigation					26.89	32.71			
Rural Domestic Water Supplies									106.91
Rural Transport	130.16	129.42	105.69	115.19	118.99	97.50	130.42	128.83	

Source: PID

8.5 Actual 2009 C/S Fund projects by Commune

Commune	Project Type	Project Output		Quantity	Unit	Fund Source (Riels)		
		Description	Type			Total	C/S	Local Contribution
Chheu Teal	Rural Transport	Laterite road	Upgrade	0.9	km	44,796,150	44,296,150	500,000
Dang Kambet	Rural Transport	Laterite road	Repair	0.1	km	36,013,600	35,713,600	300,000
Dang Kambet	Rural Transport	Single cell box culvert 3.0m x 2.0m	New	1	Place	36,013,600	35,713,600	300,000
Klaeng	Rural Transport	Laterite road	Upgrade	0.589	km	35,942,050	35,442,050	500,000
Mean Rith	Rural Transport	Laterite road	Repair	0.785	km	40,202,900	39,802,900	400,000
Mean Rith	Rural Transport	Laterite road	Repair	0.785	km	39,802,900	39,402,900	400,000
Mean Chey	Rural Transport	Earth road	Repair	0.73	km	41,270,600	40,770,600	500,000
Ngan	Rural Transport	Laterite road	Upgrade	0.75	km	44,246,500	43,746,500	500,000
Ngan	Rural Transport	Single pipe culvert 0.6m diameter	New	1	Place	44,246,500	43,746,500	500,000
Sandan	Rural Transport	Laterite road	New	0.5	km	46,699,850	46,099,850	600,000
Sandan	Rural Transport	Double pipe culvert 1.0m diameter	New	1	Place	46,699,850	46,099,850	600,000
Sandan	Rural Transport	Single pipe culvert 0.8m diameter	New	1	Place	46,699,850	46,099,850	600,000
Sandan	Irrigation	Earth dam	Repair	0.17	km	21,600,000	21,600,000	0
Sochet	Rural Transport	Laterite road	Repair	0.8	km	66,406,900	65,826,900	580,000
Tum Ring	Rural Domestic Water Supplies	Ring well (general)	New	1	Place	67,648,600	67,148,600	500,000
Tum Ring	Rural Domestic Water Supplies	Ring well (general)	New	2	Place	67,648,600	67,148,600	500,000
Tum Ring	Rural Domestic Water Supplies	Single pipe culvert 0.6m diameter	New	1	Place	67,648,600	67,148,600	500,000
Tum Ring	Rural Domestic Water Supplies	Single pipe culvert 0.6m diameter	New	2	Place	67,648,600	67,148,600	500,000
Tum Ring	Rural Domestic Water Supplies	Ring well (general)	New	2	Place	67,648,600	67,148,600	500,000
Tum Ring	Rural Domestic Water Supplies	Ring well (general)	New	2	Place	67,648,600	67,148,600	500,000
Tum Ring	Rural Domestic Water Supplies	Ring well (general)	New	2	Place	67,648,600	67,148,600	500,000
Tum Ring	Rural Domestic Water Supplies	Ring well (general)	New	2	Place	67,648,600	67,148,600	500,000

Source: PID

9 District level Projects from 2006 to 2009

District Initiative Projects (DIPs) are funded by Danida, DFID and PSDD (UNDP, DFID and SIDA).

Funding for 2006-2008

Between 2006 and 2008 there were 14 provinces funded by PSDD and 10 by Danida and DFID. The list of provinces and who funded these is below

Danida and DFID funded DIPs:

Kampong Cham	Kampong Speu	Koh Kong	Kratie	Monduliri
Pursat	Ratanakiri	Siem Reap	Sihanoukville	Kep

PSDD funded DIPs:

Banteay Meanchey	Battambang	Kampong Chhnang	Kandal	Phnom Penh
Prey Veng	Svay Rieng	Takeo	Kampong Thom	Preah Vihear
Stung Treng	Kampot	Oddar Meanchey	Pailin	

Funding for 2009

In 2009 there was a change to the number of provinces funded by the two streams. Danida and DFID were still funding the same 10 provinces they had been funding the previous three years, but two more provinces were added *Kampong Thom and Kampot*. Now PSDD funds 12 provinces and Danida and DFID fund 12.

9.1 District Initiative Infrastructure Projects from 2006 to 2009

9.1.1 District Initiative Infrastructure Projects for 2006 to 2008

No District Initiative Infrastructure Projects were implemented in this district for 2006-2008

9.1.2 District Initiative Infrastructure Projects in 2009

No District Initiative Infrastructure Projects have been implemented in this district for 2009

9.2 District Initiative Service Projects from 2006 to 2009

9.2.1 District Initiative Service Projects for 2006 to 2008

No District Initiative Service Projects were implemented in this district for 2006-2008

9.2.2 District Initiative Service Projects in 2009

Project Name	Sector	Implementing Agency	Budget	Project outputs/ capacities	No. of Beneficiaries		Progress	Remarks on Issues of Progress
					Total	Female		
Training and demo on compost and rice production	AGR	District Agriculture	\$1,486.50	42 course and 1440 Kg of seed	1,080	648	60%	Sub-contracts signed on March 12, 2009 and start implementing
Training on mixed crops production and provide seeds	AGR	District Agriculture	\$1,492.50	24 Courses	1,080	648	20%	Completed for farmers selecting and group forming. And the training being conducted 2nd week of Jul 09 .
Training on fish raising and provide fish breeding	AGR	Agriculture Office	\$1,075.00	12 courses and 6000 fish breeding	300	180	20%	Already selected farmer and formed the group. And the trainig being conducted in 3rd week of Jul 09.
Training on chicken raising and demonstration	AGR	District Agriculture	\$1,159.00	27 courses	900	540	20%	Already selected and formed the farmer group. And on processing chicken procurement while the training being conducted in the 4th week of Jul 09.
Training on pig raising	AGR	District Agriculture	\$1,547.00	7 courses	210	126	20%	Already selected and formed the farmer group and being to provide training.

9.3 Inter Commune Council Projects in 2008 and 2009

9.3.1 ICC Projects in 2008

No ICC projects in this district at this time

9.3.2 ICC Projects in 2009

No ICC projects in this district at this time

Source: ICC project, Ministry of Interior (DoLA), -UNDP project for Local Governance – DDLG

9.4 Other Projects in 2008 and 2009

9.4.1 RPRP

There are no RPRP projects being implemented in this district or province at this time. The RPRP is only being implemented in Svay Rieng and Prey Veng

9.4.1.1 RPRP Projects from 2006 to 2008

No RPRP projects in this district at this time

9.4.1.2 RPRP Projects in 2009

No RPRP projects in this district at this time

9.4.2 Seth Korma

9.4.2.1 Seth Koma 2007

District	# Comm.	# Vil	CCWC Operational cost	International Events	CPS		Social Services	Total cost
					# teacher	Budget		
Baray	18	181	\$7,956	\$1,800	69	\$4,658	0	\$14,414
Kampong Svay	9	82	\$3,732	\$900	79	\$5,333	0	\$9,965
Stueng Saen	11	55	\$3,694	\$1,100	15	\$1,013	0	\$5,807
Prasat Sambour	5	66	\$1,985	\$500	0	\$0	0	\$2,485
Santuk	9	72	\$3,329	\$900	13	\$878	0	\$5,107
Total	52	456	\$20,696	\$5,200	176	\$11,881	0	\$37,778

Source: UNICEF

9.4.2.2 Seth Koma 2008

District	Commune	Monthly Incentive for CPS Teacher	CCWC monthly meetings at commune level	CCWC quarterly meeting	Monitoring the activities of CPS classes, violence, enrolment and immunity	Monitoring the activities relating to Water, Sanitation and Hygiene	Mission to province	CCWC Ope. costs	Organizing international day involved women and children	Building CPS shelter (4 classes)	Total
Kampong Svay	Kampong Svay	\$540	\$24	\$36	\$180	\$0	\$10	\$90	\$30	\$2,000	\$2,910
	Nipech	\$541	\$48	\$40	\$288	\$0	\$20	\$144	\$60	\$0	\$1,141
	San Kor	\$405	\$24	\$40	\$180	\$135	\$10	\$90	\$30	\$0	\$914
	Tbaeng	\$1,080	\$24	\$42	\$180	\$0	\$10	\$90	\$30	\$2,000	\$3,456
	Trapeang Ruessei	\$1,215	\$24	\$46	\$180	\$135	\$10	\$90	\$30	\$2,000	\$3,730
Total	5	\$3,781	\$144	\$204	\$1,008	\$270	\$60	\$504	\$180	\$6,000	\$12,151

Source: UNICEF

9.4.2.3 Seth Koma 2009

District	# Comm	Ope. cost	CPS		PE	CLTS		Com. youth	Health intervention	Social service mapping	Descriptionary budget	Total
			CPS allowance	M&E	M&E	Monthly meetings	M&E	Monthly meetings				
Baray	18	\$3,894	\$4,320	\$756	\$486	\$3,150	\$1,512	\$759	\$1,400	\$437	\$1,000	\$17,714
Santuk	9	\$1,978	\$878	\$216	\$0	\$1,330	\$576	\$385	\$400	\$0	\$0	\$5,763
Kampong Svay	9	\$2,304	\$4,523	\$792	\$180	\$0	\$0	\$803	\$400	\$0	\$0	\$9,002
Prasat Sambour	5	\$1,210	\$473	\$72	\$0	\$0	\$0	\$198	\$600	\$0	\$0	\$2,553
Stueng Saen	11	\$2,222	\$1,148	\$216	\$54	\$390	\$360	\$396	\$1,200	\$182	\$1,000	\$7,168
Stoung	13	\$3,248	\$0	\$0	\$0	\$0	\$0	\$0	\$1,000	\$0	\$0	\$4,248
Prasat Ballangk	7	\$1,658	\$540	\$72	\$0	\$0	\$0	\$0	\$400	\$0	\$0	\$2,670
Sandan	9	\$2,142	\$0	\$0	\$0	\$0	\$0	\$0	\$400	\$0	\$0	\$2,542
Total	81	\$18,656	\$11,882	\$2,124	\$720	\$4,870	\$2,448	\$2,541	\$5,800	\$619	\$2,000	\$51,660
Contingency												1,940.00
Sub-total WATSAN						4,870.00	2,448.00					7,318.00
Project 1 budget		18,656.00	11,882.00	2,124.00	720.00			2,541.00	5,800.00	619.00	2,000.00	44,342.00
Grand Total												53,600.00

Source: UNICEF

SECTION D: SERVICES AND ORGANIZATIONS

10 Infrastructure

10.1 Length of and Expenditure on Roads in 2008, by District

Roads	KPT	Baray	Kampong Svay	Stoeung Saen	Prasat Balangk	Prasat Sambour	Sandan	Santuk	Stoung
Length of paved road in the district (m)	1,279	325,017	109,384	106,003	83,794	96,464	275,702	186,979	95,904
Length of unpaved roads in the district (m)	818	79,604	202,973	64,240	90,303	153,095	65,976	59,387	102,085
Amount spent on construction of roads in 2008 (\$)	n/a	n/a	n/a	0	n/a	n/a	n/a	n/a	n/a
Amount spent on repair and rehabilitation of roads in 2008 (\$)	37,038	n/a	n/a	37,038	n/a	n/a	n/a	n/a	n/a

Note 1: Please note that these data are not necessarily complete or correct. The data are derived from government agencies at provincial and district level which used different recording systems, did not always have complete data or were, sometimes, less than willing to share their data.

Note 2: Please be aware that these data are incomplete due to the fact that the amounts for the construction, repair and rehabilitation recorded reflect only funds provided by the government, not the contributions by any other parties.

10.2 Scale of and Expenditure on Irrigation in 2008, by District

Irrigation	KPT	Baray	Kampong Svay	Stoeung Saen	Prasat Balangk	Prasat Sambour	Sandan	Santuk	Stoung
Number of irrigation schemes operating in 2008	3	1	0	0	0	0	0	1	1
Total nr of hectares under irrigation in dry season 2008	18,200	1,228	3,296	702	265	876	425	424	10,985
Total funds spent in 2008 on construction of irrigation systems (\$)	3,024,750	3,000,000	n/a	24,750	n/a	n/a	n/a	n/a	n/a
Total funds spent in 2008 on rehabilitation/repair of irrigation systems (\$)	24,950	n/a	n/a	n/a	n/a	n/a	n/a	n/a	24,950
Total funds spent in 2008 on operation and maintenance (\$)	n/a	n/a	n/a	n/a	n/a	n/a	n/a	n/a	n/a

Note 1: Please note that these data are not necessarily complete or correct. The data are derived from government agencies at provincial and district level which used different recording systems, did not always have complete data or were, sometimes, less than willing to share their data.

Note 2: Please be aware that the data above are incomplete as these only reflect funds provided by the government, not the contributions by farmers or other parties.

10.3 Power Supply in 2008, by District

Electricity	KPT	Baray	Kampong Svay	Stoeung Saen	Prasat Balangk	Prasat Sambour	Sandan	Santuk	Stoung
Total number of electricity connections to households	11,659	3,715	192	4,541	171	148	509	1,217	1,166
Total number of electricity connections to agencies, companies, organizations	n/a	n/a	n/a	n/a	n/a	n/a	n/a	n/a	n/a
Total volume in KWh of electricity consumed last in 2008	3,189,000	1,304,000	20,000	1,600,000	20,000	20,000	60,000	40,000	125,000
Total amount collected from users for consumed electricity (\$)	n/a	n/a	n/a	n/a	n/a	n/a	n/a	n/a	n/a
Per capita electricity consumption in 2008 in Kwh	24	n/a	n/a	n/a	n/a	n/a	n/a	n/a	n/a

Note 1: Please note that these data are not necessarily complete or correct. The data are derived from government agencies at provincial and district level which used different recording systems, did not always have complete data or were, sometimes, less than willing to share their data.

Note 2: These data only record electricity provided by electricity companies and does not include homes powered by generators or batteries (for this information see Section B: General Profile, Part 1: General Information; table 1.3.1 and chart 1.3.4).

Note 3: In most provinces electricity is only provided through town-based networks

Note 4: Per capita consumption is calculated by dividing the total volume of electricity produced in 2008 by the number of people living in each district as per the 2008 census (for the provincial data it is calculated against the number of people living in the province)

11 Health Facilities

Please note that the Operational District (health) boundaries are different to the administrative district boundaries. Therefore the data provided here shows the facilities, staff, NGOs etc in each Operational District within the province NOT the administrative district.

Acronyms

Com Cov	Commune Covered	MW2	Secondary Midwives
CPA	Complementary Package of Activities	NU1	Primary Nurse
Dr	Doctor	NU2	Secondary Nurse
FDH	Former District Hospital	OD	Operational District
HC	Health Center	Others	Other Staff
HC (NB)	Health Center no building	PHD	Provincial Health Department
HP	Health Post	Pop 04-05	Population Covered 2004 or 2005
MA	Medical Assistant	RH	Referral Hospital
MPA	Minimum Package of Activities	Vil Cov	Village Covered
MW1	Primary Midwives	VIL-HC	Distance from Village to Health Center

11.1 Health Facilities in the Province, by Operational District

Kompong Thom	OD	RH	HC	HP
Baray and Santuk	1	1	19	
Kampong Thom	1	1	21	
Stong	1		10	
Total	3	2	50	0

11.2 Health Facilities and Staff in the province, by Operational District

This table shows health facilities, staff and coverage of health facilities in each operational district.

No	Facility Name	Type	Class	Dr	Ma	Nu2	Nu1	Mw2	Mw1	Others	Com Cov	Vil Cov	Pop. 04-05
Baray and Santuk													
1	Ballangk	HC	MPA	0	0	1	0	1	2	2	1	12	17,075
2	Baray	HC	MPA	0	0	1	2	0	3	1	1	12	13,595
3	Boeng	HC	MPA	0	0	0	2	0	1	4	1	5	8,945
4	Chaeung Daeung	HC	MPA	0	0	0	3	1	2	1	1	10	10,972
5	Chhouk Khsach	HC	MPA	0	0	1	0	0	1	3	1	14	14,294
6	Chong Doung	HC	MPA	0	0	2	0	1	1	1	1	8	11,936

District Data Book 2009: Services and Organizations

No	Facility Name	Type	Class	Dr	Ma	Nu2	Nu1	Mw2	Mw1	Others	Com Cov	Vil Cov	Pop. 04-05
7	Kampong Thma	HC	MPA	0	0	1	0	1	1	3	1	10	7,819
8	Krava	HC	MPA	0	0	1	2	0	5	1	5	24	22,810
9	Kreul	HC	MPA	1	0	0	4	0	1	0	2	16	12,664
10	L'ak	HC	MPA	0	0	0	2	0	2	1	3	13	9,886
11	Prasat	HC	MPA	0	0	2	1	0	1	1	1	10	9,367
12	Prataong	HC	MPA	0	0	0	1	0	3	1	3	15	11,438
13	Srah Banteay	HC	MPA	1	0	2	0	2	0	1	1	8	9,384
14	Sralau	HC	MPA	1	0	0	2	0	0	0	2	18	13,711
15	Tang Kouk	HC	MPA	1	0	2	1	1	2	1	2	15	15,242
16	Tang Krasaing	FDH	CPA+MPA	1	0	3	4	4	4	10	2	14	17,775
17	Ti Pou	HC	MPA	0	0	2	2	0	1	0	1	11	7,700
18	Tnaot Chum	HC	MPA	0	0	1	5	0	1	1	2	12	10,573
Total:				5	0	19	31	11	31	32	31	227	225,186
Kampong Thom													
1	Treal	HC	MPA	0	0	1	2	1	1	1	1	18	13,929
2	Achar Leak	HC	MPA	0	1	3	0	1	1	0	3	6	15,463
3	Chey	HC	MPA	0	0	1	2	0	1	4	3	15	10,225
4	Chheu Teal	HC	MPA	0	0	1	3	0	2	2	2	22	14,689
5	Chhouk	HC	MPA	0	0	1	2	0	3	2	2	24	13,038
6	Damrei Choan Khla	HC	MPA	0	0	2	3	1	1	0	2	6	12,916
7	Damrei Slab	HC	MPA	0	0	0	2	0	2	2	3	13	10,380
8	Kakaoh	HC	MPA	0	0	0	4	0	1	2	1	10	10,574
9	Kampong Kou	HC	MPA	0	0	0	5	1	0	1	2	8	9,392
10	Kampong Svay	HC	MPA	0	0	1	2	0	1	2	1	10	12,227
11	Kampong Thom	HC	MPA	0	2	2	3	2	3	0	1	4	2,476
12	Kouk Nguon	HC	MPA	0	0	3	0	1	2	2	3	11	11,205
13	Mean Chey	HC	MPA	0	0	1	6	0	3	2	4	37	17,761
14	Prey Kuy	HC	MPA	0	0	1	3	0	1	1	3	11	9,332
15	Prey Pras	FDH	CPA+MPA	0	0	1	6	0	3	3	2	19	16,869
16	Sala Visai	FDH	CPA+MPA	1	0	1	3	1	1	0	2	21	14,563
17	Sambour	FDH	CPA+MPA	0	0	0	0	0	0	0	1	15	12,579
18	San Kor	HC	MPA	0	0	1	4	1	0	0	1	14	15,434
19	Sandan	FDH	CPA+MPA	0	0	1	11	2	4	8	4	32	16,329
20	Srayov	HC	MPA	0	0	1	4	0	2	1	1	10	12,895

No	Facility Name	Type	Class	Dr	Ma	Nu2	Nu1	Mw2	Mw1	Others	Com Cov	Vil Cov	Pop. 04-05
21	Tang Krasau	HC	MPA	0	0	1	6	0	1	1	2	16	11,432
Total:				1	3	23	71	11	33	34	44	322	263,708
Stong													
1	Tboung Krapeu	HC	MPA	0	0	1	2	0	1	1	2	8	11,796
2	Banteay Stoung	HC	MPA	0	0	1	2	0	2	0	1	2	1,058
3	Chamnar Kraom	HC	MPA	0	0	1	0	1	1	0	1	10	9,561
4	Chamnar Leu	HC(NB)	None	0	0	0	0	1	0	0	2	12	11,384
5	Daung	HC	MPA	0	0	2	0	0	1	0	3	21	15,127
6	Msar Krang	HC	MPA	0	0	3	0	1	0	0	2	16	10,657
7	Pralay	HC	MPA	0	0	3	0	0	3	1	2	22	18,656
8	Samdach Ov Kraya Sakream	HC	MPA	0	0	1	0	0	0	1	2	17	13,191
9	Samprouch	HC	MPA	0	0	2	1	0	2	0	1	17	10,372
10	Stoung	HC	MPA	0	0	1	2	1	1	1	2	13	16,696
Total:				0	0	15	7	4	11	4	18	138	118,498
Total All				6	3	57	109	26	75	70	93	687	607,392

Source: MEDiCAM – Infrastructure - (http://www.medicam-cambodia.org/hsi/health_system/srch/index.asp?cboLcn=6&cmdSearch=Search&cboCHName=&cboType=)

11.3 Deliveries in 2007 in the Province, by Operational District

OD	Deliveries	Deliveries at home		Deliveries	Total deliveries	Total deliveries
	at HC	By Health Staff	ByTBAs	at RH	by Health Staff	by health staff and TBAs
Baray and Santuk	213	822	2386	141	1176	3562
Kampong Thom	231	682	2907	536	1449	4356
Stong	38	751	1764	83	872	2636
<i>Sub-total</i>	<i>482</i>	<i>2255</i>	<i>7057</i>	<i>760</i>	<i>3497</i>	<i>10554</i>

Source: MoH, Annual Statistics 2007

12 Education³

12.1 Schools, Classes, Students, Staff, for all levels, for 2007/2008 by District

District	Number of Schools	Disadv. Schools	Number of Classes	Classes in Pagoda	Enrollment		Repeaters		Teaching Staff		Non-Teaching Staff		Total Staff	
					Total	Girl	Total	Girl	Total	Female	Total	Female	Total	Female
Baray	119	2	1,064	10	44,276	21,539	3,268	1,422	984	440	170	24	1,154	464
Kampong Svay	85	1	551	0	20,429	9,934	1,520	651	417	141	85	17	502	158
Prasat Balaing	44	0	256	0	10,121	5,100	1,115	524	158	38	19	4	177	42
Prasat Sambo	56	0	322	0	11,219	5,326	858	398	314	96	63	12	377	108
Sandann	58	8	300	11	11,197	5,338	1,531	668	215	60	34	3	249	63
Santouk	73	1	489	0	18,383	9,104	1,325	561	465	218	81	22	546	240
Staung	98	3	581	2	23,930	11,892	1,616	751	406	160	51	14	457	174
Stung Sen	66	0	554	0	20,613	9,802	1,177	487	730	385	155	48	885	433
Whole Province	599	15	4,117	23	160,168	78,035	12,410	5,462	3,689	1,538	658	144	4,347	1,682
- Urban Area	66	0	554	0	20,613	9,802	1,177	487	730	385	155	48	885	433
- Rural Area	533	15	3,563	23	139,555	68,233	11,233	4,975	2,959	1,153	503	96	3,462	1,249

12.2 Characteristics of Schools and School Principals for 2007/2008 by Commune

Commune	Number of Schools				2 - Shift	Floating	Schools	Attached	Schools Without			Characteristics of School Principals (Incharge)			
	Pre-Sch	Primary	College	Lycee	Schools	Schools	in Pagoda	Pre-Sch	Water Sup.	Latrine	Avg. Age	Avg. Service	U.Sec+ Ed.	Female	
Chheu Teal	2	6	1	0	6	0	0	2	2	3	48.0	22.9	1	0	
Dang Kambet	0	5	1	0	3	0	0	0	4	5	34.5	18.0	3	1	
Klaeng	0	4	1	0	0	0	0	0	2	1	47.5	25.0	0	0	
Mean Rith	0	7	0	0	6	0	0	0	5	5	36.2	11.0	4	0	
Mean Chey	0	4	1	0	4	0	0	0	1		38.9	19.2	0	0	
Ngan	0	6	1	0	5	0	0	0	1	1	47.3	22.7	0	0	
Sandan	1	8	0	1	6	0	0	1	4	5	43.2	17.6	4	1	
Sochet	0	3	0	0	3	0	0	0	2	3	26.6	4.0	0	0	
Tum Ring	1	4	1	0	3	0	0	1	2	2	39.3	17.8	2	0	

³ All the data for section 12 comes from the Ministry of Education, Youth and Sport (MoEYS)

12.3 Enrolment by Level of Education, 2006/2007 by Commune

Commune	School	Pre school		Primary School		Lower Secondary School		Upper Secondary School		Enrolment	
		Total	Female	Total	Female	Total	Female	Total	Female	Total	Female
Chheu Teal	8	100	50	1530	695	343	176	0	0	1973	921
Dang Kambet	6	0	0	589	287	49	27	0	0	638	314
Klaeng	6	0	0	456	245	99	51	0	0	555	296
Mean Rith	6	0	0	860	433	0	0	0	0	860	433
Mean Chey	5	0	0	1384	677	309	148	0	0	1693	825
Ngan	7	0	0	1365	670	148	70	0	0	1513	740
Sandan	10	90	36	1679	775	510	249	318	118	2597	1178
Sochet	3	0	0	423	163	0	0	0	0	423	163
Tum Ring	6	40	17	725	352	32	15	0	0	797	384

12.4 Enrolment by Level of Education, 2007/2008 by Commune

Commune	School	Pre school		Primary School		Lower Secondary School		Upper Secondary School		Enrolment	
		Total	Female	Total	Female	Total	Female	Total	Female	Total	Female
Chheu Teal	9	90	41	1598	738	379	170	0		2067	949
Dang Kambet	6	0	0	537	245	46	23	0		583	268
Klaeng	5	0	0	418	235	115	59	0		533	294
Mean Rith	7	0	0	957	465	0	0	0		957	465
Mean Chey	5	0	0	1409	704	330	155	0		1739	859
Ngan	7	0	0	1328	675	138	53	0		1466	728
Sandan	10	100	51	1696	795	531	249	357	136	2684	1231
Sochet	3	0	0	354	146	0	0	0		354	146
Tum Ring	6	30	8	724	365	60	25	0		814	398

12.5 Aspects of Enrolment for 2007/2008 by Commune

Commune	% Repeaters (Total)			% Over-age Enrollment (Total)			% Repeaters (Girl)			% Over-age Enrollment (Girl)		
	Primary	L.Sec.	U.Sec.	Primary	L.Sec.	U.Sec.	Primary	L.Sec.	U.Sec.	Primary	L.Sec.	U.Sec.
Chheu Teal	10.7	0.3	0.0	27.6	63.3	0.0	6.5	0.0	0.0	26.3	58.8	0.0
Dang Kambet	26.6	2.2	0.0	21.6	37.0	0.0	27.3	0.0	0.0	21.2	43.5	0.0
Klaeng	20.6	0.0	0.0	30.1	60.0	0.0	17.9	0.0	0.0	31.1	55.9	0.0
Mean Rith	13.4	0.0	0.0	16.7	0.0	0.0	13.3	0.0	0.0	15.5	0.0	0.0
Mean Chey	21.6	0.0	0.0	18.5	83.3	0.0	18.8	0.0	0.0	18.9	81.9	0.0
Ngan	21.8	0.0	0.0	24.5	60.1	0.0	20.7	0.0	0.0	23.9	69.8	0.0
Sandan	15.9	0.0	3.4	17.3	68.4	58.3	15.2	0.0	2.2	17.1	62.2	50.0
Sochet	13.6	0.0	0.0	5.1	0.0	0.0	11.6	0.0	0.0	5.5	0.0	0.0
Tum Ring	10.9	0.0	0.0	29.7	68.3	0.0	9.9	0.0	0.0	32.3	68.0	0.0

12.6 School Buildings for all schools in the District for 2007/2008, by Commune

Commune	Total Number of		Concrete/Brick Structure		Wooden Structure		Bamboo Structure		New Buildings		Buildings Without Good		
	Buildings	Rooms	Buildings	Rooms	Buildings	Rooms	Buildings	Rooms	Repaired	Constructed	Floor	Roof	Wall
Chheu Teal	12	52	9	45	2	5	1	2	0	3	2	2	4
Dang Kambet	6	14	1	6	5	8	0	0	2	1	2	1	4
Klaeng	7	26	6	25	1	1	0	0	0	2	3	0	0
Mean Rith	8	20	2	6	5	13	1	1	0	4	1	1	2
Mean Chey	12	42	10	36	2	6	0	0	0	1	0	0	0
Ngan	9	31	8	30	1	1	0	0	0	3	1	0	0
Sandan	18	70	12	59	6	11	0	0	2	4	5	2	5
Sochet	3	4	0	0	3	4	0	0	0	0	3	3	3
Tum Ring	6	25	4	19	2	6	0	0	0	1	0	1	1

12.7 Conditions of Classrooms and Existence of Separate School Office and Library, by Commune

Commune	Number of Class rooms	Number of Classrooms			Classrooms Without Good			Number of Furniture needed				Schools with Separate	
		in Pagoda	New Repaired	New Constr.	Floor	Roof	Wall	Desks	Chairs	Black-board	Teacher Table	Office	Library
Chheu Teal	39	0	0	9	6	6	12	0	0	0	2	4	2
Dang Kambet	10	5	4	2	2	1	6	1	0	0	0	0	0
Klaeng	18	4	0	7	11	0	0	0	0	0	0	2	1
Mean Rith	17	0	0	10	2	1	2	117	75	6	11	1	0
Mean Chey	31	0	0	3	0	0	0	0	0	0	0	3	2
Ngan	29	0	0	12	3	0	0	0	0	0	0	3	2
Sandan	45	0	6	24	6	3	6	26	12	2	3	2	2
Sochet	4	2	0	0	4	4	4	5	5	0	1	0	0
Tum Ring	17	0	0	3	0	3	3	1	1	0	0	1	1

12.8 Community Participation and Financing across all schools in the District for 2007/2008 by Commune

Commune	Parent Association				Commu. Teachers	Teaching Monks	PAP Fund (Riel)		Number of Schools Obtaining Funds from				
	Exists	Held Meet	Total	Female			per Student	per School	Sch. Income	Community	Gvt. For building	Abroad	IOs/NGOs
Chheu Teal	9	9	7	2	0	0	9,385	2,197,188	0	1	1	1	1
Dang Kambet	6	6	4	1	0	0	136,436	14,507,667	0	0	0	0	0
Klaeng	5	5	6	1	0	0	13,178	1,439,060	0	0	0	0	0
Mean Rith	6	6	5	1	0	0	13,838	1,466,833	0	1	0	0	0
Mean Chey	5	5	5	1	0	0	11,657	3,809,000	0	0	1	0	1
Ngan	7	7	5	1	0	0	11,156	2,411,357	1	0	2	1	0
Sandan	9	9	6	1	0	0	12,072	3,362,722	0	1	0	0	0
Sochet	3	3	5	2	0	0	4,455	628,100	0	0	0	0	0
Tum Ring	4	4	5	1	0	0	9,581	2,448,000	0	0	0	0	0

12.9 Percentage Student Flow Rates and Graduation by level 2006/2007, by Commune

Commune	Primary Level (Grades 1-6)			Lower Secondary Level (Grades 7-9)			Upper Secondary Level (Grades 10-12)			Successful Candidates		
	Promotion	Repetition	Dropout	Promotion	Repetition	Dropout	Promotion	Repetition	Dropout	Grade 6	Grade 9	Grade 12
Chheu Teal	87.0	11.2	1.8	76.1	0.3	23.6	0.0	0.0	0.0	178	59	0
Dang Kambet	52.0	24.3	23.8	57.1	2.0	40.8	0.0	0.0	0.0	22	0	0
Klaeng	70.7	19.2	10.1	71.7	0.0	28.3	0.0	0.0	0.0	48	0	0
Mean Rith	74.9	14.9	10.2	0.0	0.0	0.0	0.0	0.0	0.0	28	0	0
Mean Chey	75.9	22.0	2.1	79.9	0.0	20.1	0.0	0.0	0.0	140	48	0
Ngan	68.8	21.2	10.0	70.9	0.0	29.1	0.0	0.0	0.0	87	22	0
Sandan	76.2	16.0	7.8	80.4	0.0	19.6	60.1	3.8	36.2	161	75	31
Sochet	50.4	11.3	38.3	0.0	0.0	0.0	0.0	0.0	0.0	13	0	0
Tum Ring	67.6	10.9	21.5	71.9	0.0	28.1	0.0	0.0	0.0	32	0	0

13 Staff and Resources at the District

This chapter presents data from the District Information System, collected around the middle of 2009 unless otherwise specified.

13.1 District Councilors elected in 2009

Name	Sex	Year of Birth	Function	Phone
ប៊ែន និន	M	1952	Chairperson of The Council	012-257 048
អ៊ុច ប៊ុនហ៊ី	M	1951	Councillor	092-762 493
គៀក ហុក	M	1944	Councillor	011-616 057
ជឹម គន្ធា	F	1951	Councillor	092-845 279
ពៅ សំងធី	M	1949	Councillor	092-845 279
គង់ សុខា	M	1956	Councillor	099-453 040
សូ យ៉ាន	M	1940	Councillor	
ពេជ ហេង	M	1951	Councillor	099-457 476
ម៉ៅ ហ៊ាង	F	1946	Councillor	092-749 187
ឡាយ ថូ	M	1955	Councillor	099-453 115
ពិន រ៉ាន់	M	1982	Councillor	
សុក សុកឃី	M	1949	Councillor	099-458 364
ជន់ ជន	M	1937	Councillor	
យូ ប៊ុនជន	M	1972	Councillor	089-727 789
សៅ តក់	M	1975	Councillor	016-610 961

13.2 Committees of the Council

Please note at the time of producing the district data books the composition of the committees was not known for all district councils and therefore data were not available for 13.2.1, 13.2.2, 13.2.3.

13.2.1 Technical Facilitation Committee

13.2.2 Women's and Children's Affairs Committee

13.2.3 Procurement Committee

13.3 Board of Governors

Name	Sex	DoB	Function	Salary Level	Body	Phone
ស៊ីម វណ្ណា	M	1953	District Governor	១១-២	Medium Civil Servant	011-505 659
ទ្រុត ម៉ូរី	M	1956	District Deputy Governor	១១-៤	Medium Civil Servant	012-624 410
ហុង សុខស៊ីម	F	1953	District Deputy Governor	១២-៤	Medium Civil Servant	092-712 105
ទីវ ហុក	M	1955	District Deputy Governor	១២-១០	Medium Civil Servant	092-985 891

13.4 Offices under Sala Krong, Sala Srok and Sala Khan

Office Name	Chief		Deputy Chief		No. of Staff				Office Area (m2)	No of vehicle (public or program)	
					State		Contract			vehicle	moto
	M	F	M	F	M	F	M	F			
Adminnistration Office	0	1	1	0	10	10	0	0	10.45	0	0
Economy Office	1	0	1	0	0	1	0	0	14.45	0	1
Social Affair Office	0	0	1	0	2	0	0	0	14.45	0	1

13.5 Municipality/District/Khan line offices

Office Name	Chief		Deputy Chief		No. of Staff				Office Area (m2)	No of vehicle (public or program)	
					State		Contract				
	M	F	M	F	M	F	M	F		vehicle	moto
District/ Khan Police Headquarter	1	0	4	0	101	2	1	0	180	0	13
District/ Khan Military Police Headquarter	1	0	9	0	7	0	0	0	75	0	0
District/ Khan Military Subregion	1	0	2	0	12	1	0	0	230	0	0
Planning Office	1	0	0	1	0	0	0	0	Rent	0	0
Rural Development Office	1	0	1	0	0	0	0	0	30	0	2
Women Affairs Office	0	1	0	0	0	0	0	1	20	0	1
Environment Office	1	0	2	0	1	0	1	0	20	0	0
Education Office	1	0	2	0	8	2	0	0	139	0	2
Agriculture Office	1	0	2	0	4	2	0	1	80	0	7
Social Affairs Office	1	0	1	0	1	0	0	1	63	0	0
Culture Office	1	0	1	0	0	0	0	0	Borrow	0	0
Cult and Religion Office	1	0	0	0	0	0	0	0	Borrow	0	0
Information Office	1	0	0	1	1	0	0	0	Borrow	0	0
Public Work Office	1	0	0	1	4	0	0	0	Borrow	0	0
Post Office	1	0	1	0	1	0	0	0	24	0	0
Lan Management Office	1	0	1	0	4	0	0	0	Borrow	0	0
Industry Office	1	0	0	0	0	0	0	0	21	0	0

13.6 Properties and Equipment of District Administration

13.6.1 Buildings

Description	Unit	Number	Remark
Office building type			
- Concrete	building	1	
- Wood	building	0	
- Mixed	building	0	
Total floor space	m2		
- Concrete	m2	178.76	
- Wood	m2	0	
- Mixed	m2	0	
Building condition			
- Concrete	%	95	
- Wood	%	0	
- Mixed	%	0	
Office reserved land area	m2	0	
Total office land area	m2	3,200	

13.6.2 Means of Transport available at the District Administration

Description	Unit	Number	Remark
Vehicle (type, size and condition)	Vehicle	0	
Motorcycle (type, size and condition)	Motor	3	

13.6.3 Equipment in District Offices

Description	Unit	Number	Remark
Generator	per set	0	
Photocopy machine at the office	per set	0	
Private photocopy machine at the district town	place	2	
Telephone network (mobile line service)	network	4	
Telephone network (land line service)	network	0	
Fax (include Fax number)	per set	0	
Computer	per set	1	
Printer	per set	1	
Scanner	Per set	0	
Number of computers those can access Internet and email services in the municipality/ district/khan office (including the technical line offices (please provide the email address)	set	0	
Typewriters (including the technical line offices)	per set	4	
Staff of Municipality/district/khan office can use computer	person	1	

13.6.4 Equipment and facilities at the District Town

Description	Unit	Number	Remark
Availability of electricity at noon	Nr Hours	12	
Private internet and email services in the municipality/ district/khan town.	place	0	

13.7 Registered Revenue of the District Administration in 2008⁴

Sources of Revenue	Revenue Collecting Agency	Estimated annual revenue (In Riels)
Taxes	District/ Khan Taxation Unit	23,174,000

13.8 Services in the District**13.8.1 Public Sector Services**

Type of Infrastructure/services	Unit	Number	
		Public	Private
Schools			
Pre-school	room	5	0
Primary School	room	240	0
Secondary school	room	56	0
High School	room	34	0
University	room		
Health			
Health post	place		
Health center	place	3	0
Referral Hospital	bed		

13.9 Civil Society Organizations active in the District**13.9.1 NGOs, Associations, Programs and Projects**

Name	Abbr.	Sector Activities	No. of Target Communes	No. of Target Villages	Office in District
NA	NA	ធនធានធម្មជាតិ	9	80	Yes
CODEC	CODEC	កសិកម្ម សុខភាព ឥរិយាបថ	4	19	Yes
NA	NA	សេដ្ឋកិច្ច សង្គមកិច្ច កសិកម្ម	3	27	Yes

13.9.2 Political Parties active in the Municipality, District and Khan

Name	Abbr.	Office in District
Cambodian People Party	CPP	Yes
FUNCINPEC Party	FUNCINPEC	Yes
Human Rights Party	HRP	Yes
SAM RAINSY Party	Sam Rainsy Party	Yes

⁴ Please note that the data in this table are at best estimates. If the table appears blank it does not mean there is no revenue, just that the data have not been recorded/entered.

13.10 Private Sector Organizations

13.10.1 Registered Companies in 2008, by District

On private sector at commune and/or district level	KPT	Baray	Kampong Svay	Stoeung Saen	Prasat Balangk	Prasat Sambour	Sandan	Santuk	Stoung
Businesses and Companies									
Number of registered agricultural enterprises (except family farms)	65	20	6	9	3	8	0	10	9
Number of registered shops, restaurants, transporters and other services	9,818	2,495	1,128	693	867	2,256	756	740	883
Number of manufacturing companies	n/a	n/a	n/a	n/a	n/a	n/a	n/a	n/a	n/a
Number of registered forestry enterprises	n/a	n/a	n/a	n/a	n/a	n/a	n/a	n/a	n/a
Number of registered mining companies	-	n/a	n/a	n/a	n/a	n/a	n/a	n/a	n/a
Number of financial institutions	39	14	1	7	3	4	1	2	7
Number of other commercial institutions	84	15	4	54	0	0	2	6	3
Estimated number of informal enterprises (not registered)	n/a	n/a	n/a	n/a	n/a	n/a	n/a	n/a	n/a
Employment									
Number of people employed in 2008 by companies or any other enterprises	2,516	198	204	957	65	32	523	376	161
Investment									
Amount invested in 2008 by private sector (\$)	n/a	n/a	n/a	n/a	n/a	n/a	n/a	n/a	n/a
Markets									
Number of markets, operating at least weekly	50	12	7	6	3	8	3	4	7

Note: These data are not comprehensive as different companies and business are registered with different departments and not all departments were able or willing to provide detailed information. The number of informal enterprises reflects a rough estimate, made at provincial level and could not be verified.

Source: Unofficially collected at Provincial Level

13.10.2 Farmers in 2008, by District

Credit	KPT	Baray	Kampong Svay	Stoeung Saen	Prasat Balangk	Prasat Sambour	Sandan	Santuk	Stoung
Volume of credit provided to farmers in 2008 (This data is only from Agricultural extension office , PDA) (\$)	3,659	0	1,044,300	9,570,000	0	0	2,550,000	1,470,000	0
Number of farmers receiving credit in 2008	418	0	114	206	0	0	51	47	0
Volume of credit provided to companies in 2008 (\$)	n/a	n/a	n/a	n/a	n/a	n/a	n/a	n/a	n/a

Note: Please note that these data are not necessarily complete or correct. The data are derived from government agencies at provincial and district level which used different recording systems, did not always have complete data or were, sometimes, less than willing to share their data.

Source: Unofficially collected at Provincial Level

SECTION E: POVERTY DATA

14 Data on Poverty

14.1 Predicted Poverty Rates for 2009, by commune

The **Predicted Family Poverty Rate** is based on a statistical model (robust multilevel mixed effect regression) at village level developed by the NCDD M&E Unit and uses CDB data for making an estimate of the predicted poverty rate (this is: *the portion of total families in the district or commune who are expected to be poor*) for the following year using current year data.

The basis for this predicted poverty rate also uses IDPoor (a project of the Ministry of Planning with technical assistance provided by GTZ) data

Commune	2004	2009
Chheu Teal	36.20%	33.30%
Dang Kambet	49.70%	43.90%
Klaeng	39.50%	32.20%
Mean Rith	49.40%	39.50%
Mean Chey	39.70%	33.50%
Ngan	44.90%	42%
Sandan	41.50%	36.60%
Sochet	51.80%	47.50%
Tum Ring	43.50%	36.30%

14.2 Poverty data from survey

14.2.1 Identification of Poor Households Program (IDPoor)

The Ministry of Planning IDPoor Program has developed standardized Procedures for Identification of Poor Households in rural areas. These Procedures are implemented using a participatory and consultative process by sub-national government structures and community representatives.

The IDPoor Program is managed by the Ministry of Planning (MOP), in cooperation with the Ministry of Interior's Department of Local Administration (DOLA). The program is supported by the Federal Republic of Germany, with technical assistance provided by German Technical Cooperation (GTZ). In 2009, AusAID also provided funding support to the Program.

Objective

The IDPoor Program aims to implement the Procedures for Identification of Poor Households in rural areas as widely as possible, in order to provide data on the level of poverty of areas and households that can be used by a large range of institutions and organizations for targeting services and development assistance to poor areas and poor households.

Coverage: During 2007, 2008 and 2009 the IDPoor Procedures have been implemented in 18 provinces (with partial or complete coverage), covering a total of around 7000 rural villages. The MOP and a number of NGO partners who are Health Equity Fund Operators have collaborated in collecting this data from different areas.

Categorization: Identified poor households are classified under two poverty categories: Poor Level 1 (very poor), and Poor Level 2 (poor). Households are classified based on data

collected using a standard questionnaire, together with consideration by villagers of these households' special circumstances.

Further information: Please go to the IDPoor Program webpage at www.mop.gov.kh/Projects/IDPoor/tabid/154/Default.aspx

This District has not yet been covered by IDPoor